



BUCKEYE CLASSIC GUERNSEY SALE
APRIL 1, 2026 | COLUMBUS, OH



Joyce!

All-American Four-Year-Old 2021
 All-American Jr. Two-Year-Old 2019
 Reserve All-American Aged Cow 2023 & 2025
 Member, All-American Best Three Females '19 & '21
 Member, All-American Exhibitor's Herd 2019
 Grand Champion NGS-Louisville 2025
 Reserve Grand Champion NGS-Louisville 2023
 Total Performance Cow NGS-Louisville 2023 & 2025
 Total Performance Cow NGS-Madison 2021
 Grand Champion Guernsey Gold Showcase 2021
 Class-leading records for Milk & Protein
 Dam of JIGSAW at Semex

Springhill Mentor Joyce EX-95

178,740M 4.2% 7,432F 3.3% 5,818P Lifetime
 Dam of Lot 1; Maternal Family of Lot 2

LOT 1 SPRINGHILL AP JULIENNE-ETV 840003280202299 A2A2

Born: 03-10-2024 Tag # 1127
 Consignor: SPRINGHILL
 BIG PRAIRIE OH

Bred 7/26/25 Due 5/8/26 to:
 Unos JD Unanimous-ETV 840003253913909 6GU139 A2A2

12/25 USDA GPTA +242M -0.24% -30F -0.04% +1P
 -1.5DPR +3.6PL -50NM\$ 28NM%ile -55CM\$ 60% Rel
 2.82SCS-3.40HCR 36% Rel -2.50CCR 42% Rel
 0.90LIV 38% Rel 0.80GL 43% Rel -5.50EFC 39% Rel
 0 App 12/25 PTAT +0.9 +1.3UDR +1.0FLC 62%Rel CPI -2

IDLE GOLD E CHALLENGE-ET USA000000604268 1GU418 A2A2

INDIAN ACRES MM PISTACHIO PIE USA000003076310

Appraisal: 94 @ 5-00 (95/90)
 4-10 365D 2X 26187M 5.1% 1330F 3.6% 939P 99

INDIAN ACRES AMERICAN PIE USA000068016348 31GU618 A2A2

12/25 USDA GPTA +31M -0.18% -29F -0.04% -6P
 -2.1DPR +2.8PL -107NM\$ 25NM%ile -112CM\$ 98% Rel
 2.78SCS -3.30HCR 72% Rel -2.70CCR 92% Rel
 0.00LIV 77% Rel 0.80GL 98% Rel -6.90EFC 81% Rel
 AGA 12/25 PTAT -0.3 +0.0UDC +0.6FLC 98%Rel PTI -36

MAR RAL ROYAL MENTOR USA000000604702 31GU612 A2A2

SPRINGHILL DOUBLE JELLYBEAN USA000068034307 A1A2

Appraisal: + 80 @ 3-05 (++)G+G)
 2-02 280D 2X 18840M 5.5% 1036F 3.3% 626P 95

SPRINGHILL MENTOR JOYCE 840003141692353 A2A2

12/25 USDA GPTA +680M -0.12% +11F -0.07% +11P
 -0.6DPR -0.1PL +37NM\$ 46NM%ile +25CM\$ 71% Rel
 2.98SCS-2.60HCR 34% Rel -1.40CCR 44% Rel
 0.30LIV 37% Rel 0.20GL 45% Rel -2.40EFC 37% Rel
 5 Rec YDev: +2263M +57F +48P
 7 App 12/25 PTAT +1.7 +1.1UDR +1.0FLC 74%Rel CPI +42

3D: SPRINGHILL BLUE JUDITH-ET USA000068032723

Appraisal: 93 @ 4-06 (92/93)
 4-05 361D 2X 28170M 5.1% 1448F 3.3% 925P 96
Nominated All-American Jr. Three-Year-Old 2016
Reserve Grand Champion Ohio State Fair 2016
 Dtr: SPRINGHILL DRONE JULIETH-ETV 90 @ 3-06 (89/91)
 2-11 355D 2X 26410M 4.4% 1175F 3.2% 832P DHIA

Appraisal: EX 95 @ 6-01 (EEEEEE)

2-00 330D 2X 17860M 4.2% 757F 3.2% 580P 93
 3-00 298D 2X 24250M 4.4% 1078F 3.2% 780P 96
 3-11 365D 2X 35810M 4.1% 1459F 3.2% 1133P DHIA
 5-09 365D 2X 42740M*3.8% 1638F 3.3% 1404P* DHIA
 7-02 365D 2X 44580M*4.3% 1897F 3.2% 1422P* DHIA
 1913D 178740M 4.2% 7432F 3.3% 5818P LIFE

4D: DIX LEE TILLER JOKE USA000068001932

Appraisal: 93 @ 5-08 (93/92)
 5-06 365D 2X 31350M 4.9% 1543F 3.3% 1033P DHIA
Dam of Jester, Judgment, Jackpot, Lone Star, Jaguar
All-American Jr. 2-Year-Old 2006
Reserve All-American 5-Year-Old 2009
 15 Excellent Daughters

Dtrs: SPRINGHILL YB JEWELER-ETV 90 @ 3-05 (85/91)

2-03 305D 2X 20000M 4.0% 802F 3.5% 698P 96
 SPRINGHILL DRONE JOYOUS-ETV 89 @ 2-10 (88/90)
 2-02 305D 2X 21430M 3.7% 790F 3.2% 689P DHIA
Nominated All-American Sr. Two-Year-Old 2025



Springhill V Jangles-ETV

1st Summer Yearling Ohio State Fair 2024
Sells as Lot 2
Maternal Family of Lot 1



Springhill Double Jazmin-ET EX-92

102,290M 6.2% 6,334F 3.8% 3,847P Life
HM Jr. All-American 2012 & 2013
Dam of Lot 2; Maternal Sister to 3rd Dam of Lot 1

LOT 2 SPRINGHILL V JANGLES-ETV 840003265818602 A1A2

Born: 06-26-2023 Tag # 1066
Consignor: SPRENG VALERIE & JIM + ACK-LEE FARMS
BUCYRUS OH

DHI Herd # 31469130 Cow Control 001066
12/25 USDA GPTA +336M +0.15% +41F -0.01% +9P
-1.4DPR -2.3PL +133NM\$ 68NM%ile +132CM\$ 68% Rel
2.99SCS-2.30HCR 32% Rel -2.40CCR 38% Rel
-2.20LIV 33% Rel 2.10GL 44% Rel 0.00EFC 32% Rel
1 Rec YDev: +2528M +117F +57P
1 App 12/25 PTAT +0.4 +0.6UDR +0.6FLC 70%Rel CPI +42
Appraisal: +81 @ 2-02 (++)GVG)
2-00 305D 2X 15673M 5.4% 855F 3.6% 568P Proj. Act.

MARODORE RANDALLS VENGEANCE USA000097006605 6GU113 A2A2

12/25 USDA GPTA +504M +0.00% +24F -0.05% +9P
-0.9DPR -3.0PL -38NM\$ 35NM%ile -48CM\$ 89% Rel
3.08SCS -1.70HCR 47% Rel -1.70CCR 59% Rel
-2.80LIV 36% Rel 2.40GL 95% Rel 1.00EFC 42% Rel
AGA 12/25 PTAT +0.1 +0.4UDC +0.9FLC 88%Rel PTI +29

SPRINGHILL DOUBLE JAZMIN-ET USA000068031518

12/25 USDA GPTA +28M +0.22% +39F +0.00% +1P
-0.4DPR -0.2PL +263NM\$ 88NM%ile +266CM\$ 80% Rel
2.88SCS-1.90HCR 40% Rel -1.00CCR 54% Rel
0.50LIV 44% Rel 1.50GL 53% Rel -0.50EFC 44% Rel
4 Rec YDev: +491M +91F +15P
5 App 12/25 PTAT +0.4 +1.2UDR +0.6FLC 81%Rel CPI +52
Appraisal: 92 @ 5-03 (91/91)
1-08 349D 2X 19490M 5.4% 1047F 3.5% 685P 101
2-08 365D 2X 21090M 6.5% 1373F 3.5% 732P DHIA
3-11 361D 2X 26290M 5.1% 1329F 4.0% 1047P 96
5-00 365D 2X 28270M 7.3% 2060F*3.8% 1073P DHIA
1628D 102290M 6.2% 6334F 3.8% 3847P LIFE

Honorable Mention Junior All-American Yearling in Milk 2013

Honorable Mention Junior All-American Winter Calf 2012

Dtrs: SPRINGHILL LAREDO JAZLYNN-ET 91 @ 6-00 (92/92)

Gold Star Dam - 2022

3-07 365D 2X 25770M 5.5% 1421F 3.6% 920P DHIA
SPRINGHILL GOTCHA JOLEE 88 @ 6-08 (90/78)
SPRINGHILL MM JORDAN-ETV 91 @ 4-08 (91/90)
4-03 365D 2X 26480M 4.8% 1270F 3.7% 986P DHIA
SPRINGHILL LATIMER JUMANJI-ET 87 @ 5-03 (91/78)
5-10 333D 2X 21350M 5.6% 1195F 3.8% 805P 93
SPRINGHILL RO LEVI JAYLA-ETV 91 @ 3-09 (89/91)
3-03 362D 2X 22220M 4.6% 1019F 3.6% 795P 97

Last fresh 7/23/25 (1st lactation)
Confirmed Pregnant - service information to be announced

1st Summer Yearling Ohio State Fair 2024
2nd Summer Yearling Spring Dairy Expo 2024

DAIRYMAN COPPER RANDALL-ET 840003009973866 7GU471 A2A2

MARODORE BOOMERS VALIUM USA000068032668 A2A2

Appraisal: EX 94 @ 7-09 (EEEEEE)
3-09 365D 2X 24540M 5.6% 1382F 3.6% 883P DHIA

PINE RIDGE DOUBLE L-ET USA000000604312 200GU109 A1A2

DIX LEE TILLER JOKE USA000068001932

Appraisal: 93 @ 5-08 (93/92)
2-00 365D 2X 24167M 4.8% 1158F 3.3% 794P 92
5-06 365D 2X 31350M 4.9% 1543F 3.3% 1033P DHIA
Dam of Jester, Judgment, Jackpot, Lone Star, Jaguar
All-American Jr. Two-Year-Old 2006
Reserve All-American Five-Year-Old 2009
15 Excellent Daughters

3D: DIX LEE JIFFY JIPSY USA000003066162

Appraisal: 90 @ 5-01 (88/90)
4-08 365D 2X 25080M 4.6% 1142F 3.4% 852P DHIA

4D: DIX LEE SMOKEY BEAR JIGGER USA000003036554

Appraisal: 84 @ 4-06

5D: DIX LEE BRETT'S BIONIC JINGLE USA000003004382

Appraisal: 86 @ 5-06

6D: DIX LEE FAYETTE JINGO USA000002984299

Appraisal: 90 @ 3-11



Knapps Spider Bank On Me-ET EX-94
111,140M 5.6% 6,190F 3.7% 4,058P Life
Dam of Lot 3

Bank on Me!

Reserve All-American Aged Cow 2021
Reserve All-American Four-Year-Old 2019
Reserve All-American Jr. Two-Year-Old 2017
HM Junior All-American Spring Yearling 2016
Nominated All-American Spring Yearling 2016
Member, AA Best 3 Females & Exhibitor's Herd 2017



Knapps Missile Blaster-ETV GP-84
Res. All-American Yearling in Milk 2025
Full Sister to Lot 3

LOT 3 REDCARPET MISSILES AWAY-ETV 840003321833760

Born: 12-03-2025 Tag #5502
Consignor: RED CARPET GUERNSEYS
KIRKLAND IL

PA: -409M +0.10% -2F +0.06% -6P -73CM\$ -81NM\$
+0.7PTAT +1.4UDC +0.0FLC -0.1DPR +0.3PL +9CPI 3.10SCS

VALLEY GEM MISSILE-ETV 840003208696258 200GU125 A2A2

12/25 USDA GPTA -1025M +0.16% -21F +0.09% -21P
+0.7DPR +0.0PL -223NM\$ 0NM%ile -212CM\$ 70% Rel
3.15SCS -2.90HCR 37% Rel -0.50CCR 40% Rel
2.60LIV 40% Rel -0.10GL 39% Rel -4.10EFC 36% Rel
AGA 12/25 PTAT +0.7 +1.3UDC +0.3FLC 65%Rel PTI -21

KNAPPS SPIDER BANK ON ME-ET USA000097000091

12/25 USDA GPTA +207M +0.04% +17F +0.02% +10P
-0.8DPR +0.5PL +62NM\$ 52NM%ile +67CM\$ 75% Rel
3.05SCS-0.90HCR 35% Rel -0.40CCR 48% Rel
-1.00LIV 37% Rel 0.50GL 46% Rel 4.10EFC 37% Rel
4 Rec YDev: +498M +44F +23P
2 App 12/25 PTAT +0.7 +1.4UDR -0.3FLC 77%Rel CPI +38
Appraisal: EX 94 @ 6-01 (EEEEVE)
1-11 365D 2X 19560M 5.3% 1040F 3.6% 700P DHIA
3-07 365D 2X 27770M 5.4% 1493F 3.4% 958P DHIA
5-05 305D 2X 28590M 5.3% 1525F 3.4% 964P 96
6-06 250D 2X 16960M 6.5% 1110F 4.0% 675P 94
1811D 111140M 5.6% 6190F 3.7% 4058P LIFE
Dtrs: KNAPPS COPPER BANK ON IT 90 @ 5-04 (91/86)
4-08 365D 2X 28160M 5.2% 1474F 3.7% 1030P DHIA
Nominated All-American Jr. Two-Year-Old 2019
KNAPPS TG ROBBING THE BANK 85 @ 3-08 (84/84)
2-07 365D 2X 24620M 4.6% 1127F 3.4% 834P DHIA
Nominated All-American Winter Calf 2019
KNAPPS AP BANK ROLL-ETV 91 @ 4-11 (90/91)
Honorable Mention All-American Spring Yearling 2022
KNAPPS ACC DRONE BLAST-ETV 90 @ 3-08 (88/90)
3-00 305D 2X 19030M 4.7% 903F 3.4% 645P 98
Reserve All-American Jr. Two-Year-Old 2023
KNAPPS GOLIATH BANNER-ETV 86 @ 2-04 (86/82)
KNAPPS COPPER BELOIT-ETV 85 @ 2-11 (85/82)
KNAPPS CS BREAK THE BANK-ETV 85 @ 3-00 (86/77)
2-00 305D 2X 17500M 3.9% 682F 2.9% 512P 97
KNAPPS MISSILE BLASTER-ETV 84 @ 2-05 (85/79)
Reserve All-American Yearling in Milk 2025

MAR RAL ROYAL MENTOR USA000000604702 31GU612 A2A2

VALLEY GEM ATLAS MALT-ET USA000078005539 A2A2

Appraisal: EX 97 @ 8-08 (EEEEEE)
4-02 305D 2X 26750M 5.5% 1482F 3.3% 889P 96

COULEE CREST LUXURY SPIDER-ET USA000000604229 1GU415

KNAPPS MR AMERICA MISS BESTANY USA000068026893

Appraisal: 92 @ 6-07 (92/89)
2-02 365D 2X 18700M 5.0% 938F 3.2% 604P DHIA
3-10 365D 2X 23410M 5.5% 1297F 3.2% 748P DHIA
5-10 365D 2X 24700M 5.8% 1438F 3.3% 817P DHIA
2164D 120810M 5.8% 7034F 3.6% 4349P LIFE
Junior All-American & Nom. All-American Sr. Two-Year-Old 2011

3D: KNAPPS ACE MISS BEST USA000068006305

Appraisal: 92 @ 5-08 (91/91)
6-02 365D 2X 24730M 5.4% 1330F 3.2% 799P DHIA
1837D 102260M 5.5% 5650F 3.4% 3430P LIFE
Honorable Mention Junior All-American Aged Cow 2011
Nominated Junior All-American Sr. Two-Year-Old 2007
Dtr: KNAPPS REGIS BLESSING 92 @ 5-07 (92/88)
5-02 365D 2X 24940M 3.8% 939F 3.2% 800P DHIA
Reserve Junior All-American Five-Year-Old 2015

4D: KNAPPS MISS BEST USA000003060918

Appraisal: 93 @ 5-04 (93/93) Gold Star Dam - 2002
4-06 365D 2X 26870M 5.9% 1585F*3.3% 896P DHIA
1679D 116150M 6.0% 6954F 3.5% 4025P LIFE
Reserve All-American Sr. Three-Year-Old 2001
Honorable Mention All-American Four-Year-Old 2002
Total Performance Cow NGS-Madison 2002



Prestidge!

Dam of 13 of the top 50 PTAT Heifers - Dec. 2025
 HM Junior All-American Five-Year-Old 2021
 Nominated All-American Five-Year-Old 2021
 HM Junior All-American Sr. Three-Year-Old 2019
 Nominated All-American Sr. Three-Year-Old 2019
 Nominated Junior All-American Sr. Two-Year-Old 2018
 Nominated Junior All-American Winter Yearling 2017
 Dam of PRESCOTT at Masterpiece Genetics

Oakland Latimers Prestidge EX-94-2E
 4-02 365D 2X 24,120M 4.5% 1,080F 3.6% 873P
 Dam of Lot 4

LOT 4 RED CARPET WEAVERCREST PEG-ET USA000097019357

Born: 09-05-2025 Tag # 995
 Consignor: WEAVER KYLIE & BRYCE
 GOSHEN IN

A2A2 by parentage

Ranks in Top 5 PTAT Heifers & Top 200 CPI Heifers - Dec. 2025

PA: -247M +0.15% +14F +0.10% +9P -24CM\$ -44NM\$
 +1.8PTAT +2.0UDC +1.8FLC -0.9DPR -0.5PL +62CPI 3.12SCS

GOLDEN I LONDON USA000068039423 54GU481 A2A2

LANG HAVEN LONDON TORPEDO 840003233414503 54GU520 A2A2

12/25 USDA GPTA +88M +0.06% +15F +0.03% +8P
 -0.1DPR -1.4PL -46NM\$ 35NM%ile -41CM\$ 62% Rel
 3.16SCS -0.6SCR 0.30HCR 36% Rel 0.50CCR 38% Rel
 -1.20LIV 30% Rel 1.80GL 43% Rel -3.00EFC 30% Rel
 AGA 12/25 PTAT +1.5 +1.9UDC +1.8FLC 62%Rel PTI +66

LANG HAVEN PILOT TORONTO-TW USA000097003761

Appraisal: EX 91 @ 4-09 (EEVEE)
 4-05 323D 2X 20700M 4.4% 920F 3.5% 730P 96

COULEE CREST FAME LATIMER-ET USA000078001154 76GU810 A2A2

OAKLAND LATIMERS PRESTIDGE 840003131521611 A2A2

12/25 USDA GPTA -582M +0.24% +12F +0.17% +9P
 -1.6DPR +0.4PL -41NM\$ 30NM%ile -6CM\$ 73% Rel
 3.08SCS-2.20HCR 33% Rel -3.00CCR 44% Rel
 -2.60LIV 35% Rel -0.20GL 44% Rel 0.30EFC 36% Rel
 5 Rec YDev: -490M +41F +44P

OAKLAND CRUNCHES PRESTON USA000068046137

Appraisal: 90 @ 5-08 (90/90)
 2-02 314D 2X 14150M 5.4% 763F 3.6% 513P 97
 3-03 287D 2X 13740M 5.6% 766F 3.8% 519P 97
 4-02 347D 2X 16210M 5.6% 914F 3.9% 630P DHIA
 5-03 323D 2X 15730M 5.3% 839F 3.8% 603P 97
 6-04 305D 2X 15530M 5.5% 860F 3.6% 560P 95
 7-04 282D 2X 14890M 5.1% 765F 3.7% 556P 96
 Dtrs: OAKLAND V I PS PARVARTI 85 @ 4-09 (84/86)
 3-02 325D 2X 18860M 5.0% 943F 3.8% 718P 97
 2nd Senior Three-Year-Old NJS-Harrisburg 2017
 OAKLAND LATIMERS PRESCOT 91 @ 6-04 (91/91)
 4-02 365D 2X 18540M 5.6% 1043F 3.9% 725P DHIA

4 App 12/25 PTAT +2.1 +2.0UDR +1.7FLC 77%Rel CPI +54
 Appraisal: EX 94 @ 6-06 (EEVEE) 2E

1-11 362D 2X 14230M 4.9% 691F 3.5% 503P 96
 3-00 364D 2X 20470M 4.7% 958F 3.6% 738P 98
 4-02 365D 2X 24120M 4.5% 1080F 3.6% 873P DHIA
 5-05 349D 2X 21700M 4.7% 1026F 3.8% 825P 97
 Dtrs: SNIDERS LONESTAR PRIZE 88 @ 5-02 (83/90)
 2-05 365D 2X 18250M 4.7% 859F 3.6% 665P DHIA

3D: OAKLAND LEVIS PAISLEY USA000068023498

Appraisal: 92 @ 5-07 (92/92)

4D: OAKLAND TILLERS PALEY USA000068005367

Appraisal: 85 @ 4-09 (85/84)

5D: OAKLAND LOGICS PUNKY USA000003075895

Appraisal: 81 @ 3-11 (82/78)

6D: OAKLAND VALIANTS PERKY USA000003062941

Appraisal: 85 @ 4-02 (82/84)

7D: OAKLAND POKERS PEPPY USA000003052490

Appraisal: 80 @ 4-09

8D: OAKLAND FRANKS PIPPY USA000002997421

Appraisal: 88 @ 4-07

Nominated All-American Four-Year-Old 2023
 SNIDERS MICHEL PEYTON-ETV 85 @ 2-03 (84/85)
 SNIDERS MICHEL PRICELESS-ETV 85 @ 2-09 (86/81)
 1-10 305D 2X 17860M 4.1% 736F 3.3% 587P 96
 SNIDERS MICHELANGELO PARIS-ETV 88 @ 2-09 (90/78)
 1-11 305D 2X 19270M 4.5% 873F 3.5% 678P 96
Res. Intermediate Champion Guernsey Gold Showcase Jr. Show 2025
 GLADHEART-REGAL HILLS PAM-ET 88 @ 2-04 (88/87)
Junior Champion Northeast Spring Show 2025
 GLADHEART REGAL HILLS PRETTY-ET
Nominated All-American 2024 & 2025
 GLADHEART-REGAL HILLS PANINI-ET
 #1 PTAT Heifer December 2025
 GLADHEART RH PRETZEL-ET
 #2(T) PTAT Heifer December 2025



Valley Gem HC Magnolia EX-90

Nominated All-American Jr. Two-Year-Old 2021
Member, HM All-American Dam & Daughter 2021
Dam of Lot 5



Valley Gem Atlas Malt-ET EX-97

102,510M 6.0% 6,111F 3.7% 3,797P Life
Three-Time Unanimous All-American
Granddam of Lot 5

LOT 5 REDCARPET MALT LIQUOR-ETV 840003321833790

Born: 12-01-2025 Tag #5532
Consignor: RED CARPET GUERNSEYS
KIRKLAND IL

PA: -215M +0.13% +12F +0.03% -3P -34CM\$ -38NM\$
+1.3PTAT +1.4UDC +1.2FLC -0.3DPR -0.8PL +35CPI 3.09SCS

LANG HAVEN LONDON TORPEDO 840003233414503 54GU520 A2A2

12/25 USDA GPTA +88M +0.06% +15F +0.03% +8P
-0.1DPR -1.4PL -46NM\$ 35NM%ile -41CM\$ 62% Rel
3.16SCS -0.6SCR 0.30HCR 36% Rel 0.50CCR 38% Rel
-1.20LIV 30% Rel 1.80GL 43% Rel -3.00EFC 30% Rel
AGA 12/25 PTAT +1.5 +1.9UDC +1.8FLC 62%Rel PTI +66

VALLEY GEM HC MAGNOLIA USA000097008745 A2A2

12/25 USDA GPTA -517M +0.20% +9F +0.03% -13P
-0.4DPR -0.2PL -29NM\$ 32NM%ile -26CM\$ 66% Rel
3.01SCS -1.50HCR 25% Rel -0.40CCR 35% Rel
-0.60LIV 27% Rel 1.00GL 33% Rel -1.10EFC 27% Rel
2 Rec YDev: -2519M +7F -74P

4 App 12/25 PTAT +1.0 +0.8UDR +0.5FLC 65%Rel CPI +3
Appraisal: EX 90 @ 4-02 (EEVVE)

2-01 305D 2X 13500M 5.3% 712F 3.2% 433P 96

Nominated All-American Jr. Two-Year-Old 2021

Member, HM All-American Dam & Daughter 2021

Dtrs: MISTY MEADOWS DRONE MACADAMIA 88 @ 3-06 (88/88)

3rd Summer Jr. Two-Year-Old NGS-Louisville 2024

REDCARPET MY MY TOO LATE-ETV

1st Fall Calf Indiana State Fair 2025

3D: MI WIL TILLER MALIBU USA000068000371

Appraisal: 94 @ 8-10 (92/94)

6-01 305D 2X 29780M 4.2% 1265F 2.9% 878P 92
1974D 118240M 4.9% 5747F 3.4% 4022P LIFE

All-American Total Performance Cow 2012

Jr. All-American & Nominated All-American Four-Year-Old 2008

Nominated All-American Aged Cow 2012

Dtrs: MI WIL GRUMPY MANHATTAN-ET 90 @ 3-11 (91/87)

3-10 305D 2X 22730M 4.1% 934F 3.1% 695P 78

MI WIL B MALIBUS MILAN-ET 91 @ 4-07 (90/91)

3-08 305D 2X 23030M 3.4% 779F 3.2% 726P 76

VALLEY GEM PATRIOTS MAURICE-ET 91 @ 5-00 (92/92)

2-07 305D 2X 19570M 5.3% 1034F 3.9% 760P DHIA

4D: LAVON FARMS TURN POINT BARBIE USA000003059448

Appraisal: 86 @ 7-09 (84/84)

A2A2 by parentage

GOLDEN I LONDON USA000068039423 54GU481 A2A2

LANG HAVEN PILOT TORONTO-TW USA000097003761

Appraisal: EX 91 @ 4-09 (EEEEVE)

4-05 323D 2X 20700M 4.4% 920F 3.5% 730P 96

VALLEY GOLD LONESTAR HARD CORE-ETV USA000097004831 A2A2

VALLEY GEM ATLAS MALT-ET USA000078005539 A2A2

Appraisal: EX 97 @ 8-08 (EEEEEE)

3-00 330D 2X 15120M 5.6% 850F 3.6% 546P 97

4-02 305D 2X 26750M 5.5% 1482F 3.3% 889P 96

5-05 311D 2X 17870M 6.1% 1082F 3.8% 681P 94

6-05 305D 2X 19530M 6.1% 1199F 3.7% 726P 96

1660D 102510M 6.0% 6111F 3.7% 3797P LIFE

The Breed's First EX-97 Point Cow!

Supreme Champion NAILE 2020 & 2021

Unanimous All-American Aged Cow 2021

Unanimous All-American Five-Year-Old 2020

Unanimous All-American Four-Year-Old 2019

All-American Aged Cow 2022

All-American Lifetime Production Cow 2023

Reserve All-American Junior Three-Year-Old 2018

Grand Champion NGS-Madison 2019, 2021, 2022

Grand Champion NGS-Louisville 2019, 2020, 2021

Reserve Grand Champion NGS-Madison 2023

Total Performance Cow NGS-Louisville 2020

National Total Performance Cow 2020

Dam of MCDREAMY at GGS & MISSILE at Semex

Dtrs: VALLEY GEM TOP GUN MERLOT 90 @ 4-11 (90/90)

4-07 305D 2X 22560M 4.5% 1026F 3.1% 707P 93

Honorable Mention All-American Four-Year-Old 2025

VALLEY GEM MALTS CARMEL DRIZZLE-ETV 87 @ 3-07 (86/85)

4-04 322D 2X 31530M 5.8% 1830F 3.6% 1120P 97

VALLEY GEM LATIMER MY GIRL-ETV 86 @ 3-08 (84/87)

2-02 305D 2X 19070M 5.4% 1028F 3.4% 647P 79

VALLEY GEM AP MI VADA LOCA-ETV 85 @ 2-06 (85/85)

2-02 305D 2X 17660M 4.8% 847F 3.4% 602P 93

VALLEY GEM APIE MOMENT LIKE THIS-ETV 86 @ 3-08 (88/84)

VALLEY GEM AP MELT YOUR HEART-ETV 87 @ 2-06 (87/88)

Reserve All-American Sr. Two-Year-Old 2025

VALLEY GEM D ITS GONNA BE MAY-ETV 83 @ 2-03 (87/81)

Honorable Mention All-American Jr. Two-Year-Old 2025

VALLEY GEM MILLION DOLLAR BABY-ETV 85 @ 1-11 (85/85)



Misty Meadows Rebel Suite EX-94-3E
 148,650M 4.3% 6,399F 3.2% 4,821P Life
 Unanimous All-American Four-Year-Old 2018
 Dam of Lot 6



Misty Meadows Mentor Suitcase EX-94
 3-07 365D 2X 26,240M 3.7% 970F 3.3% 855P
 Three-Time All-American Nominee
 Maternal Sister to Lot 6

LOT 6 CHOICE OF TORPEDO X SUITE MARCH CALVES

Consignor: CLARK BETH ANNE
 NEW PARIS PA
 717-816-4816
 PA: -221M +0.05% -3F +0.02% -5P -37CM\$ -41NM\$
 +1.7PTAT +1.4UDC +1.2FLC +0.4DPR +0.8PL +29CPI 2.96SCS

LANG HAVEN LONDON TORPEDO 840003233414503 54GU520 A2A2
 12/25 USDA GPTA +88M +0.06% +15F +0.03% +8P
 -0.1DPR -1.4PL -46NM\$ 35NM%ile -41CM\$ 62% Rel
 3.16SCS -0.6SCR 0.30HCR 36% Rel 0.50CCR 38% Rel
 -1.20LIV 30% Rel 1.80GL 43% Rel -3.00EFC 30% Rel
 AGA 12/25 PTAT +1.5 +1.9UDC +1.8FLC 62%Rel PTI +66

MISTY MEADOWS REBEL SUITE USA000078003620 A2A2
 12/25 USDA GPTA -529M +0.03% -20F +0.01% -17P
 +0.9DPR +3.0PL -36NM\$ 31NM%ile -32CM\$ 72% Rel
 2.76SCS-1.00HCR 28% Rel 0.70CCR 41% Rel
 1.60LIV 35% Rel 0.80GL 39% Rel -1.60EFC 34% Rel
 5 Rec YDev: -568M -31F -25P
 3 App 12/25 PTAT +1.9 +0.9UDR +0.6FLC 75%Rel CPI -8
 Appraisal: EX 94 @ 9-09 (EEEE) 3E
 1-11 303D 2X 11330M 4.3% 484F 3.3% 376P 95
 2-11 304D 2X 15710M 4.6% 720F 3.3% 523P 97
 3-11 326D 2X 17730M 4.7% 839F 3.2% 568P 98
 5-00 350D 2X 21940M 4.3% 936F 3.1% 688P 97
 6-01 365D 2X 22910M 4.3% 989F 3.1% 720P DHIA
 7-05 340D 2X 22820M 3.8% 875F 3.2% 735P 96
 8-08 305D 2X 23200M 4.1% 942F 3.2% 745P 97
 2590D 148650M 4.3% 6399F 3.2% 4821P LIFE
 Unanimous All-American Four-Year-Old 2018
 Reserve All-American Five-Year-Old 2019
 Reserve All-American Jr. Three-Year-Old 2017
 HM All-American Lifetime Production Cow 2022
 HM All-American Summer Yearling 2015
 Nominated All-American Jr. Two-Year-Old 2016
 Member, All-American Dam & Daughter 2016
 Reserve Senior Champion NGS-Harrisburg 2019
 Grand Champion Guernsey Gold Showcase 2022
 Dtrs: MISTY MEADOWS MENTOR SUITCASE 94 @ 6-04 (94/92)
 3-07 365D 2X 26240M 3.7% 970F 3.3% 855P DHIA
 Reserve All-American Summer Yearling 2019
 MISTY MEADOWS P SUBDUE-ETV 90 @ 6-02 (88/90)
 3-00 365D 2X 22470M 4.6% 1024F 3.4% 754P DHIA
 Nominated All-American 2019 & 2022
 MISTY MEADOWS P SUBTLE-ETV 90 @ 7-01 (90/88)
 MISTY MEADOWS COPPER SUITEHART 92 @ 5-03 (91/92)
 4-01 305D 2X 20450M 4.6% 933F 3.2% 660P 97
 Reserve All-American Sr. Two-Year-Old 2023

Selling choice of three (3) heifer calves due in March 2026 sired by Torpedo out of Misty Meadows Rebel Suite. Calves will be A2A2 by parentage and rank in the top 20 PTAT Heifers - Dec. 2025. Terms: 35% down, remainder due at time of choice. Choice must be made by the time youngest calf is 90 days of age.

GOLDEN I LONDON USA000068039423 54GU481 A2A2
LANG HAVEN PILOT TORONTO-TW USA000097003761
 Appraisal: EX 91 @ 4-09 (EEEE)
 4-05 323D 2X 20700M 4.4% 920F 3.5% 730P 96

SNIDERS CHALLENGE REBEL USA000068023338
MISTY MEADOWS LEVI SUEDE-ET USA000068039273 A2A2
 Appraisal: EX 94 @ 6-01 (EEEE)
 2-00 304D 2X 11130M 4.1% 458F 3.3% 363P 95
 2-11 324D 2X 20130M 4.7% 954F 3.3% 663P 94
 4-01 305D 2X 20310M 4.5% 913F 3.2% 658P 98
 Unanimous All-American Jr. Three-Year-Old 2015
 All-American Four-Year-Old 2016
 All-American Five-Year-Old 2017
 Reserve All-American Jr. Two-Year-Old 2014
 Reserve All-American Aged Cow 2018
 Member, Unanimous AA Produce of Dam 2015
 Member, All-American Dam & Daughter 2016
 Grand Champion NGS-Harrisburg, Madison & Louisville 2015
 Grand Champion NGS-Louisville 2016
 Dtrs: MISTY MEADOWS GARRETT SUUCHI-ETV 90 @ 6-02 (91/87)
 5-11 365D 2X 22487M 4.4% 985F 3.2% 727P 87
 MISTY MEADOWS AP SUAVE-ETV 90 @ 6-05 (90/85)
 3-00 357D 2X 21890M 4.2% 913F 3.3% 728P 53
 MISTY MEADOWS MENTOR SWAN SONG-ETV 92 @ 4-10 (90/92)
 3-00 311D 2X 20520M 3.8% 770F 3.0% 617P 98

3D: MISTY MEADOWS ARCHIE SIS USA000068017104
 Appraisal: 92 @ 4-06 (91/92)
 4-03 365D 2X 18071M 5.2% 936F 3.7% 663P DHIA
 Honorable Mention All-American Winter Calf 2007
 Nominated All-American Winter Yearling 2008
 Nominated All-American Sr. Three-Year-Old 2010
4D: MISTY MEADOWS JAYCOB SANDY USA00003066744
 Appraisal: 89 @ 5-11 (87/91)
 3-07 349D 2X 18390M 4.8% 883F 3.3% 606P 94
 2326D 109960M 4.8% 5244F 3.3% 3628P LIFE

Two more generations of VG, All-American Nominated Dams



Adams Creek AP Bianca-ETV VG-89
Dam of Lot 7

Bianca!

Unanimous All-American & Jr. AA Jr. 2-Year-Old 2017
 Unanimous All-American & Jr. AA Summer Yearling '16
 Res. Supreme Champ. World Dairy Expo Jr. Show 2017
 Intermediate Champion NGS-Madison 2017
 Grand Champion NJS-Madison 2017
 Junior Champion NGS- & NJS-Madison 2016
 Junior Champion Wisconsin State Fair Jr. Show 2016
 Junior Champion Wisconsin State Jr. Show 2016
 Dam of BRETT at Masterpiece Genetics

LOT 7 CHOICE OF WIPEOUT X BIANCA MARCH CALVES

Consignor: PLOCHER LEVI & CARLY
 SALEM OH
 330-446-0411

PA: +323M -0.14% -10F -0.05% +3P -66CM\$ -57NM\$
 +1.0PTAT +0.9UDC +1.1FLC -1.2DPR +1.1PL +13CPI 2.94SCS

UP THE CREEK AUDREYS WIPEOUT USA000097014511 6GU137 A2A2

12/25 USDA GPTA +1M -0.05% -9F -0.01% -1P
 +0.3DPR +1.8PL +9NM\$ 45NM%ile +8CM\$ 56% Rel
 2.99SCS +1.5SCR -0.80HCR 29% Rel 0.00CCR 31% Rel
 0.30LIV 29% Rel 0.40GL 38% Rel -3.70EFC 28% Rel
 AGA 12/25 PTAT +1.1 +2.0UDC +1.3FLC 56%Rel PTI +36

ADAMS CREEK AP BIANCA-ETV USA000097001121 A2A2

12/25 USDA GPTA +644M -0.22% -10F -0.09% +6P
 -2.6DPR +0.4PL -123NM\$ 14NM%ile -139CM\$ 70% Rel
 2.89SCS-2.70HCR 35% Rel -3.00CCR 46% Rel
 -0.50LIV 37% Rel 0.30GL 51% Rel -6.30EFC 38% Rel
 1 Rec YDev: +4483M +87F +101P
 1 App 12/25 PTAT +0.9 -0.2UDR +0.8FLC 73%Rel CPI -10
 Appraisal: 89 @ 2-03 (90/87)
 Dtrs: ADAMS CREEK FREEDOM BINDI-ETV 91 @ 3-07 (90/90)
 Reserve Grand Champion Midwest Spring Show 2022
 ADAMS CREEK BOSTON-ETV
 Unanimous All-American Spring Calf 2024

Selling choice of two (2) heifer calves due in March 2026 sired by Wipeout out of Adams Creek AP Bianca-ETV. Calves will be A2A2 by parentage. Terms: 35% down, remainder due at time of choice. Choice must be made by the time youngest calf is 90 days of age.

UP THE CREEK LONDON AUDREY 840003210758207 6GU122 A2A2

UP THE CREEK DANIEL WHIPLASH USA000097009580 A2A2

Appraisal: EX 92 @ 4-04 (EEEEEE)
 3-07 365D 2X 24250M 4.4% 1065F 3.5% 851P DHIA

INDIAN ACRES AMERICAN PIE USA000068016348 31GU618 A2A2

ADAMS CREEK MENTOR BEYONCE USA000068015639

Appraisal: 92 @ 5-01 (92/87)
 2-02 362D 2X 21140M 4.2% 888F 3.2% 667P DHIA
 3-04 305D 2X 21410M 4.0% 849F 3.0% 652P 102
 4-06 338D 2X 20300M 3.8% 766F 3.2% 640P 102
 5-08 286D 2X 14150M 4.1% 580F 3.4% 475P 102
 6-09 305D 2X 22900M 3.7% 856F 3.0% 698P 102
 1900D 113740M 4.0% 4527F 3.2% 3620P LIFE
 Reserve Junior All-American Sr. Three-Year-Old 2010
 HM Junior All-American Four-Year-Old 2011
 Dtrs: ADAMS CREEK APIE BROOKLYN 88 @ 5-01 (88/87)
 4-08 305D 2X 23640M 3.9% 916F 3.0% 712P 102
 ADAMS CREEK PHOENIX BLUE IVY 90 @ 3-06 (90/87)
 ADAMS CREEK HP PIE BRYN-ET 86 @ 3-05 (85/85)
 Unanimous All-American Winter Calf 2014

3D: CHUPPS FARM MAGIC BOOM USA000068000081

Appraisal: 89 @ 3-11 (90/82)



Adams Creek Boston-ETV

Unanimous All-American Spring Calf 2024
 All-American Spring Yearling 2025
 Maternal Sister to Lot 7



Valley Gem Hit It Devora EX-93-2E
 3-02 305D 2X 21,220M 5.1% 1,092F 3.8% 805P
 All-American Junior Two-Year-Old 2020
 Dam of Lot 8

Valley Gem Michelangelo Dubai-ETV VG-87
 2nd Sr. 2-Year-Old Midwest Guernsey Show 2025
 Maternal Sister to Lot 8

LOT 8 HURST N GEM TORPEDO DUTCH-ETV 840003286330396 A2A2

Born: 11-11-2024 Tag # 2290
 Consignor: GREWE BRYNN + HURST HANNAH + POLK KYLE
 CUMBERLAND WI

Selling open

#5(T) PTAT & #48(T) CPI Heifer December 2025

12/25 USDA GPTA +478M +0.03% +27F +0.01% +18P
 -0.9DPR -2.2PL -29NM\$ 32NM%ile -30CM\$ 54% Rel
 3.30SCS-0.40HCR 26% Rel -0.90CCR 28% Rel
 -1.70LIV 26% Rel 0.30GL 29% Rel -2.20EFC 26% Rel
 0 App 12/25 PTAT +1.8 +1.9UDR +1.5FLC 56%Rel CPI +78

GOLDEN I LONDON USA000068039423 54GU481 A2A2

LANG HAVEN PILOT TORONTO-TW USA000097003761

Appraisal: EX 91 @ 4-09 (EEEE)
 4-05 323D 2X 20700M 4.4% 920F 3.5% 730P 96

LANG HAVEN LONDON TORPEDO 840003233414503 54GU520 A2A2

12/25 USDA GPTA +88M +0.06% +15F +0.03% +8P
 -0.1DPR -1.4PL -46NM\$ 35NM%ile -41CM\$ 62% Rel
 3.16SCS -0.6SCR 0.30HCR 36% Rel 0.50CCR 38% Rel
 -1.20LIV 30% Rel 1.80GL 43% Rel -3.00EFC 30% Rel
 AGA 12/25 PTAT +1.5 +1.9UDC +1.8FLC 62%Rel PTI +66

VALLEY GOLD KOJACKS HIT IT-ETV USA000097000381 138GU7034 A2A2

VALLEY GEM LUCK DEIDRA USA000097005385 A2A2

Appraisal: EX 92 @ 5-04 (EEEE)
 2-00 291D 2X 15570M 5.3% 827F 3.5% 540P 99
 2-11 282D 2X 18920M 4.8% 902F 3.0% 572P 96
 3-09 269D 2X 16050M 4.9% 784F 3.3% 531P 95
 5-00 305D 2X 23930M 5.0% 1205F 3.3% 796P 95
Unanimous All-American Four-Year-Old 2020
Reserve All-American Jr. Three-Year-Old 2019
Nominated All-American Jr. Two-Year-Old 2018
Nominated All-American Five-Year-Old 2021
Member, All-American Best Three Females & Dam & Daughter 2020
Reserve Grand Champion NGS-Louisville 2020
 Dtrs: VALLEY GEM KJ MISS DRAMATIC 86 @ 4-11 (86/85)
 VALLEY GEM APIE DADDYS GIRL-ETV 87 @ 3-05 (85/88)
 2-09 314D 2X 17640M 4.5% 802F 3.2% 562P 101
Nominated All-American Fall Calf 2022
 VALLEY GEM JD DRIVE ME CRAZY-ETV 86 @ 3-06 (85/83)
 2-09 355D 2X 19960M 4.7% 936F 3.7% 730P DHIA
 VALLEY GEM APIE DAISY DUKES-ETV 90 @ 3-11 (91/88)
 VALLEY GEM R DELIVER THE GOODS-ETV 86 @ 2-05 (87/83)
Nominated All-American Yearling in Milk 2025
 VALLEY GEM PC MISSILE DEONDR-ETV 87 @ 2-04 (87/86)
Reserve Intermediate Champion Ohio State Fair Jr. Show 2025
 VALLEY GEM PC MISSILE DICEY-ETV 83 @ 2-02 (85/81)
 VALLEY GEM PC MISSILE DERBY-ETV 82 @ 2-02 (83/85)
 VALLEY GEM APIE DOYATHING-ETV
Nominated All-American Yearling in Milk 2025
 VALLEY GEM PC JP DRUM ROLL-ETV
Honorable Mention All-American Fall Calf 2025
 VALLEY GEM PC JCP DUVET-ETV
Reserve All-American Fall Calf 2025

VALLEY GEM HIT IT DEVORA USA000097007306 A2A2

12/25 USDA GPTA +240M +0.09% +26F +0.02% +12P
 -0.1DPR +0.4PL +106NM\$ 62NM%ile +110CM\$ 70% Rel
 3.15SCS-1.80HCR 25% Rel -0.50CCR 34% Rel
 0.30LIV 28% Rel 0.10GL 36% Rel -1.60EFC 28% Rel
 4 Rec YDev: +275M +43F +20P
 4 App 12/25 PTAT +1.4 +0.9UDR +0.5FLC 74%Rel CPI +54
 Appraisal: EX 93 @ 7-00 (EEEE) 2E
 1-11 276D 2X 14400M 5.1% 729F 3.7% 529P 94
 3-02 305D 2X 21220M 5.1% 1092F 3.8% 805P 95
 5-00 252D 2X 14510M 5.0% 726F 3.4% 494P 83
 6-06 305D 2X 20290M 4.8% 979F 3.4% 692P 93
All-American Junior Two-Year-Old 2020
Junior All-American & Nom. All-American Four-Year-Old 2022
Junior All-American Five-Year-Old 2023
Reserve Junior All-American Aged Cow 2025
Member, All-American Best Three Females 2020 & 2022
Member, All-American Dam & Daughter 2020
Reserve Intermediate Champion NGS-Louisville 2020
Reserve Grand Champion NJS-Louisville 2025
Reserve Grand Champion NJS-Madison 2022
 Dtrs: VALLEY GEM MICHELANGELO DUBAI-ETV 87 @ 2-08 (88/83)
 2nd Sr. Two-Year-Old Midwest Guernsey Show 2025
 VALLEY GEM MICHELANGELO DUBLIN-ETV 85 @ 2-08 (86/82)
 1-09 305D 2X 17220M 4.9% 843F 3.5% 595P 93
 VALLEY GEM MISSILE DETROIT-ET 85 @ 2-03 (84/86)



Coulee Crest Pilot Lava-ET EX-92-3E
 168,400M 5.5% 9,267F 3.8% 6,387P Life
 Former #1 CPI Cow
 Dam of Lot 9



Coulee Crest Theo Summer-ETV EX-90 92MS
 2-02 356D 2X 18,660M 5.4% 1,012F 3.4% 642P
 Nominated All-American 2023 & 2024
 Maternal Sister to Lot 9

LOT 9 COULEE CREST SPARTA SAGE-ETV 840003257821224 A2A2

Born: 12-23-2023 Tattoo LE P464 RE
 Consignor: HAYES D F & W B
 CAMBRIDGE OH

12/25 USDA GPTA +469M -0.05% +13F +0.01% +18P
 -0.6DPR +0.2PL +80NM\$ 56NM%ile +89CM\$ 55% Rel
 2.85SCS-0.90HCR 28% Rel -1.00CCR 30% Rel
 0.20LIV 26% Rel 1.50GL 34% Rel 0.60EFC 27% Rel
 0 App 12/25 PTAT +0.8 +1.5UDR +1.1FLC 56%Rel CPI +64

KADENCE JAVA SPARTA-P USA000097013057 6GU130 A2A2

12/25 USDA GPTA +714M -0.12% +11F +0.00% +24P
 -2.2DPR +0.1PL +31NM\$ 45NM%ile +39CM\$ 60% Rel
 2.80SCS -2.20HCR 29% Rel -3.20CCR 32% Rel
 -1.60LIV 27% Rel 1.40GL 40% Rel -1.10EFC 28% Rel
 AGA 12/25 PTAT +1.5 +1.5UDC +1.6FLC 59%Rel PTI +61

COULEE CREST PILOT LAVA-ET USA000097000835

12/25 USDA GPTA +393M +0.02% +22F +0.04% +21P
 -0.2DPR -1.3PL +56NM\$ 50NM%ile +69CM\$ 82% Rel
 3.03SCS 0.50HCR 40% Rel 0.30CCR 48% Rel
 0.40LIV 35% Rel 1.30GL 61% Rel 3.00EFC 37% Rel
 5 Rec YDev: +1124M +91F +65P

3 App 12/25 PTAT +0.3 +1.0UDR +0.5FLC 82%Rel CPI +66
 Appraisal: EX 92 @ 9-05 (EEEE) 3E

2-11 365D 3X 27590M 5.6% 1558F 3.6% 997P DHIA
 4-01 365D 3X 27730M 5.8% 1618F 3.9% 1071P DHIA
 5-04 365D 3X 32480M 5.6% 1812F 3.6% 1182P DHIA
 6-06 365D 3X 33320M 5.4% 1805F 3.6% 1206P DHIA
 7-11 365D 3X 27080M 5.1% 1376F 4.1% 1097P DHIA
 2109D 168400M 5.5% 9267F 3.8% 6387P LIFE

Dam of HURRICANE, TSUNAMI, SAVAGE and SIMON

#58(T) CPI Cow December 2025

Dam of 7 Top 200 CPI Cows & 15 Top 200 CPI Heifers - Dec. 2025

Dtrs: COULEE CREST REPUTATION SUNNY-ETV 90 @ 3-01 (91/87)

2-05 365D 2X 23270M 4.6% 1079F 3.6% 847P DHIA
 COULEE CREST JC PENNEY SUSI-ETV 87 @ 3-00 (85/90)
 2-08 301D 2X 22030M 4.5% 991F 3.4% 739P 97

COULEE CREST THEO SUMMER-ETV 90 @ 3-05 (92/92)

Nominated All-American 2023 & 2024

COULEE CREST LONDON SKYLAR-ETV 89 @ 3-02 (90/90)

Honorable Mention All-American Jr. Two-Year-Old 2023

COULEE CREST LONDON STEFFI-ETV 90 @ 3-04 (87/91)

3-02 365D 2X 25500M 5.4% 1382F 3.6% 929P DHIA

COULEE CREST SPRINGHILL LAVA 2-ETV 90 @ 3-11 (87/91)

1-11 365D 2X 23050M 3.8% 866F 3.6% 835P DHIA

COULEE CREST JC PENNEY SIRI-ETV 90 @ 4-01 (87/87)

2-00 365D 3X 25560M 5.5% 1409F 3.4% 873P DHIA

Kappa Casein BB
 Bred 9/20/25 Due 6/29/26 to:
 Villa Crest Ian Thor 97012353 554GU517 A2A2 SEXED

#139(T) CPI Heifer December 2025

SPRINGHILL JAVA-ETV-P 840003151591431 200GU123 A2A2

GR-KADENCE SHERLOCK SPICED LATTE USA000097007125 A2A2

Appraisal: EX 94 @ 6-07 (EEEE) 2E
 5-10 365D 2X 33580M 4.6% 1558F 3.8% 1266P DHIA

LINDRIAN GRUMPY PILOT-ET CAN000011632409 200GU307 A2A2

COULEE CREST LAREDO LALITA-ET USA000068039047 A2A2

Appraisal: 84 @ 4-06 (82/84) Gold Star Dam - 2020
 1-09 365D 3X 22370M 5.4% 1216F 3.7% 824P DHIA
 3-02 365D 3X 29720M 5.6% 1652F 3.7% 1094P DHIA
 4-05 333D 3X 23610M 5.4% 1275F 3.7% 867P 94
 5-06 358D 3X 26720M 5.5% 1458F 3.6% 975P 94
 6-07 365D 3X 30500M 5.9% 1786F 3.8% 1146P DHIA
 2150D 153860M 5.6% 8602F 3.7% 5756P LIFE

3D: FLAMBEAU MANOR DECISION LORI-ET USA000068012709 A2A2

Appraisal: 90 @ 8-02 (88/90) Gold Star Dam - 2013
 3-09 365D 3X 44250M*5.9% 2600F*3.0% 1313P* 94
 2328D 184340M 5.4% 10017F 3.3% 6002P LIFE

4D: FLAMBEAU MANOR ENHANCER LANA USA000003043629

Appraisal: 92 @ 7-11 (90/90) Gold Star Dam - 2001
 5-10 365D 2X 30271M 5.4% 1645F 3.2% 968P DHIA
 1980D 130421M 4.9% 6454F 3.3% 4293P LIFE

5D: FLAMBEAU MANOR VOL LAURA USA000003022186

Appraisal: 90 @ 4-07
 4-02 305D 2X 18260M 4.2% 765F 3.7% 680P DHIA

6D: FLAMBEAU MANOR LESLIE USA000002947026

Appraisal: 90 @ 3-08 Gold Star Dam - 1992

7D: FLAMBEAU MANOR LAUREL USA000002861817

Appraisal: 80 @ 9-04 Gold Star Dam - 1992
 6-01 357D 2X 21602M 4.5% 974F 3.7% 792P DHIA
 3193D 167770M 4.6% 7639F 3.7% 6168P LIFE



Warwick Manor Agenda Brooke EX-90
 5-07 323D 27,800M 5.2% 1,459F 3.2% 880P
 Member, Res. AA Exhibitor's Herd 2015
 Dam of Lot 10



Warwick Manor Tiller Bebe EX-92
 126,760M 4.5% 5,696F 3.1% 3,870P Lifetime
 All-American Jr. Three-Year-Old 2009
 Granddam of Lot 10

LOT 10 WARWICK MANOR TORPEDO BLAIR-ETV USA000097018182

Born: 03-08-2025
 Consignor: BATES CINDY & DIETZ LORRIE
 SOUTHLINGTON OH

PA: -118M +0.01% -3F -0.02% -7P -175CM\$ -167NM\$
 +1.0PTAT +1.1UDC +0.7FLC +0.2DPR -1.6PL +7CPI 3.18SCS

LANG HAVEN LONDON TORPEDO 840003233414503 54GU520 A2A2

12/25 USDA GPTA +88M +0.06% +15F +0.03% +8P
 -0.1DPR -1.4PL -46NM\$ 35NM%ile -41CM\$ 62% Rel
 3.16SCS -0.6SCR 0.30HCR 36% Rel 0.50CCR 38% Rel
 -1.20LIV 30% Rel 1.80GL 43% Rel -3.00EFC 30% Rel
 AGA 12/25 PTAT +1.5 +1.9UDC +1.8FLC 62%Rel PTI +66

WARWICK MANOR AGENDA BROOKE USA000078004789 A2A2

12/25 USDA GPTA -323M -0.04% -21F -0.07% -22P
 +0.5DPR -1.7PL -287NM\$ 1NM%ile -308CM\$ 70% Rel
 3.20SCS -1.50HCR 29% Rel 0.30CCR 40% Rel
 -2.70LIV 31% Rel 1.00GL 40% Rel -1.10EFC 32% Rel
 4 Rec YDev: -1096M -62F -48P
 2 App 12/25 PTAT +0.5 +0.2UDR -0.4FLC 71%Rel CPI -52
 Appraisal: EX 90 @ 7-00 (EE+VV)
 2-01 333D 2X 19910M 5.1% 1020F 3.2% 634P 95
 5-07 323D 2X 27800M 5.2% 1459F 3.2% 880P 98
 6-09 305D 2X 22150M 5.1% 1139F 3.2% 713P 97
 Member, Reserve All-American Exhibitor's Herd 2015

A2A2 by parentage Selling Open

GOLDEN I LONDON USA000068039423 54GU481 A2A2

LANG HAVEN PILOT TORONTO-TW USA000097003761

Appraisal: EX 91 @ 4-09 (EEEEVE)
 4-05 323D 2X 20700M 4.4% 920F 3.5% 730P 96

SNIDERS BL SPRUCE AGENDA-ET USA000068038831

WARWICK MANOR TILLER BEBE USA000068012314

Appraisal: 92 @ 4-05 (93/90)
 1-11 311D 2X 14640M 4.2% 621F 3.0% 434P DHIA
 3-00 365D 2X 19250M 4.2% 816F 3.0% 587P DHIA
 4-02 273D 2X 17900M 4.3% 762F 3.0% 544P 95
 5-01 365D 2X 23420M 4.0% 929F 3.0% 691P DHIA
 6-10 365D 2X 25880M 4.4% 1142F 2.9% 740P DHIA
 2163D 126760M 4.5% 5696F 3.1% 3870P LIFE
 All-American Jr. Three-Year-Old 2009
 Honorable Mention All-American Four-Year-Old 2010
 Nominated All-American Five-Year-Old 2011
 Reserve Intermediate Champion NGS-Louisville 2009

3D: WARWICK MANOR NP BELLE USA000003076485

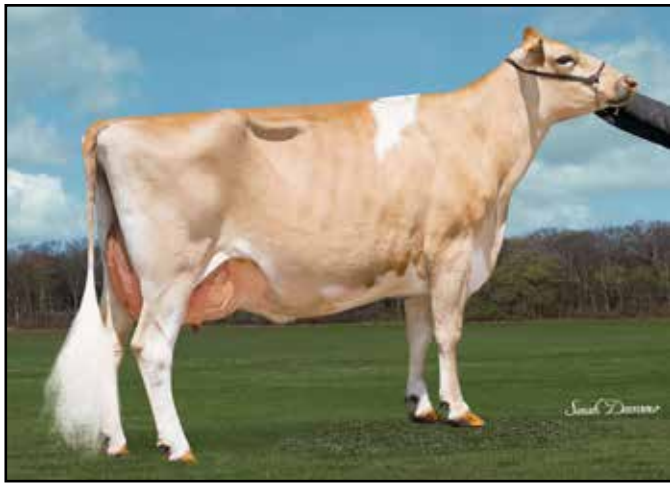
Appraisal: 86 @ 4-04 (88/76)

4D: CEDAR FRINGED BERNADINE USA000003046409

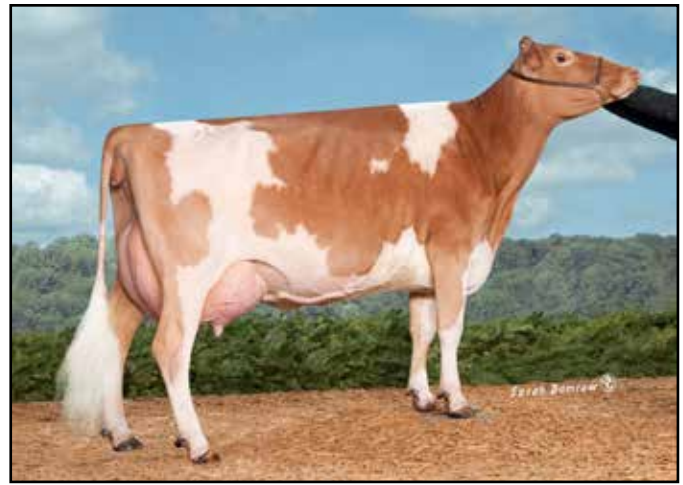
Appraisal: 90 @ 4-02
 5-01 365D 2X 16540M 5.0% 819F 3.6% 596P DHIA
 Dtr: WARWICK MANOR WIL BELLA 91 @ 4-06 (92/90)
 3-00 337D 2X 20960M 4.6% 970F 3.5% 735P 93
 Honorable Mention All-American Sr. Two-Year-Old 2003



Warwick Manor Mich Bebe VG-88
 Nominated All-American Jr. Three-Year-Old 2025
 Maternal Family of Lot 10



Stil Dreamn Judgment Trixie EX-94
156,700M 4.6% 7,144F 3.2% 5,087P Life
Granddam of Lot 11



Dix Lee Mission Taffy EX-94 95MS
5-04 288D 2X 19,590M 4.4% 861F 3.3% 651P
HM All-American 2013 & 2014
3rd Dam of Lot 11

LOT 11 COULEE CREST LEGACY TIKI 840003295359181 A2A2

Born: 10-09-2025 Tag # 636
Consignor: CHUPP NEVAEH EMMET TYE REECE & TATUM
INOLA OK

12/25 USDA GPTA -132M +0.07% +5F +0.04% +3P
-1.8DPR +0.7PL -36NM\$ 31NM%ile -26CM\$ 53% Rel
3.01SCS-2.30HCR 26% Rel -2.70CCR 29% Rel
-0.70LIV 24% Rel 0.60GL 30% Rel -0.30EFC 25% Rel
0 App 12/25 PTAT +1.1 +1.7UDR +1.4FLC 55%Rel CPI +37

KADENCE JAVA LEGACY USA000097015725 788GU13 A2A2

12/25 USDA GPTA +386M -0.05% +9F -0.02% +9P
-3.0DPR +0.2PL -46NM\$ 35NM%ile -50CM\$ 61% Rel
3.00SCS -3.00HCR 29% Rel -4.70CCR 35% Rel
-1.70LIV 28% Rel 0.70GL 41% Rel -3.10EFC 30% Rel
AGA 12/25 PTAT +1.5 +2.1UDC +2.1FLC 61%Rel PTI +49

STIL DREAMN CC TSUNAMI TRIX-ETV 840003257821077 A2A2

12/25 USDA GPTA -555M +0.09% -11F +0.06% -9P
-0.6DPR +0.1PL -151NM\$ 10NM%ile -140CM\$ 60% Rel
2.98SCS-1.50HCR 30% Rel -0.80CCR 33% Rel
0.40LIV 28% Rel 0.00GL 40% Rel -0.20EFC 29% Rel
0 App 12/25 PTAT +0.6 +1.4UDR +0.4FLC 60%Rel CPI +2
2-03 305D 2X 11796M 4.4% 524F 3.6% 430P Proj. Act.

3D: DIX LEE MISSION TAFFY USA000068030280

Appraisal: 94 @ 6-06 (95/91)
5-04 288D 2X 19590M 4.4% 861F 3.3% 651P 91
Honorable Mention All-American Five-Year-Old 2013
Honorable Mention All-American Aged Cow 2014
Dtr: STIL DREAMN SPIDER TERRIFIC 90 @ 5-10 (91/90)
5-00 323D 2X 23310M 3.9% 912F 3.6% 832P 96

4D: DIX LEE FARMER TAMMY USA000068007792

Appraisal: 84 @ 4-00 (81/88)
4-10 300D 2X 17210M 4.1% 714F 3.3% 566P 97

5D: PEMBERTON K TAYLOR USA000003078123

Appraisal: 78 @ 5-00 (77/78)
3-06 290D 2X 19160M 4.4% 839F 3.2% 604P 93

SPRINGHILL JAVA-ETV-P 840003151591431 200GU123 A2A2

KADENCE FAMES LOVELY USA000097003682 A2A2

Appraisal: EX 96 @ 8-00 (EEEEEE)
7-07 365D 2X 33190M 4.8% 1588F 3.5% 1153P DHIA

COULEE CREST TSUNAMI-ETV 840003214098840 200GU124 A2A2

STIL DREAMN JUDGMENT TRIXIE USA000068047261 A2A2

Appraisal: EX 94 @ 12-01 (EEEEEE)
2-00 256D 2X 7680M 5.2% 399F 3.2% 244P 93
2-11 306D 2X 11270M 4.6% 522F 3.3% 367P 96
4-01 289D 2X 14930M 4.2% 628F 3.3% 490P 97
5-01 355D 2X 16850M 4.2% 701F 3.4% 574P 97
6-03 305D 2X 18610M 4.9% 915F 3.3% 610P 96
7-08 305D 2X 18540M 4.4% 807F 3.1% 578P 95
9-00 365D 2X 18440M 4.5% 828F 3.2% 586P DHIA
11-06 365D 2X 17410M 4.2% 734F 3.2% 549P DHIA
13-03 349D 2X 14110M 4.8% 671F 3.1% 443P 94
3794D 156700M 4.6% 7144F 3.2% 5087P LIFE
Dtrs: STIL DREAMN BOWMAN TRIUMPH 87 @ 4-00 (87/83)
STIL DREAMN DRONE TRINITY-ETV 89 @ 3-02 (91/86)
STIL DREAMN JD TENNESSEEHONEY 87 @ 2-10 (86/88)
Reserve Junior Champion Missouri State Fair 2024
STIL DREAMN CC TSUNAMI TWIKS-ETV 85 @ 2-04 (85/87)

6D: PEMBERTON F TORRI USA000003016808

Appraisal: 90 @ 5-05
5-03 305D 2X 22410M 5.1% 1135F 3.4% 769P DHIR
1937D 100470M 4.9% 4889F 3.5% 3527P LIFE
Dtr: PEMBERTON PP BILLIE JO 90 @ 4-02

7D: PEMBERTON TF TRISTO USA000002973155

Appraisal: 86 @ 3-08
6-11 305D 2X 23650M 4.2% 999F 3.1% 743P DHIA
1860D 114370M 4.4% 5059F 3.3% 3739P LIFE



Cozy Nook H Gypsy EX-93
 102,070M 5.1% 5,214F 3.7% 3,757P Life
 HM All-American Four-Year-Old 2009
 3rd Dam of Lot 12

LOT 12 SPOLTMANS GRACIE

840003293538024

Born: 09-22-2025 Tag # 103
 Consignor: SPOLTMAN ALLEN
 MARIA STEIN OH

PA: +103M +0.01% +6F -0.01% +2P +75CM\$ +75NM\$
 +0.9PTAT +0.7UDC +0.6FLC +0.2DPR +0.8PL +27CPI 2.92SCS

SPRINGHILL JIGSAW-ETV 840003265818612 200GU130 A2A2

12/25 USDA GPTA +257M +0.01% +13F -0.02% +5P
 -0.2DPR -0.2PL +16NM\$ 45NM%ile +12CM\$ 56% Rel
 3.01SCS -0.70HCR 29% Rel -0.10CCR 31% Rel
 -0.20LIV 28% Rel 0.40GL 32% Rel -1.70EFC 28% Rel
 AGA 12/25 PTAT +1.4 +0.9UDC +1.0FLC 56%Rel PTI +39

FEMARA GINNY USA000097009186

12/25 USDA PTA -52M +0.01% -1F +0.00% -1P
 +0.5DPR +1.7PL +133NM\$ 68NM%ile +137CM\$ 41% Rel
 2.83SCS 0.70HCR 10% Rel 0.50CCR 22% Rel
 1.80LIV 12% Rel 1.10GL 28% Rel 1.80EFC 12% Rel
 3 Rec YDev: +64M -4F -3P
 5 App 12/25 PTAT +0.4 +0.4UDR +0.2FLC 41%Rel CPI +14
 Appraisal: EX 90 @ 5-11 (EEGVE)
 1-09 318D 2X 11700M 4.5% 528F 3.2% 380P 80
 2-10 305D 2X 12320M 4.6% 565F 3.4% 422P 87
 4-07 305D 2X 18840M 4.3% 811F 3.2% 599P 90
 5-10 305D 2X 12175M 4.9% 595F 3.6% 435P Proj. Act.
 1st Senior Three-Year-Old Spring Dairy Expo 2023
 Dtr: SPOLTMANS JOANNA 85 @ 2-11 (86/84)
 2nd Sr. Two-Year-Old Ohio State Fair Jr. Show 2025

LANG HAVEN LONDON TORPEDO 840003233414503 54GU520 A2A2

SPRINGHILL MENTOR JOYCE 840003141692353 A2A2

Appraisal: EX 95 @ 6-01 (EEEEEE)
 7-02 365D 2X 44580M*4.3% 1897F 3.2% 1422P* DHIA

WARWICK MANOR BO AXEL USA000097001046 A2A2

FEMARA PRADA GWENDOLYN-ET USA000078001985

Appraisal: + 83 @ 5-11 (++)G++)
 2-03 305D 2X 14100M 3.7% 525F 3.4% 481P 97
 3-10 267D 2X 14970M 4.7% 698F 3.6% 539P 97
 4-09 290D 2X 16870M 4.7% 800F 3.5% 588P 96
 5-10 300D 2X 22330M 5.7% 1279F 3.4% 762P DHIA

3D: COZY NOOK H GYPSY USA000068003890

Appraisal: 93 @ 5-08 (93/92)
 5-05 365D 2X 25630M 4.5% 1163F 3.6% 916P DHIA
 1742D 102070M 5.1% 5214F 3.7% 3757P LIFE
 Honorable Mention All-American Four-Year-Old 2009
 Grand Champion Wisconsin State Fair 2009

Dtr: FEMARA PRADA GLORIA-ET 90 @ 4-03 (89/90)

3-04 305D 2X 25230M 4.2% 1064F 3.5% 871P 98

4D: COZY NOOK N GWEN USA000003078404

Appraisal: 90 @ 4-09 (90/87)
 2-02 341D 2X 18210M 5.0% 913F 3.7% 678P 99

5D: COZY NOOKS L GLORY USA000003062964

Appraisal: 70 @ 2-06

6D: COZY NOOKS F GILDA USA000003027640

Appraisal: 90 @ 5-11
 2-07 365D 2X 16900M 4.8% 810F 3.8% 643P DHIA

7D: COZY NOOKS P GLORIA USA000002978037

Appraisal: 85 @ 4-01
 4-01 291D 2X 16210M 5.0% 810F 3.4% 554P DHIR

8D: COZY NOOK F GLITTER USA000002925449

Appraisal: 90 @ 5-01
 6-05 365D 2X 22350M 4.4% 986F 3.2% 716P DHIA

9D: GR-NEDROW FARMS TELESTAR GAL USA000002887650

Appraisal: 85 @ 7-00
 9-03 365D 2X 22800M 4.2% 955F 3.4% 777P DHIA
 2838D 133150M 4.3% 5722F 3.4% 4547P LIFE

10D: PR-NEDROW FARMS LUCKY GIRL USA000376004636

Appraisal: 83 @ 4-05
 5-00 365D 2X 19620M 4.5% 886F 3.3% 647P DHIA



Up The Creek Toros Kirstie EX-91
 2-00 365D 2X 15,770M 5.2% 823F 3.7% 586P
 Granddam of Lot 13

LOT 13 STGEN OLAF 6199 KYLIE-ETV 840003296990149 A2A2

Born: 09-17-2025 Tag # 6199
 Consignor: ST GENETICS OHIO HEIFER CENTER
 SOUTH CHARLESTON OH

PA: +419M +0.09% +35F +0.03% +19P +486CM\$ +474NM\$
 +0.5PTAT +0.7UDC +0.3FLC +0.4DPR +3.5PL +80CPI 2.83SCS

DAIRYMAN CHECKMATE OLAF 840003240506902 49GU242 A1A2

12/25 USDA GPTA +760M -0.01% +34F +0.01% +27P
 +1.0DPR +4.4PL +524NM\$ 99NM%ile +534CM\$ 58% Rel
 2.84SCS 1.90HCR 30% Rel 2.40CCR 33% Rel
 0.90LIV 29% Rel 0.50GL 41% Rel 5.30EFC 29% Rel
 AGA 12/25 PTAT +0.2 +0.7UDC +0.2FLC 58%Rel PTI +92

ST GEN THEO KIRBIE-ETV 840003213129026 A2A2

12/25 USDA GPTA +78M +0.19% +36F +0.04% +10P
 -0.2DPR +2.6PL +423NM\$ 97NM%ile +438CM\$ 66% Rel
 2.81SCS 1.70HCR 32% Rel 0.80CCR 36% Rel
 1.00LIV 29% Rel 0.40GL 43% Rel 3.10EFC 31% Rel
 1 Rec YDev: +1094M +73F +68P
 1 App 12/25 PTAT +0.7 +0.6UDR +0.3FLC 64%Rel CPI +63
 Appraisal: + 80 @ 2-04 (++)G+G)
 2-00 305D 3X 15460M 5.3% 816F 3.9% 597P 104
 Dam of LANDERS at ST Genetics
 #69(T) CPI Cow December 2025

3D: UP THE CREEK ALSTAR KIRSTEN-ET 840003013954265

Appraisal: EX 90 @ 9-11 (VEVEE)
 8-09 353D 2X 21180M 4.8% 1008F 3.4% 712P 98
 2780D 164710M 4.6% 7616F 3.3% 5421P LIFE

4D: LANTZ FARM MAX KISS USA000068017376

Appraisal: 92 @ 4-03 (94/90)
 3-11 365D 2X 23450M 4.3% 1003F 3.5% 820P DHIA

5D: LANTZ FARM SHARP KISS USA000003074136

Appraisal: 87 @ 4-02 (87/81)
 2-00 351D 2X 21450M 4.1% 890F 3.2% 697P 95

6D: AMBER RAE MAGICS KAY USA000003047177

Appraisal: 88 @ 4-08
 3-05 305D 3X 25960M 4.6% 1202F 3.3% 856P DHIA

7D: HILLDALE PER KERRY-ET USA000003020113

Appraisal: 90 @ 4-05
 3-02 365D 2X 21940M 5.0% 1092F 3.8% 827P DHIA

Kappa Casein BB

03/2026 Genomic Evaluation: +100M +0.09% +20F +0.06% +14P
 +1.1DPR +5.0PL +489NM\$ +510CM\$ 2.77SCS +1.4HCR +2.5CCR
 +1.80LIV +1.0GL PTAT +1.0 +1.2UDR +0.4FLC 52%Rel CPI +74
Ranks #60 on Dec. 2025 CPI Heifer List

COULEE CREST RICHARD CHECKMATE 840003208361479 6GU116 A2A2

JENSGOLDEN CORDELL ONALA 840003128753804 A1A2

Appraisal: EX 91 @ 9-09 (EEVEV) 2E Gold Star Dam - 2020
 5-05 365D 3X 29840M 5.3% 1571F 3.6% 1080P DHIA

RIPLEY FARMS NETWORK C THEO 840003146571505 6GU112 A2A2

UP THE CREEK TOROS KIRSTIE USA000097000049 A2A2

Appraisal: EX 91 @ 4-10 (EEVEE)
 2-00 365D 2X 15770M 5.2% 823F 3.7% 586P DHIA
 3-03 268D 2X 15290M 4.7% 711F 3.5% 538P 67
 5th Senior Three-Year-Old NGS-Madison 2019

8D: HILLDALE P KITTY-ET USA000002975964

Appraisal: 86 @ 3-11
 3-07 365D 2X 19830M 5.5% 1098F 4.0% 800P DHIA

9D: HILLDALE DE KAYLINE USA000002804798

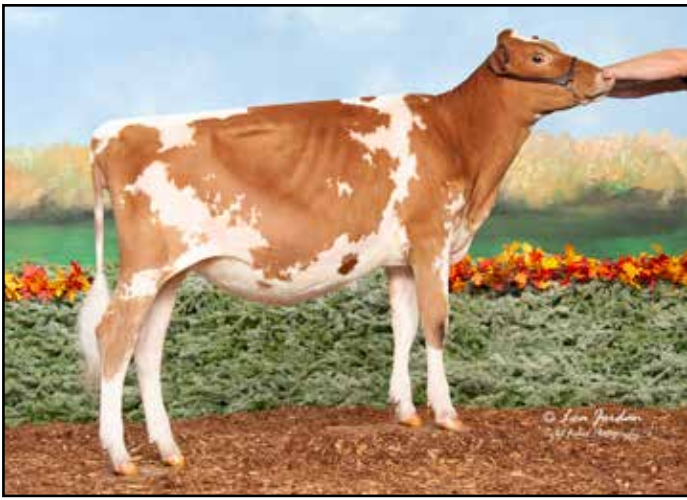
Appraisal: 95 @ 4-10 Gold Star Dam - 1986
 4-00 305D 2X 19400M 5.0% 961F 3.7% 710P DHIR

10D: HILLDALE T H KAY USA000002671683

Appraisal: 92 @ 6-09 Gold Star Dam - 1983
 5-04 336D 2X 16800M 5.1% 855F DHIA
 2699D 120990M 4.8% 5804F 0.4% 505P LIFE

11D: HILLDALE DARI JANET USA000002564716

Appraisal: 86 @ 7-07
 3292D 117780M 5.4% 6381F LIFE



Warwick Manor Indigo Chimmy
 HM Junior All-American Winter Calf 2023
 Full Sister to Lot 14



Warwick Manor Atom Cleo EX-90
 3-03 365D 2X 27,850M 5.7% 1,597F 3.3% 926P
 Nom. All-American Sr. Three-Year-Old 2025
 Maternal Sister to Lot 14

LOT 14 WARWICK MANOR INDIGO CHEERS USA000097018150

Born: 12-16-2024
 Consignor: MOSER DARLENE
 PLEASANT LAKE IN

PA: -107M +0.05% +3F -0.02% -6P -13CM\$ -9NM\$
 +0.3PTAT +1.1UDC -0.1FLC -0.8DPR +0.5PL +4CPI 2.96SCS

EBY MANOR INDIGO CAN000012949167 200GU122 A2A2

12/25 USDA GPTA +256M +0.07% +24F -0.07% -3P
 -2.6DPR -2.9PL -86NM\$ 30NM%ile -101CM\$ 81% Rel
 2.99SCS -1.30HCR 36% Rel -3.50CCR 46% Rel
 -3.20LIV 34% Rel 0.30GL 88% Rel -0.50EFC 38% Rel
 AGA 12/25 PTAT +0.7 +1.6UDC +0.6FLC 72%Rel PTI +24

WARWICK MANOR BOHMAHA CLARABELLE USA000097008178 A2A2

12/25 USDA GPTA -470M +0.02% -19F +0.04% -9P
 +1.1DPR +3.9PL +68NM\$ 53NM%ile +76CM\$ 67% Rel
 2.93SCS -1.40HCR 27% Rel 0.60CCR 37% Rel
 3.10LIV 25% Rel 0.40GL 28% Rel -0.60EFC 25% Rel
 4 Rec YDev: -1540M -58F -32P
 2 App 12/25 PTAT -0.2 +0.5UDR -0.8FLC 70%Rel CPI -17
 Appraisal: + 83 @ 5-10 (+VPV+)
 2-05 365D 2X 17870M 5.5% 987F 3.5% 621P DHIA
 3-08 305D 2X 16060M 5.7% 922F 3.6% 577P DHIA
 5-08 301D 2X 17320M 5.5% 957F 3.2% 562P 97
 Dtrs: WARWICK MANOR ATOM CLEO 90 @ 4-00 (91/88)
 3-03 365D 2X 27850M 5.7% 1597F 3.3% 926P DHIA
 Nominated All-American Sr. Three-Year-Old 2025
 WARWICK MANOR INDIGO CHIMMY 82 @ 2-09 (81/79)
 Honorable Mention Junior All-American Winter Calf 2023



Warwick Manor Chris Carly EX-92
 157,610M 5.3% 8,333F 3.6% 5,715P Life
 Res. Jr. All-American Lifetime Production Cow 2023
 Granddam of Lot 14

A2A2 by parentage Selling open

2nd Winter Calf NE Indiana Dairy Show 2025
 3rd Winter Calf Midwest Guernsey Classic 2025

MARODORE T LES LIGHTNING-ET USA000068029818 7GU445 A2A2

EBY MANOR D L INDY CAN000011553848

Appraisal: EX 92 @ 7-06 CAN
 7-01 365D 2X 27000M 5.8% 1565F 3.5% 952P CAN

SNIDERS SENATOR BOMAHA USA000097001065 A2A2

WARWICK MANOR CHRIS CARLY USA000068038889 A2A2

Appraisal: EX 92 @ 10-11 (EEVVE)
 2-02 336D 2X 18870M 5.6% 1052F 3.4% 651P 96
 3-03 365D 2X 19820M 5.3% 1057F 3.9% 770P DHIA
 4-11 365D 2X 23490M 5.2% 1227F 3.5% 826P DHIA
 6-03 317D 2X 22010M 5.1% 1126F 3.4% 748P 98
 7-03 344D 2X 22500M 5.5% 1242F 3.8% 847P 97
 8-05 365D 2X 22760M 5.1% 1151F 3.5% 806P DHIA
 10-01 362D 2X 19750M 5.1% 1001F 3.6% 718P 98
 2695D 157610M 5.3% 8333F 3.6% 5715P LIFE
 Reserve Junior All-American Lifetime Production Cow 2023
 Nominated All-American Lifetime Production Cow 2023
 Grand Champion Guernsey Gold Showcase Jr. Show 2021
 Reserve Senior Champion Guernsey Gold Showcase Jr. Show 2023

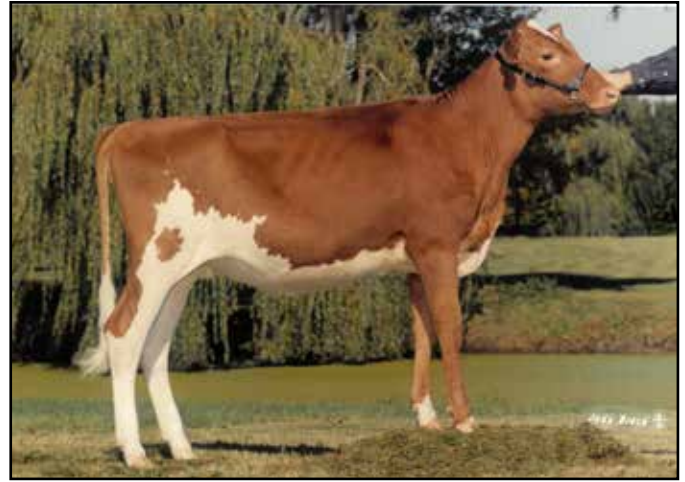
3D: WARWICK MANOR ATLAS CLARABELLE USA000068041652

Appraisal: EX 93 @ 7-09 (EEVVE)
 4-09 365D 2X 28370M 5.3% 1515F 3.4% 963P DHIA
 HM All-American Jr. Three-Year-Old 2013
 HM All-American Aged Cow 2016
 Total Performance Cow NGS-Harrisburg 2016



Spring Walk Perfectos Scalet EX-91

4-08 365D 2X 25,870M 5.2% 1,351F* 3.6% 941P
Reserve All-American Four-Year-Old 1997
Granddam of Lot 15



Morning Star N Stripes

All-American Spring Calf 1999
Maternal Sister to Dam of Lot 15

LOT 15 MORNING STAR A SWEETPEA

USA000097018496 A2A2

Born: 04-02-2025 Tattoo LE F131
Consignor: FRIDENSTINE MICHAEL & MARK
NEW LONDON OH

Selling open

PA: -217M -0.04% -19F -0.03% -12P -190CM\$ -186NM\$
+0.5PTAT +0.7UDC +0.3FLC +1.9DPR -1.7PL -14CPI 2.87SCS

Preliminary genomics: -50M -0.02% -6F -0.01% -3P -48NM\$ -47CM\$
2.84SCS +1.1DPR -0.4PL -0.2LIV -1.6HCR +1.3CCR
+0.6PTAT +0.8UDC +0.0FLC +5 CPI

SNIDERS NICLEY NOVAK ANDRE USA000097011822 54GU519 A2A2

12/25 USDA GPTA +1243M -0.16% +28F -0.06% +32P
-1.3DPR +1.0PL +304NM\$ 90NM%ile +297CM\$ 61% Rel
2.96SCS -1.80HCR 36% Rel -1.80CCR 41% Rel
-0.70LIV 37% Rel 0.80GL 43% Rel 0.10EFC 38% Rel
AGA 12/25 PTAT +1.1 +1.0UDC +0.5FLC 60%Rel PTI +73

LANG HAVEN GRUMPY NOVAK USA000068042542 7GU446 A2A2

SNIDERS GARY ANJOLEE USA000078000277

Appraisal: EX 94 @ 7-10 (EEEEEE) 2E
7-02 365D 2X 27930M 2.8% 789F 3.0% 827P DHIA

MORNING STAR TH SERENITY-ET USA000097014773

PA: -1676M +0.09% -65F +0.01% -55P -677CM\$ -676NM\$
-0.2PTAT +0.3UDC +0.1FLC +5.0DPR -4.3PL -100CPI 2.77SCS

CLOVELLY TOP HORNET USA000000575666 29GU781

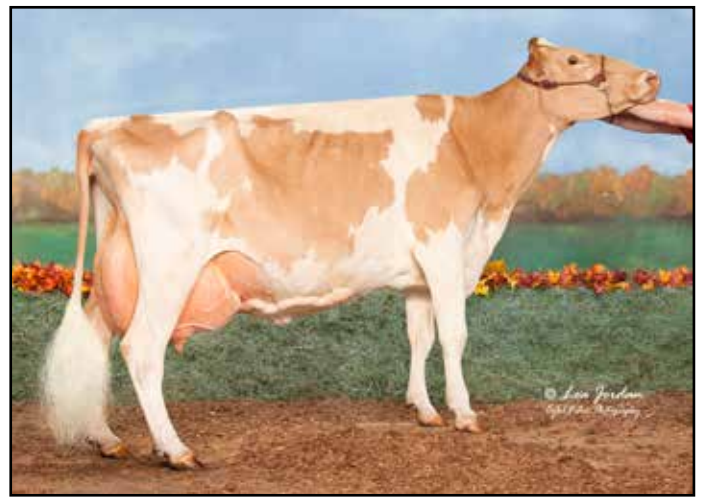
SPRING WALK PERFECTOS SCALET USA000003015440

Appraisal: 91 @ 4-11
1-11 305D 2X 9970M 4.6% 457F 3.6% 359P DHIA
3-06 305D 2X 20200M 5.5% 1109F 3.7% 739P DHIA
4-08 365D 2X 25870M 5.2% 1351F*3.6% 941P DHIA
Reserve All-American Four-Year-Old 1997
Honorable Mention All-American Sr. Three-Year-Old 1996
Reserve Grand Champion Ohio State Fair 1997
Dtrs: MORNING STAR JAKE SATIN 90 @ 4-04
6-00 304D 2X 17040M 5.1% 874F 3.6% 618P DHIA
MORNING STAR N STRIPES
All-American Spring Calf 1999



Villa Crest I Anne EX-94 GSD

206,750M 5.3% 11,037F 3.3% 6,862P Life
Reserve All-American Aged Cow 2004
4th Dam of Lot 16



Villa Crest Peyton Alba EX-92-2E

114,640M 5.1% 5,798F 3.1% 3,550P Life
Nominated All-American Lifetime Prod. Cow 2021
Maternal Family of Lot 16

LOT 16 ELMHURST-JKE JAVA ADORE-P 840003256221243 A2A2

Born: 06-18-2023 Tag # 83
Consignor: HURST, MICHAEL + EMERICH, JERRY & KATHARINE
WAYNESVILLE OH

DHI Herd #31421109 Cow Control 009999
12/25 USDA GPTA -271M +0.00% -13F +0.03% -5P
-0.6DPR +2.0PL -69NM\$ 23NM%ile -62CM\$ 56% Rel
2.86SCS-1.80HCR 28% Rel -1.50CCR 31% Rel
0.40LIV 26% Rel 0.30GL 37% Rel -3.60EFC 28% Rel
0 App 12/25 PTAT +0.4 +0.2UDR +0.3FLC 56%Rel CPI -13
2-06 305D 2X 16409M 5.7% 935F 3.6% 585P Proj. Act.

SPRINGHILL JAVA-ETV-P 840003151591431 200GU123 A2A2

12/25 USDA GPTA +112M -0.06% -6F -0.02% +1P
-3.0DPR -0.3PL -155NM\$ 20NM%ile -155CM\$ 88% Rel
2.87SCS -3.30HCR 44% Rel -4.80CCR 54% Rel
-1.90LIV 33% Rel 0.60GL 88% Rel -3.70EFC 41% Rel
AGA 12/25 PTAT +1.2 +1.6UDC +1.2FLC 86%Rel PTI +8

VILLA CREST ABILITY ALLURE USA000097012520 A2A2

12/25 USDA GPTA -840M +0.20% -7F +0.08% -16P
+2.4DPR +4.1PL +69NM\$ 53NM%ile +86CM\$ 63% Rel
2.82SCS 0.20HCR 26% Rel 2.90CCR 31% Rel
2.40LIV 28% Rel 0.20GL 29% Rel -0.70EFC 28% Rel
2 Rec YDev: -1246M -15F -15P
2 App 12/25 PTAT +0.0 -0.4UDR -0.8FLC 63%Rel CPI -16
Appraisal: +80 @ 2-10 (++F+G)
1-09 311D 2X 12890M 4.9% 630F 3.6% 467P DHIA



Naturally Polled

Bred 3/6/26 to:
Valley Gem Richard McDreamy-ETV 97013125 6GU131 A2A2
Last fresh 12/25/25 (1st lactation)

IDLE GOLD A HERALD-P USA000097002947 54GU499 A2A2

SPRINGHILL MENTOR JAZZY-ET USA000068031553 A2A2

Appraisal: EX 95 @ 6-09 (EEEEEE)
4-06 365D 2X 34720M 5.2% 1799F 3.6% 1260P* DHIA

VILLA CREST ABILITY USA000097007491 A2A2

VILLA CREST YOGI AYL A USA000078002867

Appraisal: VG 89 @ 5-11 (EEVVV)
1-10 362D 2X 17380M 6.0% 1043F 3.6% 625P 96
2-11 352D 2X 22770M 6.3% 1432F 3.6% 809P 96
4-00 327D 2X 20610M 5.6% 1145F 3.6% 734P 95
4-11 299D 2X 20180M 5.7% 1144F 3.4% 695P 96
5-10 359D 2X 23330M 5.8% 1362F 3.4% 794P 97
7-01 255D 2X 11770M 4.9% 572F 3.6% 425P 70
1954D 116040M 5.8% 6698F 3.5% 4082P LIFE
3rd Lifetime Production Cow NGS-Louisville 2021

3D: VILLA CREST MM ANNE ROSE-ET USA000068028685

4D: VILLA CREST I ANNE USA000003056840

Appraisal: 94 @ 8-01 (94/92) Gold Star Dam - 2007
7-00 365D 2X 30180M 5.1% 1525F 3.2% 964P 93
3354D 206750M 5.3% 11037F 3.3% 6862P LIFE
Reserve All-American & Res. Jr. All-American Aged Cow 2004
Junior All-American Four-Year-Old 2002
Nominated All-American Aged Cow & Total Performance Cow 2005
Grand Champion NJS-Madison 2002 & 2004

5D: VILLA CREST CAP ARIANA USA000003042344

Appraisal: 88 @ 3-06

Villa Crest Answer Ariana EX-90

5-00 365D 2X 27,620M 5.1% 1,419F 3.2% 884P
Nominated All-American Five-Year-Old 2019
Maternal Family of Lot 16



Broadview Levi Arlene VG-88 CAN
 3-03 365D 2X 23,309M 4.6% 1,065F 3.5% 820P
 Maternal Sister to Granddam of Lot 17

LOT 17 COUNTRY LANE WIPEOUT CARROT USA000097019053

Born: 06-07-2025 Tag # 129
 Consignor: YODER ADEN
 MILLERSBURG OH

A2A2 by extended parentage

UP THE CREEK LONDON AUDREY 840003210758207 6GU122 A2A2

UP THE CREEK AUDREYS WIPEOUT USA000097014511 6GU137 A2A2

12/25 USDA GPTA +1M -0.05% -9F -0.01% -1P
 +0.3DPR +1.8PL +9NM\$ 45NM%ile +8CM\$ 56% Rel
 2.99SCS +1.5SCR -0.80HCR 29% Rel 0.00CCR 31% Rel
 0.30LIV 29% Rel 0.40GL 38% Rel -3.70EFC 28% Rel
 AGA 12/25 PTAT +1.1 +2.0UDC +1.3FLC 56%Rel PTI +36

UP THE CREEK DANIEL WHIPLASH USA000097009580 A2A2

Appraisal: EX 92 @ 4-04 (EEEEEE)
 3-07 365D 2X 24250M 4.4% 1065F 3.5% 851P DHIA

COUNTRY LANE NEWTON CINDY USA000097015150

RIPLEY FARMS JAG NEWTON 840003130939306 7GU470 A2A2

BROADVIEW CUDDLES CAN000012038373

Appraisal: VG 87 @ 7-06 (EEVVV)

3D: BROADVIEW ARLIE CAN9989567 A2A2

Appraisal: VG 85 @ 4-10 CAN
 10-09 365D 2X 31601M 4.5% 1433F 3.2% 1014P CAN
 2793D 194829M 4.5% 8697F 3.2% 6232P LIFE

4D: BROADVIEW WASABI CAN9648387

Appraisal: GP 83 @ 3-10 CAN
 4-09 365D 2X 20011M 5.4% 1087F 3.5% 694P CAN

5D: BROADVIEW SALSA CAN7868037

Appraisal: GP 80 @ 5-07 CAN
 3-00 365D 2X 20344M 4.2% 844F 2.9% 586P CAN

6D: BROADVIEW POPPY 2 CAN8280391

Appraisal: VG 86 @ 3-05 CAN
 3-04 365D 2X 18314M 5.1% 941F 3.5% 650P CAN

7D: BROADVIEW KARLEY CAN10033660

Appraisal: GP 83 @ 3-04 CAN

8D: BROADVIEW ECHO CAN200653

Appraisal: VG 85 @ 4-07 CAN
 4-06 347D 2X 23554M 4.1% 974F 3.2% 761P CAN

9D: BROADVIEW CATHY 2 CAN198070

Appraisal: GP 83 @ 3-02 CAN

10D: BROADVIEW ZAP CAN194822

Appraisal: VG 85 @ 6-07 CAN
 8-05 365D 2X 18411M 4.4% 807F 3.6% 653P
 2463D 103838M 4.6% 4813F 3.5% 3635P LIFE

LOT 18 GRIM FARM SAVAGE 2531 BEE USA000097019330 A2A2

Born: 12-02-2025 Tattoo RE AC31
Consignor: GRIM FARM LLC
NEW LONDON OH

Certified Organic & Grass-Fed!

HOLLOW VIEW STORM ATLAS USA000068023358

PA: -402M +0.12% +0F +0.04% -7P +29CM\$ +23NM\$
-0.3PTAT -0.2UDC -0.1FLC +1.8DPR +0.5PL +2CPI 3.08SCS

COULEE CREST PILOT LAVA-ET USA000097000835
Appraisal: EX 92 @ 9-05 (EEEEEE) 3E
6-06 365D 2X 33320M 5.4% 1805F 3.6% 1206P DHIA

COULEE CREST SAVAGE-ETV 840003257821053 200GU129 A2A2

12/25 USDA GPTA -268M +0.13% +9F +0.07% +3P
+1.2DPR +1.7PL +120NM\$ 50NM%ile +136CM\$ 60% Rel
2.96SCS -0.90HCR 29% Rel 1.50CCR 34% Rel
1.60LIV 29% Rel 1.20GL 35% Rel -0.60EFC 29% Rel
AGA 12/25 PTAT +0.4 +0.9UDC +0.5FLC 58%Rel PTI +41

LILY LANE T PENNY PATRIOT USA00000601448 7GU309

GR-GRIMS BEA BOUNTY 224 USA000068048740

Appraisal: EX 91 @ 7-05 (EEEEV)
2-00 318D 2X 11020M 4.7% 518F 3.5% 391P 94
3-00 358D 2X 15110M 5.0% 762F 3.7% 566P 97
4-02 309D 2X 11560M 4.9% 568F 3.8% 437P 96
5-01 297D 2X 9350M 4.6% 430F 3.9% 362P 96
6-04 264D 2X 11820M 5.0% 594F 3.3% 393P 89
7-03 307D 2X 14260M 4.3% 613F 3.6% 516P 97

GRIM FARM BOUNTY PATRIOT 916 USA000097012292

12/25 USDA PTA -536M +0.10% -9F +0.01% -16P
+2.3DPR -0.8PL -75NM\$ 23NM%ile -79CM\$ 42% Rel
3.20SCS 1.50HCR 10% Rel 3.50CCR 22% Rel
3.80LIV 18% Rel -1.30GL 15% Rel 1.90EFC 18% Rel
4 Rec YDev: -679M -6F -16P
1 App 12/25 PTAT -0.9 -1.2UDR -0.6FLC 39%Rel CPI -33
Appraisal: + 80 @ 5-09 (++++GG)
3-01 300D 2X 9620M 4.7% 450F 3.6% 342P 98
4-02 305D 2X 10520M 5.0% 526F 3.4% 353P 98
5-04 320D 2X 12340M 4.8% 589F 3.5% 426P 98
6-04 305D 2X 11279M 4.7% 535F 3.4% 385P Proj. Act.

3D: PR-GRIM RON 1027 BEA USA000068048690

Appraisal: 84 @ 5-07 (84/82)

LOT 19 GRIM FARM SPARKY 2528 CHEER USA000097019073 A2A2

Born: 08-14-2025 Tattoo RE AC28
Consignor: GRIM FARM LLC
NEW LONDON OH

Certified Organic & Grass-Fed!

SPRINGHILL JAVA-ETV-P 840003151591431 200GU123 A2A2

PA: +63M -0.04% -5F +0.02% +6P -12CM\$ -22NM\$
+0.7PTAT +0.6UDC +0.7FLC -0.4DPR +0.4PL +16CPI 2.81SCS

GR-KADENCE SHERLOCK SPICED LATTE USA000097007125 A2A2

Appraisal: EX 94 @ 6-07 (EEEEEE) 2E
5-10 365D 2X 33580M 4.6% 1558F 3.8% 1266P DHIA

KADENCE JAVA SPARTA-P USA000097013057 6GU130 A2A2

12/25 USDA GPTA +714M -0.12% +11F +0.00% +24P
-2.2DPR +0.1PL +31NM\$ 45NM%ile +39CM\$ 60% Rel
2.80SCS -2.20HCR 29% Rel -3.20CCR 32% Rel
-1.60LIV 27% Rel 1.40GL 40% Rel -1.10EFC 28% Rel
AGA 12/25 PTAT +1.5 +1.5UDC +1.6FLC 59%Rel PTI +61

GOLDEN I LOCKLEY-ET-P 840003200644351 54GU508 A2A2

GRIM FARM 2017 JAGUAR CHERRY USA000097010046

Appraisal: + 80 @ 2-06 (G+GG+)

GRIM FARM 2222 CHERIE USA000097014262

12/25 USDA PTA -588M +0.04% -20F +0.04% -13P
+1.5DPR +0.6PL -74NM\$ 23NM%ile -63CM\$ 40% Rel
2.81SCS-0.20HCR 14% Rel 1.40CCR 18% Rel
2.20LIV 12% Rel 0.60GL 27% Rel -3.00EFC 14% Rel
1 Rec YDev: -1052M -51F -29P
1 App 12/25 PTAT -0.1 -0.3UDR -0.3FLC 33%Rel CPI -31
Appraisal: + 81 @ 3-02 (++++G)
2-00 299D 2X 5700M 4.8% 271F 3.6% 208P 96
2-11 305D 2X 9291M 4.6% 430F 3.5% 323P Proj. Act.

LOT 20 PINE GROVE SAVAGE OPERA USA000097019134

Born: 09-18-2025 Tag # 784
Consignor: MILLER REUBEN M
SUGARCREEK OH

A2A2 by extended parentage

PA: -44M +0.06% +8F +0.05% +6P +91CM\$ +81NM\$
+0.3PTAT +0.6UDC +0.1FLC +0.6DPR +0.9PL +29CPI 2.97SCS

HOLLOW VIEW STORM ATLAS USA000068023358

COULEE CREST SAVAGE-ETV 840003257821053 200GU129 A2A2

12/25 USDA GPTA -268M +0.13% +9F +0.07% +3P
+1.2DPR +1.7PL +120NM\$ 50NM%ile +136CM\$ 60% Rel
2.96SCS -0.90HCR 29% Rel 1.50CCR 34% Rel
1.60LIV 29% Rel 1.20GL 35% Rel -0.60EFC 29% Rel
AGA 12/25 PTAT +0.4 +0.9UDC +0.5FLC 58%Rel PTI +41

COULEE CREST PILOT LAVA-ET USA000097000835

Appraisal: EX 92 @ 9-05 (EEEEEE) 3E
6-06 365D 3X 33320M 5.4% 1805F 3.6% 1206P DHIA

PINE GROVE MICHEL OCTAVE USA000097016035

PA: +180M -0.01% +7F +0.02% +9P +46CM\$ +41NM\$
+0.1PTAT +0.2UDC -0.4FLC +0.0DPR +0.0PL +14CPI 2.98SCS
Appraisal: VG 85 @ 2-03 (+VVV+)
2-01 305D 2X 10841M 4.7% 510F 3.6% 389P Proj. Act.

GLADHEART MICHELANGELO-ET 840003206246837 54GU502 A2A2

PINE GROVE JAG ORPHA USA000097013206 A2A2

Appraisal: VG 85 @ 4-03 (VV+++)
1-11 332D 2X 12660M 5.0% 632F 3.6% 461P 96
3-00 335D 2X 16020M 5.1% 821F 3.7% 589P 96
4-00 305D 2X 14694M 5.3% 773F 3.7% 550P Proj. Act.

3D: PINE GROVE CORDELL OHIO USA000078005369 A2A2

Appraisal: VG 85 @ 5-02 (VVG+V)
6-03 365D 2X 20040M 4.8% 964F 3.6% 716P DHIA

4D: PINE GROVE GEO OCHER USA000068048778 A2A2

Appraisal: 86 @ 4-05 (87/86)
3 App 12/25 PTAT +0.2 -0.1UDR -0.4FLC 71%Rel CPI +40
4-00 323D 2X 16430M 5.0% 815F 3.6% 592P 97
Dtr: PINE GROVE BO ODESSA 90 @ 7-06 (90/88)
6-00 314D 2X 16180M 4.9% 795F 3.6% 581P 96

LOT 21 MAPLE BOTTOM RICHARD AUSTRALIA 840003301014106

Born: 12-23-2025 Tag # 892
Consignor: BAKER VICTORIA L & MICHAEL S
SCOTTDALE PA

A2A2 by extended parentage

PA: +817M -0.13% +16F -0.03% +24P +102CM\$ +106NM\$
-0.3PTAT -0.3UDC +0.0FLC +0.1DPR -0.9PL +38CPI 3.12SCS

COULEE CREST GRUMPY LEGEND-ET USA000068045040 7GU451 A2A2

DAIRYMAN LEGEND RICHARD 840003009973860 49GU143 A2A2

12/25 USDA GPTA +1172M -0.19% +20F -0.01% +39P
-0.4DPR -0.8PL +149NM\$ 50NM%ile +151CM\$ 92% Rel
3.17SCS 2.90HCR 55% Rel -0.40CCR 69% Rel
-2.00LIV 46% Rel -2.00GL 95% Rel 11.60EFC 53% Rel
AGA 12/25 PTAT +0.2 +0.0UDC -0.2FLC 91%Rel PTI +62

DAIRYMAN SPIDER ROSEOIL USA000066817416

Appraisal: 90 @ 4-03 (90/87)
4-10 365D 3X 33190M 5.0% 1669F 3.6% 1207P* DHIA

MAPLE BOTTOM VENGEANCE ALABAMA-TW 840003128833472

2 App 12/25 PTAT -0.7 -0.6UDR +0.2FLC 44%Rel

Appraisal: + 82 @ 3-07 (++G++)
3-00 302D 3X 13190M DHIA*

*Robot-derived record - no component testing

Dtr: MAPLE BOTTOM VISION ALGERIA 81 @ 2-00 (81/84)

MARODORE RANDALLS VENGEANCE USA000097006605 6GU113 A2A2

OAKDALE NAVAJO ARIZONA USA000007593518 A2A2

Appraisal: + 80 @ 5-04 (++GG+)
Dtrs: MAPLE BOTTOM FREEDOM AMERICA 85 @ 5-00 (86/78)
MAPLE BOTTOM RANDALL ALASKA 87 @ 4-00 (88/83)

LOT 22 BOK KAPTION JEN JANE USA000097018647

Born: 06-03-2025 Tattoo LE 35SB RE 35SB
Consignor: BOK RENEE & SARA
DEFIANCE OH

LANG HAVEN JUDGMENT NET WORTH-ET USA000078006591 14GU331 A2A2

PA: +166M +0.04% +15F -0.02% +3P +206CM\$ +211NM\$
+0.1PTAT +0.2UDC -0.2FLC -0.3DPR +2.5PL +21CPI 3.06SCS

LANG HAVEN NOVAK KP-ET USA000097007795 A2A2

Appraisal: + 84 @ 4-10 (VV+V+)
3-03 365D 2X 14910M 5.2% 769F 3.5% 527P DHIA

LANG HAVEN NETWORK KAPTION 840003006461784 6GU120 A2A2

12/25 USDA GPTA -104M +0.16% +23F +0.02% +0P
+0.2DPR +4.4PL +322NM\$ 90NM%ile +326CM\$ 78% Rel
2.99SCS -0.20HCR 39% Rel 0.20CCR 42% Rel
1.60LIV 31% Rel -1.90GL 85% Rel -1.50EFC 36% Rel
AGA 12/25 PTAT +0.4 +1.1UDC +0.4FLC 74%Rel PTI +51

DAIRYMAN TOBY PHARMER-ET 840003200731885 6GU110 A2A2

RIVERWOOD GARY JELLY USA000097004150

Appraisal: + 80 @ 2-08 (++FG+)

RIVERWOOD PHARM JENNY USA000097013213

12/25 USDA PTA +435M -0.08% +6F -0.06% +5P
-0.8DPR +0.6PL +99NM\$ 60NM%ile +86CM\$ 45% Rel
3.12SCS-0.10HCR 18% Rel -0.90CCR 25% Rel
-0.70LIV 16% Rel -0.50GL 33% Rel 2.10EFC 18% Rel
2 Rec YDev: +1582M +8F +10P

3D: RIVERWOOD AARON JANAI USA000068038999

Appraisal: 87 @ 4-04 (86/83)
1-11 350D 2X 18740M 4.6% 863F 3.3% 614P 97

4D: RIVERWOOD MARKSMAN JERRI USA000068043082

Appraisal: + 80 @ 10-10 (EPPP+)
9-03 365D 2X 16850M 4.5% 757F 3.3% 554P DHIA
2748D 110990M 4.9% 5444F 3.6% 3998P LIFE

2nd Spring Yearling NE Indiana Dairy Show 2023