

# GOLDEN FUTURE



# EMBRYO SALE

*Hosted by GMS*

*October 30, 2025 on [Cowbuyer.com](https://www.cowbuyer.com)*

# **GOLDEN FUTURE EMBRYO SALE**

*hosted by Guernsey Marketing Service*

**October 30, 2025 on Cowbuyer.com**

*Bidding closes 8:00pm EST on October 30.*

- All sales are final.
- Payment is due at the end of the sale.
- A 3% convenience fee will be charged for all credit card payments.
- Confirmation of payment will be sent to consignor and purchaser within one week of sale.
- No embryos will ship prior to a full payment being received.
- Buyer is responsible for the coordination, cost, and liability of shipment.
- All embryos are for domestic shipment only unless otherwise specified.
- Final bid must meet the seller's reserve price to be considered sold.
- Check each lot for additional terms.

## **Sales Staff**

*Guernsey Marketing Service*

Robin Alden 614.339.5390

ralden@usguernsey.com

*Payment - Guernsey Marketing Service*

Rita Rittgers 614.339.5396

accounting@usguernsey.com

*Monday - Thursday, 9:00am - 2:00pm EST*

*Cowbuyer*

Aaron Ray Tompkins 336.363.4639



**View and bid online at  
[www.cowbuyer.com](http://www.cowbuyer.com)**

**Aaron Ray Tompkins 336.363.4639**



**Buyers must be pre-registered.**

Auction opens the week of Oct. 27 and closes

Oct. 30 with an auto-extend soft close.

Contact Robin Alden if you are unable  
to monitor the auction during this time:  
614.339.5390 | ralden@usguernsey.com



**Skoda Grove Legend Roxy EX-92**  
 2-05 365D 2X 31,380M 5.4% 1,710F\* 3.6% 1,120P  
 #3 CPI Cow August 2025  
 Dam of Lot 1



**Millborne Faria Cordell River EX-90**  
 105,050M 5.1% 5,386F 3.1% 3,213P Lifetime  
 Granddam of Lot 1

**LOT 1 4 #1 LEGACY X ROXY IVF EMBRYOS**

Consignor: SKODA RYAN & CRYSTIL LEE  
 CRARYVILLE NY  
 518-774-1085 skod14@yahoo.com

PA: +666M -0.03% +27F +0.01% +25P +87CM\$ +80NM\$  
 +1.5PTAT +2.2UDC +1.6FLC -2.6DPR -0.6PL +82CPI 3.03SCS

- Four (4) #1 IVF embryos
- Sexed semen used for females
- Resulting calves would rank #13 on the CPI Heifer List - August 2025
- Resulting calves would rank in top 50 PTAT Heifers - August 2025
- Located at TransOva, MD
- Embryos must be in buyer's possession within 60 days of sale

**KADENCE JAVA LEGACY USA000097015725 788GU13 A2A2**

08/25 USDA GPTA +260M -0.05% +3F -0.02% +6P  
 -2.6DPR +0.0PL -90NM\$ 19NM%ile -92CM\$ 60% Rel  
 2.98SCS -2.60HCR 29% Rel -4.30CCR 34% Rel  
 -1.80LIV 28% Rel 0.70GL 41% Rel -3.30EFC 30% Rel  
 AGA 08/25 PTAT +1.5 +2.1UDC +2.3FLC 60%Rel PTI +44

**SPRINGHILL JAVA-ETV-P 840003151591431 200GU123 A2A2**

**KADENCE FAMES LOVELY USA000097003682 A2A2**

Appraisal: EX 96 @ 8-00 (EEEE)  
 6-02 365D 2X 31030M 5.2% 1604F 3.6% 1129P DHIA

**SKODA GROVE LEGEND ROXY 840003215003788 A1A2**

08/25 USDA GPTA +1072M +0.00% +50F +0.04% +44P  
 -2.6DPR -1.1PL +250NM\$ 86NM%ile +265CM\$ 70% Rel  
 3.07SCS 0.40HCR 36% Rel -2.30CCR 46% Rel  
 -3.90LIV 36% Rel -0.30GL 46% Rel 4.50EFC 37% Rel  
 2 Rec YDev: +4922M +232F +186P  
 3 App 08/25 PTAT +1.4 +2.2UDR +0.8FLC 60%Rel CPI +119  
 Appraisal: EX 92 @ 4-06 (EEVEE)  
 2-05 365D 2X 31380M 5.4% 1710F\*3.6% 1120P\* 96  
 4-00 305D 2X 33526M 5.2% 1744F 3.4% 1139P Proj. Act.  
 #3 CPI Cow August 2025

**COULEE CREST GRUMPY LEGEND-ET USA000068045040 7GU451 A2A2**

**MILLBORNE FARIA CORDELL RIVER 840003005473277 A1A1**

Appraisal: EX 90 @ 3-03 (VEVVE)  
 2-01 307D 2X 23970M 4.1% 992F 2.9% 707P 95  
 3-01 306D 2X 27690M 4.6% 1264F 3.1% 867P 98  
 4-00 305D 2X 34860M\*6.0% 2084F\*2.9% 1019P 98  
 1151D 105050M 5.1% 5386F 3.1% 3213P LIFE  
 2nd Sr. Two-Year-Old New England Classic 2019  
 2nd Sr. Three-Year-Old Northeast Fall Show 2020  
 3rd Sr. Three-Year-Old Guernsey Gold Showcase 2020  
 Dtrs: SKODA GROVE LATIMER RUBY 88 @ 5-10 (90/82)  
 2-11 365D 2X 27937M 5.6% 1552F 3.2% 890P 97  
 #27(T) CPI Cow August 2025  
 SKODA GROVE DESIGN REMI-ETV 82 @ 2-05 (82/79)  
 #91(T) CPI Cow August 2025  
 Res. Intermediate Champion NE Spring & NE Classic Jr. Shows 2025

Dam of 5 of the top 60 CPI Heifers - August 2025  
 Nominated Junior All-American Winter Calf 2021  
 Grand Champion Northeast Spring Jr. Show 2025

1st Sr. Two-Year-Old Guernsey Gold Showcase 2023  
 Dtrs: SKODA GROVE DESIGN ROSALEE-ETV

2-06 305D 2X 26954M 5.3% 1436F 3.3% 898P Proj. Act.  
 SKODA GROVE HURRICANE REGAL-ETV

2nd Fall Yearling Guernsey Gold Showcase 2025  
 SKODA GROVE TORPEDO RILEY-ETV

2nd Spring Calf New England Classic 2025  
 SKODA GROVE TORPEDO REBECKA-ETV

#9 CPI Heifer August 2025

**3D: MILLBORNE FARIA YOGIBEAR RACHEL USA000068038893**

Appraisal: 88 @ 4-05 (90/83)  
 3-11 365D 2X 28590M 4.0% 1133F 3.0% 855P DHIA

**4D: MAPLEHURST ROYALTY RUBY-TRI CAN000009594145**

Appraisal: 89 @ 3-10 (90/86)  
 2-06 365D 2X 23260M 4.2% 980F 2.9% 677P DHIA  
 Member, Reserve All-American Produce of Dam 2010

**5D: MAPLEHURST LEWIS'S REGINA CAN000010033559**

Appraisal: VG 87 @ 6-10 (85/85) CAN  
 5-11 365D 2X 24553M 3.8% 937F 3.2% 794P CAN  
 1868D 112334M 3.8% 4277F 3.2% 3640P LIFE

**6D: MAPLEHURST BJ REJOYCE ET CAN200740**

Appraisal: VG 85 @ 4-03 (85/80) CAN

**7D: LAESCHLAND MERCURY BRIDGET CAN199486**

Appraisal: VG 86 @ 3-00 (85/86) CAN  
 3-11 305D 2X 21740M 4.4% 955F 3.6% 789P CAN

**8D: LAESCHLAND TS BIDDY USA000002845925**

Appraisal: 94 @ 9-09 Gold Star Dam - 1988  
 9-03 365D 2X 28930M 4.5% 1298F 3.4% 995P DHIA  
 3178D 167220M 4.9% 8262F 4.0 LIFE



**Dairyman Theo 4928 Dia-ETV VG-87**  
2-01 305D 3X 20,460M 5.2% 1,057F 3.5% 707P  
Former #1 CPI Cow  
Dam of Lots 2 & 3  
Maternal Sister to Lot 5  
Maternal Sister to Dam of Lot 4

### LOT 2 3 #1 JETHRO X DIA IVF EMBRYOS

Consignor: HOARDS DAIRYMAN FARM  
FORT ATKINSON WI  
920-728-4822 hdfarm@hoards.com

PA: +88M +0.09% +19F +0.03% +7P +240CM\$ +232NM\$  
+1.3PTAT +2.4UDC +1.0FLC -0.1DPR +3.5PL +81CPI 2.90SCS

#### DAIRYMAN TSUNAMI JETHRO 840003240506907 6GU134 A2A2

08/25 USDA GPTA -78M +0.07% +9F +0.02% +0P  
+0.7DPR +3.9PL +151NM\$ 57NM%ile +155CM\$ 58% Rel  
2.96SCS 0.40HCR 31% Rel 1.30CCR 32% Rel  
2.10LIV 27% Rel 0.10GL 40% Rel 1.50EFC 28% Rel  
AGA 08/25 PTAT +1.2 +1.6UDC +0.0FLC 57%Rel PTI +49

#### DAIRYMAN THEO 4928 DIA-ETV 840003218931950 A2A2

08/25 USDA GPTA +254M +0.10% +29F +0.03% +14P  
-0.8DPR +3.0PL +313NM\$ 92NM%ile +325CM\$ 66% Rel  
2.83SCS 0.20HCR 32% Rel -0.30CCR 37% Rel  
1.70LIV 28% Rel 0.90GL 43% Rel 2.70EFC 30% Rel  
1 Rec YDev: +1660M +100F +62P  
2 App 08/25 PTAT +1.3 +3.2UDR +2.0FLC 71%Rel CPI +112  
Appraisal: VG 87 @ 2-09 (VVVVV)  
2-01 305D 3X 20460M 5.2% 1057F 3.5% 707P 103  
Former #1 CPI Cow

### LOT 3 4 #1 MAVERICK X DIA IVF EMBRYOS

Consignor: HOARDS DAIRYMAN FARM  
FORT ATKINSON WI  
920-728-4822 hdfarm@hoards.com

PA: +164M +0.12% +28F +0.02% +9P +359CM\$ +350NM\$  
+0.9PTAT +2.4UDC +0.9FLC +0.7DPR +3.5PL +91CPI 2.83SCS

#### SMITHFIELD CRAIG MAVERICK-ET 840003239855878 6GU127 A2A2

08/25 USDA GPTA +73M +0.14% +27F +0.01% +4P  
+2.1DPR +3.9PL +387NM\$ 95NM%ile +393CM\$ 60% Rel  
2.82SCS -1.2SCR -0.10HCR 36% Rel 2.70CCR 35% Rel  
3.70LIV 28% Rel 0.50GL 42% Rel 2.80EFC 30% Rel  
AGA 08/25 PTAT +0.4 +1.5UDC -0.3FLC 60%Rel PTI +70

#### DAIRYMAN THEO 4928 DIA-ETV 840003218931950 A2A2

Appraisal: VG 87 @ 2-09 (VVVVV)  
2-01 305D 3X 20460M 5.2% 1057F 3.5% 707P 103  
Former #1 CPI Cow

- Three (3) #1 IVF embryos
- Sexed semen used for females
- Resulting calves will be A2A2 by parentage
- Resulting calves would rank in the top 15 CPI Heifers - August 2025
- Located at Sunshine Genetics, WI
- Embryos must be in buyer's possession within 60 days of sale

#### COULEE CREST TSUNAMI-ETV 840003214098840 200GU124 A2A2

#### DAIRYMAN PROFIT 3825 JAPAN 840003143321971 A2A2

Appraisal: EX 90 @ 5-06 (EEVEE) Gold Star Dam - 2023  
4-03 365D 3X 23870M 5.5% 1315F 3.6% 868P DHIA

#### RIPLEY FARMS NETWORK C THEO 840003146571505 6GU112 A2A2

#### DAIRYMAN NOVAK 3311 DINERO 840003134201911 A2A2

Appraisal: + 84 @ 3-07 (VVEV+)  
2-08 365D 3X 26260M 4.4% 1168F 3.7% 969P DHIA

- Four (4) #1 IVF embryos
- Sexed semen used for females
- Resulting calves will be A2A2 by parentage
- Resulting calves would rank in the top 10 CPI Heifers - August 2025
- Located at Sunshine Genetics, WI
- Embryos must be in buyer's possession within 60 days of sale

#### DAIRYMAN CHARMING CRAIG 840003200731886 6GU111A2A2

#### SMITHFIELD JORDY MOODY 840003203117601

Appraisal: + 83 @ 5-06 (EVV+G) Gold Star Dam - 2024  
4-11 365D 3X 25690M 5.0% 1274F 3.2% 827P DHIA

#### RIPLEY FARMS NETWORK C THEO 840003146571505 6GU112 A2A2

#### DAIRYMAN NOVAK 3311 DINERO 840003134201911 A2A2

Appraisal: + 84 @ 3-07 (VVEV+)  
2-08 365D 3X 26260M 4.4% 1168F 3.7% 969P DHIA



**Dairyman Coin 5200 Delfina-ET VG-86**  
 2-00 305D 3X 16,090M 4.7% 761F 3.4% 553P  
 #40(T) CPI Cow August 2025  
 Dam of 2GU149 DEFENDER @ GGS  
 Dam of Lot 4  
 Maternal Sister to Lot 5  
 Maternal Sister to Dam of Lots 2 & 3

**LOT 4 3 #1 VERNON X DELFINA IVF EMBRYOS**

Consignor: HOARDS DAIRYMAN FARM  
 FORT ATKINSON WI  
 920-728-4822 hdfarm@hoards.com

PA: +172M +0.03% +13F +0.02% +9P +205CM\$ +198NM\$  
 +1.1PTAT +1.7UDC +1.0FLC +0.5DPR +2.3PL +65CPI 2.89SCS

- Three (3) #1 IVF embryos
- Embryos are not sexed
- Resulting calves will be A2A2 by parentage
- Resulting heifers would rank in the top 100 CPI Heifers - August 2025
- Located at Sunshine Genetics, WI
- Embryos must be in buyer's possession within 60 days of sale

**RHG VILLA LONDON VERNON-ETV 840003213010574 94GU960 A2A2**

08/25 USDA GPTA +115M +0.07% +18F +0.05% +13P  
 -0.6DPR +1.2PL +172NM\$ 61NM%ile +186CM\$ 62% Rel  
 2.96SCS 0.40HCR 32% Rel -0.40CCR 39% Rel  
 -0.10LIV 32% Rel 0.70GL 42% Rel -1.20EFC 32% Rel  
 AGA 08/25 PTAT +0.8 +1.0UDC +0.8FLC 61%Rel PTI +54

**GOLDEN I LONDON USA000068039423 54GU481 A2A2**

**ROZELYN AARON VILLA USA000068042242 A2A2**  
 Appraisal: EX 94 @ 10-05 (EEEE) 2E Gold Star Dam - 2016  
 5-07 365D 2X 26110M 5.3% 1384F 3.8% 997P 101

**DAIRYMAN COIN 5200 DELFINA-ET 840003238445412 A2A2**

08/25 USDA GPTA +229M -0.02% +7F -0.02% +5P  
 +1.6DPR +3.3PL +223NM\$ 83NM%ile +224CM\$ 68% Rel  
 2.82SCS 1.50HCR 32% Rel 2.20CCR 36% Rel  
 0.80LIV 31% Rel 0.10GL 44% Rel 4.50EFC 32% Rel  
 2 Rec YDev: -623M -19F -24P  
 1 App 08/25 PTAT +1.3 +2.3UDR +1.2FLC 69%Rel CPI +75  
 Appraisal: VG 86 @ 2-05 (VV+VV)  
 2-00 305D 3X 16090M 4.7% 761F 3.4% 553P 104  
 #40(T) CPI Cow August 2025  
 Dam of 2GU149 DEFENDER at Guernsey Gold Sires

**JENS GOLD COPPER COIN 840003134140210 6GU100 A2A2**

**DAIRYMAN NOVAK 3311 DINERO 840003134201911 A2A2**  
 Appraisal: + 84 @ 3-07 (VVEV+)  
 2-08 365D 3X 26260M 4.4% 1168F 3.7% 969P DHIA  
 Dtrs: DAIRYMAN THEO 4928 DIA-ETV 87 @ 2-09 (88/85)  
 2-01 305D 3X 20460M 5.2% 1057F 3.5% 707P 103  
 Former #1 CPI Cow  
 DAIRYMAN THEO 4929 DAMA-ETV 82 @ 2-09 (82/78)  
 1-09 305D 3X 15260M 5.1% 772F 3.5% 533P 104  
 DAIRYMAN CRAIG 5141 DEFINIDO-ET 88 @ 3-05 (88/86)  
 #137(T) CPI Cow August 2025  
 DAIRYMAN JORDY 5171 DOCENA-ET 81 @ 3-01 (81/78)  
 1-10 365D 3X 19430M 4.4% 856F 3.5% 671P DHIA  
 #27(T) CPI Cow August 2025



**Dairyman Theo 4928 Dia-ETV VG-87**

2-01 305D 3X 20,460M 5.2% 1,057F 3.5% 707P

Maternal Sister to Lot 5

Dam of Lots 2 & 3



**Dairyman Coin 5200 Delfina-ET VG-86**

2-00 305D 3X 16,090M 4.7% 761F 3.4% 553P

Maternal Sister to Lot 5

Dam of Lot 4

**LOT 5 3 #1 CHECKMATE X DINERO IVF EMBRYOS**

Consignor: HOARDS DAIRYMAN FARM

FORT ATKINSON WI

920-728-4822 hdfarm@hoards.com

PA: +806M -0.08% +23F +0.00% +28P +189CM\$ +184NM\$  
+0.9PTAT +1.3UDC +0.8FLC -0.2DPR +0.9PL +81CPI 3.01SCS

- Three (3) #1 IVF embryos
- Reverse sorted semen used for Females
- Resulting calves will be A2A2 by parentage
- Resulting calves would rank in the top 15 CPI Heifers - August 2025
- Located at Sunshine Genetics, WI
- Embryos must be in buyer's possession within 60 days of sale

**COULEE CREST RICHARD CHECKMATE 840003208361479 6GU116 A2A2**

08/25 USDA GPTA +674M -0.11% +12F +0.02% +26P  
+1.8DPR +2.6PL +232NM\$ 71NM%ile +240CM\$ 82% Rel  
3.01SCS +0.2SCR 2.40HCR 41% Rel 2.20CCR 45% Rel  
1.10LIV 31% Rel 1.00GL 90% Rel 6.00EFC 38% Rel  
AGA 08/25 PTAT +0.2 +0.0UDC +0.0FLC 81%Rel PTI +62

**DAIRYMAN LEGEND RICHARD 840003009973860 49GU143 A2A2**

**COULEE CREST LOGO CHARLOTTE-ET USA000097002910 A2A2**

Appraisal: + 83 @ 2-08 (VVGVG)  
1-11 348D 3X 23670M 5.2% 1223F 3.0% 711P 93

**DAIRYMAN NOVAK 3311 DINERO 840003134201911 A2A2**

08/25 USDA GPTA +938M -0.05% +34F -0.02% +29P  
-2.2DPR -0.8PL +136NM\$ 68NM%ile +137CM\$ 70% Rel  
3.01SCS-2.20HCR 34% Rel -2.50CCR 42% Rel  
-1.60LIV 35% Rel 0.90GL 43% Rel -0.30EFC 35% Rel  
1 Rec YDev: +3506M +117F +112P  
2 App 08/25 PTAT +1.5 +2.6UDR +1.5FLC 75%Rel CPI +100  
Appraisal: + 84 @ 3-07 (VVEV+)  
2-08 365D 3X 26260M 4.4% 1168F 3.7% 969P DHIA  
Dtrs: DAIRYMAN THEO 4928 DIA-ETV 87 @ 2-09 (88/85)  
2-01 305D 3X 20460M 5.2% 1057F 3.5% 707P 103  
Former #1 CPI Cow

**LANG HAVEN GRUMPY NOVAK USA000068042542 7GU446 A2A2**

**GR-DAIRYMAN SUPERMAN 2574 DAIRY 840003124608036**

DAIRYMAN THEO 4929 DAMA-ETV 82 @ 2-09 (82/78)  
1-09 305D 3X 15260M 5.1% 772F 3.5% 533P 104  
DAIRYMAN CRAIG 5141 DEFINIDO-ET 88 @ 3-05 (88/86)  
#137(T) CPI Cow August 2025  
DAIRYMAN JORDY 5171 DOCENA-ET 81 @ 3-01 (81/78)  
1-10 365D 3X 19430M 4.4% 856F 3.5% 671P DHIA  
#27(T) CPI Cow August 2025  
DAIRYMAN COIN 5200 DELFINA-ET 86 @ 2-05 (86/86)  
2-00 305D 3X 16090M 4.7% 761F 3.4% 553P 104  
#40(T) CPI Cow August 2025



**Up the Creek Morey Andie EX-93-4E**  
 189,840M 5.1% 9,746F 3.5% 6,590P Lifetime  
 Dam of 6GU122 AUDREY at Guernsey Gold Sires  
 2024 Living Lifetime Fat Production Leader  
 Dam of Lots 6 & 7

**LOT 6 5 #1 KAMIKAZE-P X ANDIE IVF EMBRYOS**

Consignor: ANDERSON DAVID L  
 LESTER PRAIRIE MN  
 320-395-2023 upthecreekguernseys@gmail.com

PA: -3M +0.03% +5F -0.01% -1P +173CM\$ +172NM\$  
 +0.7PTAT +1.3UDC +0.8FLC +1.2DPR +3.0PL +41CPI 2.88SCS

- Five (5) #1 IVF embryos
- Reverse sorted semen used for females
- Resulting calves will be A2A2 by parentage
- Resulting calves have a 50% chance of being Naturally Polled
- Located at Midwest Embryo Transfer Service, WI
- Embryos must be in buyer's possession within 60 days of sale

**UP THE CREEK TORPEDO KAMIKAZE-P USA000097016733 2GU147 A2A2**

08/25 USDA GPTA +260M -0.08% -2F -0.02% +6P  
 -0.4DPR +0.5PL +3NM\$ 38NM%ile +2CM\$ 56% Rel  
 2.92SCS 0.40HCR 27% Rel -0.50CCR 29% Rel  
 -0.40LIV 25% Rel 1.10GL 31% Rel -1.60EFC 26% Rel  
 AGA 08/25 PTAT +1.2 +1.4UDC +1.5FLC 56%Rel PTI +40

**LANG HAVEN LONDON TORPEDO 840003233414503 54GU520 A2A2**

**UP THE CREEK JAVAS KADAZZLE-P USA000097013540 A2A2**

Appraisal: EX 90 @ 3-04 (VEVVE)  
 1-11 365D 2X 20650M 4.3% 888F 3.2% 659P 97

**UP THE CREEK MOREY ANDIE USA000068042722 A2A2**

08/25 USDA GPTA -265M +0.14% +12F +0.01% -8P  
 +2.7DPR +5.5PL +340NM\$ 94NM%ile +343CM\$ 71% Rel  
 2.83SCS-0.90HCR 32% Rel 2.80CCR 42% Rel  
 3.10LIV 37% Rel -0.10GL 52% Rel -4.50EFC 32% Rel  
 5 Rec YDev: -679M +22F -15P  
 3 App 08/25 PTAT +0.2 +1.1UDR +0.0FLC 73%Rel CPI +41

**ADAMS CREEK REGAL MOREY-ET USA000068020971 200GU117 A2A2**

**UP THE CREEK CHALLENGES ADVENT USA000068019457**

Appraisal: 90 @ 4-01 (90/91)  
 1-11 329D 2X 13610M 5.3% 717F 3.5% 482P 97  
 3-00 305D 2X 13940M 5.2% 727F 3.7% 513P 98  
 3-11 294D 2X 15410M 5.1% 792F 3.5% 542P 97  
 Dtr: UP THE CREEK SCOOBIE ANNIKA 88 @ 2-11 (90/84)  
 2-05 349D 2X 19540M 5.3% 1032F 3.6% 709P 97

Appraisal: EX 93 @ 12-03 (EEEEVE) 4E

2-03 307D 2X 13610M 4.9% 662F 3.4% 460P 97  
 3-02 310D 2X 18480M 5.2% 970F 3.5% 640P 98  
 4-02 303D 2X 18280M 5.4% 978F 3.5% 634P 98  
 5-01 304D 2X 18720M 5.1% 949F 3.6% 668P 96  
 6-00 365D 3X 20970M 5.1% 1068F 3.7% 768P DHIA  
 7-02 296D 2X 15340M 4.8% 740F 3.5% 530P 96  
 8-02 365D 2X 16190M 5.1% 820F 3.3% 542P DHIA  
 9-08 323D 2X 15870M 5.2% 820F 3.4% 535P 98  
 10-08 316D 2X 15670M 5.1% 803F 3.5% 541P 97  
 11-09 365D 2X 17190M 5.3% 910F 3.4% 592P DHIA  
 12-11 365D 2X 15320M 5.1% 780F 3.3% 510P DHIA  
 3767D 189840M 5.1% 9746F 3.5% 6590P LIFE

**3D: UP THE CREEK DOUBLE L ATLANTA USA000068000477**

Appraisal: 88 @ 4-04 (87/87)  
 4-00 306D 2X 20530M 4.4% 900F 3.3% 685P 98

**4D: UP THE CREEK LOGICS ASPEN USA000003072626**

**5D: UP THE CREEK MAGICS ANDREA USA000003060904**

Appraisal: 90 @ 3-11 (91/85)  
 3-02 327D 2X 16840M 4.5% 750F 3.5% 585P 99

**6D: UP THE CREEK LORALS ALIAS USA000003050252**

Appraisal: 87 @ 4-05  
 4-00 294D 2X 16090M 4.3% 691F 3.3% 526P DHIA

Dam of 6GU122 AUDREY at Guernsey Gold Sires

2024 Living Lifetime Fat Production Leader

Dtrs: UP THE CREEK LOGO APPETITE 86 @ 4-08 (88/87)

3-00 319D 2X 19180M 4.5% 867F 3.2% 623P 97

UP THE CREEK SHERLOCKS ACAI 86 @ 2-10 (85/86)

#112(T) CPI Cow August 2025

UP THE CREEK PRADA ANALEE 86 @ 6-00 (87/83)

2-00 365D 2X 16030M 4.2% 681F 3.3% 536P DHIA

UP THE CREEK COPPER AVACADO 91 @ 6-03 (93/88)

5-11 298D 2X 20420M 5.0% 1022F 3.0% 621P 97



**Up the Creek Copper Avacado EX-91 2E**  
 101,180M 4.9% 4,915F 3.1% 3,160P Lifetime  
 Maternal Sister to Lots 6 & 7

**LOT 7 4 #2 PRESCOTT X ANDIE IVF EMBRYOS**

Consignor: ANDERSON DAVID L  
 LESTER PRAIRIE MN  
 320-395-2023 upthecreekguernseys@gmail.com

PA: -165M +0.09% +7F -0.04% +0P +122CM\$ +114NM\$  
 +1.0PTAT +1.3UDC +1.0FLC +0.7DPR +2.2PL +41CPI 2.94SCS

**REGAL HILLS GLADHEART PRESCOTT-ET 840003254468434 788GU24 A2A2**

08/25 USDA GPTA -64M +0.03% +2F +0.06% +8P  
 -1.3DPR -1.2PL -112NM\$ 19NM%ile -99CM\$ 56% Rel  
 3.05SCS -0.50HCR 27% Rel -1.90CCR 31% Rel  
 -2.10LIV 27% Rel 1.00GL 31% Rel -0.60EFC 28% Rel  
 AGA 08/25 PTAT +1.7 +1.5UDC +1.9FLC 56%Rel PTI +41

**UP THE CREEK MOREY ANDIE USA000068042722 A2A2**

08/25 USDA GPTA -265M +0.14% +12F +0.01% -8P  
 +2.7DPR +5.5PL +340NM\$ 94NM%ile +343CM\$ 71% Rel  
 2.83SCS-0.90HCR 32% Rel 2.80CCR 42% Rel  
 3.10LIV 37% Rel -0.10GL 52% Rel -4.50EFC 32% Rel  
 5 Rec YDev: -679M +22F -15P  
 3 App 08/25 PTAT +0.2 +1.1UDR +0.0FLC 73%Rel CPI +41  
 Appraisal: EX 93 @ 12-03 (EEEEE) 4E  
 2-03 307D 2X 13610M 4.9% 662F 3.4% 460P 97  
 3-02 310D 2X 18480M 5.2% 970F 3.5% 640P 98  
 4-02 303D 2X 18280M 5.4% 978F 3.5% 634P 98  
 5-01 304D 2X 18720M 5.1% 949F 3.6% 668P 96  
 6-00 365D 3X 20970M 5.1% 1068F 3.7% 768P DHIA  
 7-02 296D 2X 15340M 4.8% 740F 3.5% 530P 96  
 8-02 365D 2X 16190M 5.1% 820F 3.3% 542P DHIA  
 9-08 323D 2X 15870M 5.2% 820F 3.4% 535P 98  
 10-08 316D 2X 15670M 5.1% 803F 3.5% 541P 97  
 11-09 365D 2X 17190M 5.3% 910F 3.4% 592P DHIA  
 12-11 365D 2X 15320M 5.1% 780F 3.3% 510P DHIA  
 3767D 189840M 5.1% 9746F 3.5% 6590P LIFE

Dam of 6GU122 AUDREY at Guernsey Gold Sires

2024 Living Lifetime Fat Production Leader

Dtrs: UP THE CREEK LOGO APPETITE 86 @ 4-08 (88/87)

3-00 319D 2X 19180M 4.5% 867F 3.2% 623P 97

UP THE CREEK SHERLOCKS ACAI 86 @ 2-10 (85/86)

#112(T) CPI Cow August 2025

UP THE CREEK PRADA ANALEE 86 @ 6-00 (87/83)

2-00 365D 2X 16030M 4.2% 681F 3.3% 536P DHIA

UP THE CREEK COPPER AVACADO 91 @ 6-03 (93/88)

5-11 298D 2X 20420M 5.0% 1022F 3.0% 621P 97

- Four (4) #2 IVF embryos
- Reverse sorted semen used for females
- Resulting calves will be A2A2 by parentage
- Located at TransOva, IA
- Embryos must be in buyer's possession within 60 days of sale

**LANG HAVEN LONDON TORPEDO 840003233414503 54GU520 A2A2**

**OAKLAND LATIMERS PRESTIDGE 840003131521611 A2A2**

Appraisal: EX 94 @ 6-06 (EEVEE) 2E  
 4-02 365D 2X 24120M 4.5% 1080F 3.6% 873P DHIA

**ADAMS CREEK REGAL MOREY-ET USA000068020971 200GU117 A2A2**

**UP THE CREEK CHALLENGES ADVENT USA000068019457**

Appraisal: 90 @ 4-01 (90/91)  
 1-11 329D 2X 13610M 5.3% 717F 3.5% 482P 97  
 3-00 305D 2X 13940M 5.2% 727F 3.7% 513P 98  
 3-11 294D 2X 15410M 5.1% 792F 3.5% 542P 97  
 Dtr: UP THE CREEK SCOOBIE ANNIKA 88 @ 2-11 (90/84)  
 2-05 349D 2X 19540M 5.3% 1032F 3.6% 709P 97

**3D: UP THE CREEK DOUBLE L ATLANTA USA000068000477**

Appraisal: 88 @ 4-04 (87/87)  
 4-00 306D 2X 20530M 4.4% 900F 3.3% 685P 98

**4D: UP THE CREEK LOGICS ASPEN USA000003072626**

**5D: UP THE CREEK MAGICS ANDREA USA000003060904**

Appraisal: 90 @ 3-11 (91/85)  
 3-02 327D 2X 16840M 4.5% 750F 3.5% 585P 99

**6D: UP THE CREEK LORALS ALIAS USA000003050252**

Appraisal: 87 @ 4-05  
 4-00 294D 2X 16090M 4.3% 691F 3.3% 526P DHIA



**Myshan Viper Linden Honey EX-92**  
 4th Five-Year-Old NGS-Madison 2025  
 Dam of Lot 8

**LOT 8 5 #1 JC PENNEY X HONEY IVF EMBRYOS**

Breeder: SMITH SHANNON  
 LYNDEN WA

Consignor: SPRINGHILL  
 BIG PRAIRIE OH  
 330-473-9660 springhill.chris@gmail.com

- Five (5) #1 IVF embryos
- Reverse sorted semen used for females
- Located at TransOva, MD
- Embryos must be in buyer's possession within 60 days of sale

**SPRINGHILL JC PENNEY-ET 840003151591406 6GU114 A2A2**

08/25 USDA GPTA -412M +0.07% -7F +0.01% -13P  
 -3.2DPR +0.2PL -182NM\$ 9NM%ile -183CM\$ 92% Rel  
 2.98SCS -3.00HCR 52% Rel -4.40CCR 64% Rel  
 -0.10LIV 41% Rel -0.50GL 94% Rel -4.20EFC 51% Rel  
 AGA 08/25 PTAT +0.8 +1.1UDC +0.8FLC 91%Rel PTI -16

**MYSHAN VIPER LINDEN HONEY USA000097018548**

1 App 08/25 PTAT +0.8 +1.6UDR +0.7FLC 39%Rel  
 Appraisal: EX 92 @ 5-01 (EEEEEE)  
 4th Five-Year-Old NGS-Madison 2025

**COULEE CREST NOVAK LAMBEAU-ET 840003128910115 7GU473 A2A2**

**SPRINGHILL MENTOR JAZZY-ET USA000068031553 A2A2**

Appraisal: EX 95 @ 6-09 (EEEEEE)  
 4-06 365D 2X 34720M 5.2% 1799F 3.6% 1260P\* DHIA

**MYSHAN NOVAK VIPER USA000097008797 A2A2**

**COULEE CREST CASPIAN LUCY LOU USA000097008518**

Appraisal: EX 90 @ 7-04 (EEVVEE)  
 5-09 365D 2X 13910M 3.9% 548F 4.1% 567P DHIA

**3D: COULEE CREST CARTER LUCITA USA000078002937**

Appraisal: 84 @ 2-07 (85/83)

**4D: COULEE CREST LEVI LURLENE USA000068049597 A2A2**

Appraisal: 90 @ 3-08 (90/87)  
 3-03 333D 3X 19430M 4.5% 873F 3.3% 632P 94  
 Dtr: COULEE CREST DANIEL LILY 90 @ 5-00 (88/91)  
 3-06 360D 2X 32180M 5.9% 1889F 3.5% 1120P 80

**5D: COULEE CREST SILVERADO LIAN-ET USA000068026165**

Appraisal: 91 @ 4-04 (92/88)  
 4-01 365D 3X 30330M 5.2% 1592F 3.5% 1047P DHIA  
 1427D 100940M 5.5% 5514F 3.4% 3479P LIFE

**6D: FLAMBEAU MANOR B LEIGH-ET USA000068003761**

Appraisal: 86 @ 5-07 (88/84) Gold Star Dam - 2011  
 5-01 346D 3X 32180M 4.5% 1437F 3.2% 1024P 94  
 Dtr: COULEE CREST SILVERADO LILA-ET 91 @ 5-06 (92/81)  
 5-00 345D 3X 23960M 5.0% 1209F 3.4% 816P 94

**7D: FLAMBEAU MANOR ENHANCER LANA USA000003043629**

Appraisal: 92 @ 7-11 (90/90) Gold Star Dam - 2001  
 5-10 365D 2X 30271M 5.4% 1645F 3.2% 968P DHIA  
 1980D 130421M 4.9% 6454F 3.3% 4293P LIFE

**8D: FLAMBEAU MANOR VOL LAURA USA000003022186**

Appraisal: 90 @ 4-07

**9D: FLAMBEAU MANOR LESLIE USA000002947026**

Appraisal: 90 @ 3-08 Gold Star Dam - 1992

**10D: FLAMBEAU MANOR LAUREL USA000002861817**

Appraisal: 80 @ 9-04 Gold Star Dam - 1992  
 6-01 357D 2X 21602M 4.5% 974F 3.7% 792P DHIA



**Hi Guern View Dancing Diva-ET EX-96**  
 228,870M 4.7% 10,724F 3.7% 8,379P Lifetime  
 Unanimous All-American 2018 & 2021  
 Dam of Lot 9; Granddam of Lot 10

**LOT 9 4 #1 VERNON X DIVA IVF EMBRYOS**

Consignor: DINDERMAN ALAINA, AMERY + AIDAN  
 ORANGEVILLE IL  
 815-297-4111 hiayrview@hotmail.com

- Four (4) #1 IVF embryos
- Sexed semen used for females
- Resulting calves will be A2A2 by parentage
- Located at TransOva, WI
- Embryos must be in buyer's possession within 60 days of sale

PA: -257M +0.06% -3F +0.05% -1P -52CM\$ -60NM\$  
 +0.9PTAT +1.4UDC +0.6FLC -0.7DPR +0.7PL +22CPI 3.07SCS

**GOLDEN I LONDON USA000068039423 54GU481 A2A2**

**RHG VILLA LONDON VERNON-ETV 840003213010574 94GU960 A2A2**

08/25 USDA GPTA +115M +0.07% +18F +0.05% +13P  
 -0.6DPR +1.2PL +172NM\$ 61NM%ile +186CM\$ 62% Rel  
 2.96SCS 0.40HCR 32% Rel -0.40CCR 39% Rel  
 -0.10LIV 32% Rel 0.70GL 42% Rel -1.20EFC 32% Rel  
 AGA 08/25 PTAT +0.8 +1.0UDC +0.8FLC 61%Rel PTI +54

**ROZELYN AARON VILLA USA000068042242 A2A2**

Appraisal: EX 94 @ 10-05 (EEEE) 2E Gold Star Dam - 2016  
 5-07 365D 2X 26110M 5.3% 1384F 3.8% 997P 101

**HI GUERN VIEW DANCING DIVA-ET USA000068047311 A2A2**

08/25 USDA GPTA -628M +0.04% -23F +0.05% -14P  
 -0.8DPR +0.2PL -292NM\$ 1NM%ile -289CM\$ 81% Rel  
 3.18SCS-1.40HCR 46% Rel -1.00CCR 60% Rel  
 0.70LIV 47% Rel 0.10GL 61% Rel -3.80EFC 48% Rel  
 5 Rec YDev: -382M -4F +6P  
 5 App 08/25 PTAT +0.9 +1.8UDR +0.4FLC 79%Rel CPI -11  
 Appraisal: EX 96 @ 11-03 (EEEE)

**EDGEWATER MEADOWS YOGIBEAR-ET USA000000604917 7GU402 A2A2**

**ADAMS CREEK REGAL DANCER USA000068019811**

Appraisal: 92 @ 3-07 (94/86)  
 2-01 298D 2X 14210M 4.8% 689F 3.5% 491P 95  
 3-05 305D 2X 23750M 4.4% 1048F 3.3% 779P 50  
*All-American Four-Year-Old 2011*  
*Honorable Mention All-American Junior Two-Year-Old 2009*  
 Dtrs: HI GUERN VIEW DANCERS DELITE-ET 91 @ 7-09 (91/78)  
 3-04 305D 2X 16490M 4.9% 816F 3.5% 577P 94  
*Nominated All-American Jr. Three-Year-Old 2015*  
 HI GUERN VIEW DANCERS DREAM-ET 90 @ 3-07 (88/87)  
 2-10 315D 2X 22390M 3.9% 879F 3.2% 721P 94  
 LAND OF LIVING A DEBUTANTE-ET 86 @ 3-11 (87/87)  
 2-07 339D 2X 18130M 4.1% 750F 3.2% 585P 91

1-11 353D 2X 19070M 4.8% 915F 3.5% 666P 95  
 3-01 318D 2X 20010M 4.7% 933F 3.4% 688P 94  
 4-00 305D 2X 19030M 4.6% 871F 3.7% 706P 95  
 5-04 319D 2X 22670M 4.6% 1034F 3.5% 803P 94  
 6-04 305D 2X 22100M 4.3% 957F 3.5% 781P 92  
 7-07 305D 2X 25620M 3.9% 1001F 3.5% 897P 94  
 8-09 365D 2X 29120M 4.4% 1282F 3.6% 1040P DHIA  
 10-06 365D 2X 29070M\*4.7% 1374F\*3.3% 972P\* DHIA  
 3752D 228870M 4.7%10724F 3.7% 8379P LIFE  
*Unanimous All-American Lifetime Production Cow 2021*  
*Unanimous All-American Aged Cow 2018*  
*Reserve All-American Four-Year-Old 2016*  
*Honorable Mention All-American Five-Year-Old 2017*  
*Nominated All-American Junior Three-Year-Old 2015*  
*Grand Champion NGS-Louisville 2018*  
*Dam of Drone at St Jacobs and DJ at GGS*

**3D: ADAMS CREEK GLACIER DANICA USA000068007530**

Appraisal: 85 @ 4-04 (87/69)  
 3-00 310D 2X 19070M 4.8% 921F 3.3% 627P 102  
 Dtr: ADAMS CREEK TOOLITE REGAL DREAM-ET 90 @11-11 (90/86)  
 6-03 302D 2X 17570M 5.1% 899F 3.4% 599P DHIA



**Hi Guern View Divas Desire EX-91**

3-05 365D 2X 16,980M 6.5% 1,096F 3.7% 636P  
 Unanimous Jr. All-American Sr. Three-Year-Old 2023  
 Full Sister to Dam of Lot 10; Maternal Sister to Lot 9



**Hi Guern View Diva Designer EX-94-3E**

126,240M 4.6% 5,806F 3.5% 4,385P Lifetime  
 Unanimous All-American Jr. Three-Year-Old 2018  
 Mat. Sister to Dam of Lot 10; Maternal Sister to Lot 9

**LOT 10 4 #1 LEGACY X DESTINY IVF EMBRYOS**

Consignor: DINDERMAN ALAINA  
 ORANGEVILLE IL  
 815-297-4111 hiayrview@hotmail.com

- Four (4) #1 IVF embryos
- Sexed semen used for females
- Resulting calves will be A2A2 by parentage
- Located at TransOva, WI
- Embryos must be in buyer's possession within 60 days of sale

PA: +235M -0.06% +2F -0.01% +8P +10CM\$ +8NM\$  
 +1.3PTAT +1.5UDC +1.5FLC -1.5DPR +1.5PL +36CPI 2.96SCS

**KADENCE JAVA LEGACY USA000097015725 788GU13 A2A2**

08/25 USDA GPTA +260M -0.05% +3F -0.02% +6P  
 -2.6DPR +0.0PL -90NM\$ 19NM%ile -92CM\$ 60% Rel  
 2.98SCS -2.60HCR 29% Rel -4.30CCR 34% Rel  
 -1.80LIV 28% Rel 0.70GL 41% Rel -3.30EFC 30% Rel  
 AGA 08/25 PTAT +1.5 +2.1UDC +2.3FLC 60%Rel PTI +44

**SPRINGHILL JAVA-ETV-P 840003151591431 200GU123 A2A2**

**KADENCE FAMES LOVELY USA000097003682 A2A2**

Appraisal: EX 96 @ 8-00 (EEEE)  
 6-02 365D 2X 31030M 5.2% 1604F 3.6% 1129P DHIA

**HI GUERN VIEW DIVAS DESTINY USA000097006889**

08/25 USDA PTA +210M -0.06% +0F +0.01% +9P  
 -0.3DPR +3.0PL +106NM\$ 61NM%ile +111CM\$ 48% Rel  
 2.94SCS -0.30HCR 16% Rel -0.10CCR 26% Rel  
 1.20LIV 16% Rel 0.70GL 34% Rel -1.90EFC 17% Rel  
 5 Rec YDev: +1125M +12F +38P  
 3 App 08/25 PTAT +1.0 +0.8UDR +0.6FLC 46%Rel CPI +34  
 Appraisal: EX 90 @ 5-06 (EEVVV)  
 1-09 317D 2X 17230M 4.0% 692F 3.2% 557P 94  
 2-10 311D 2X 22040M 3.5% 775F 3.1% 692P 95  
 3-10 349D 2X 27580M 4.4% 1206F 3.2% 891P 94  
 5-00 365D 2X 32260M 4.0% 1293F 3.3% 1080P DHIA  
 1430D 103100M 4.0% 4148F 3.3% 3403P LIFE  
 Reserve Junior Champion Illinois State Fair Jr. Show 2019  
 Dtr: HI GUERN VIEW MENTOR DINA 88 @ 3-01 (87/86)  
 3-00 365D 2X 24280M 4.2% 1027F 3.7% 896P 96

**WARWICK MANOR BO AXEL USA000097001046 A2A2**

**HI GUERN VIEW DANCING DIVA-ET USA000068047311 A2A2**

Appraisal: EX 96 @ 11-03 (EEEE)  
 1-11 353D 2X 19070M 4.8% 915F 3.5% 666P 95  
 3-01 318D 2X 20010M 4.7% 933F 3.4% 688P 94  
 4-00 305D 2X 19030M 4.6% 871F 3.7% 706P 95  
 5-04 319D 2X 22670M 4.6% 1034F 3.5% 803P 94  
 6-04 305D 2X 22100M 4.3% 957F 3.5% 781P 92  
 7-07 305D 2X 25620M 3.9% 1001F 3.5% 897P 94  
 8-09 365D 2X 29120M 4.4% 1282F 3.6% 1040P DHIA  
 10-06 365D 2X 29070M\*4.7% 1374F\*3.3% 972P\* DHIA  
 3752D 228870M 4.7% 10724F 3.7% 8379P LIFE  
 Unanimous All-American Lifetime Production Cow 2021  
 Unanimous All-American Aged Cow 2018  
 Reserve All-American Four-Year-Old 2016  
 Honorable Mention All-American Five-Year-Old 2017  
 Nominated All-American Junior Three-Year-Old 2015  
 Grand Champion NGS-Louisville 2018  
 Dam of Drone at St Jacobs and DJ at GGS  
 Dtrs: HI GUERN VIEW DIVA DESIGNER 94 @ 9-11 (94/91)  
 5-10 365D 2X 22400M 4.3% 955F 3.5% 782P DHIA  
 Unanimous All-American & Jr. All-American Jr. Three-Year-Old 2018  
 HI GUERN VIEW LEVIS DENIM 91 @ 7-02 (91/88)  
 7-02 365D 2X 27573M 4.4% 1200F 3.2% 890P 97  
 HI GUERN VIEW LS DINA-ETV 90 @ 4-00 (85/92)  
 3-09 365D 2X 27550M 5.9% 1623F 3.5% 973P DHIA  
 HI GUERN VIEW LIKEA DIAMOND-TW 85 @ 2-05 (84/85)  
 HI GUERN VIEW DIVAS DESIRE 91 @ 4-01 (92/88)  
 3-05 365D 2X 16980M 6.5% 1096F 3.7% 636P DHIA  
 Unanimous Jr. All-American & Nom. All-American Sr. 3-Year-Old 2023  
 HI GUERN VIEW DAISY DUKE-ETV 85 @ 3-01 (84/86)



**Rocky Hill Novak Hooray EX-90**

2-03 303D 2X 17,100M 4.8% 825F 3.2% 549P  
Nominated All-American Summer Yearling 2022  
Dam of Lot 11



**Rocky Hill James Dean Hoorah**

HM All-American Fall Calf 2024  
Junior Champion NJS-Harrisburg 2024  
Maternal Sister to Lot 11

**LOT 11 5 #1 MAS X HOORAY IVF EMBRYOS**

Consignor: MCCARTY ELIJAH AND HENRY  
HUGHESVILLE PA  
570-337-4433 rockyhill91@yahoo.com

- Five (5) #1 IVF embryos
- Embryos must be made by January 1, 2026

**MUTUALLY AGREEABLE SIRE**

**ROCKY HILL NOVAK HOORAY USA000097012672 A2A2**

08/25 USDA GPTA -27M +0.18% +30F +0.03% +4P  
-1.2DPR +0.7PL +166NM\$ 75NM%ile +172CM\$ 67% Rel  
3.03SCS-2.10HCR 36% Rel -2.20CCR 43% Rel  
0.60LIV 36% Rel 2.60GL 42% Rel 0.40EFC 37% Rel  
2 Rec YDev: +82M +64F +11P  
3 App 08/25 PTAT +1.2 +1.7UDR +1.3FLC 67%Rel CPI +62  
Appraisal: EX 90 @ 3-11 (VEVEV)  
2-03 303D 2X 17100M 4.8% 825F 3.2% 549P 95  
3-03 293D 2X 16270M 5.0% 808F 3.5% 570P 97  
Nominated All-American Summer Yearling 2022  
Nominated Junior All-American Junior Three-Year-Old 2024  
1st Summer Yearling NGS-Harrisburg 2022  
2nd Jr. Three-Year-Old NGS-Louisville 2024  
Dtr: ROCKY HILL JAMES DEAN HOORAH  
Reserve Jr. All-American & HM All-American Fall Calf 2024

**LANG HAVEN GRUMPY NOVAK USA000068042542 7GU446 A2A2**

**ROCKY HILL PRADA HOLIDAY USA000078000986 A1A2**

Appraisal: EX 94 @ 9-08 (EEVEE) 3E  
2-02 313D 2X 15320M 4.3% 664F 3.3% 510P 96  
3-02 287D 2X 15930M 4.4% 700F 3.3% 523P 97  
4-02 278D 2X 18220M 4.0% 729F 3.2% 582P 95  
5-02 297D 2X 20570M 4.2% 855F 3.2% 657P 95  
6-02 325D 2X 19330M 4.1% 795F 3.1% 602P 96  
7-05 365D 2X 21040M 4.7% 990F 3.1% 657P DHIA  
9-02 305D 2X 22890M 4.7% 1086F 3.1% 708P 96  
2585D 145650M 4.4% 6464F 3.2% 4685P LIFE  
Honorable Mention All-American Lifetime Production Cow 2021  
Dtrs: ROCKY HILL KOJACK HIT ON ME-ETV 88 @ 4-02 (86/85)  
3-02 305D 2X 16800M 4.6% 771F 3.6% 607P 92  
Nominated Junior All-American 2022 & 2024  
ROCKY HILL JAVA HO HO HO-ETV 87 @ 2-05 (87/87)  
Honorable Mention All-American Winter Yearling 2024

**3D: ROCKY HILL DYNAMIC HAVEN USA000068045820**

Appraisal: 90 @ 5-10 (88/90)  
4-07 301D 2X 20180M 4.5% 917F 3.4% 694P 97

**4D: ROCKY HILL MISSION HARLEY USA000068021593**

Appraisal: 88 @ 4-09 (87/90)

**5D: NEBZ NOLL HOPE HOLLY-TW USA000068010288**

Appraisal: 86 @ 4-01 (84/90)  
3-02 355D 2X 19190M 4.3% 816F 3.3% 625P DHIA  
Reserve Junior All-American 2006 & 2007



**Rocky Hill Prada Holiday EX-94-3E**

145,650M 4.4% 6,464F 3.2% 4,685P Lifetime  
HM All-American Lifetime Production Cow 2021  
Granddam of Lot 11



**Rocky Hill Gamble Luscious EX-94 2E**  
 6-05 305D 2X 21,400M 3.5% 758F 2.9% 615P  
 Nominated All-American Five-Year-Old 2022  
 Dam of Lot 12

**Rocky Hill Kojack Lainey-ETV**  
 HM Junior Champion Guernsey Gold Showcase 2025  
 Res. Jr. Champion New England Classic 2025  
 Full Sister to Lot 12

**LOT 12 3 #1 KOJACK X LUSCIOUS IVF EMBRYOS**

Breeder: MCCARTY ELIJAH AND HENRY  
 HUGHESVILLE PA  
 Consignor: ANDERSON DAVID L  
 LESTER PRAIRIE MN  
 320-395-2023 upthecreekguernseys@gmail.com

- Three (3) #1 IVF embryos
- Reverse sorted semen used for females
- Resulting calves will be A2A2 by parentage
- Located at Midwest Embryo Transfer Service, WI
- Embryos must be in buyer's possession within 60 days of sale

PA: +632M -0.17% +1F -0.07% +10P -167CM\$ -152NM\$  
 +1.3PTAT +0.8UDC +0.6FLC -1.4DPR -1.8PL +17CPI 3.09SCS

**TROTACRE LORAL TILLER-ET USA000000603341 7GU360 A2A2**

**DIX LEE TILLER KOJACK-ET USA000068015493 49GU120**

08/25 USDA PTA +496M -0.05% +15F +0.03% +23P  
 -1.9DPR -3.8PL -204NM\$ 4NM%ile -198CM\$ 88% Rel  
 3.23SCS -1.30HCR 34% Rel -2.80CCR 64% Rel  
 -4.20LIV 46% Rel -0.50GL 82% Rel 0.00EFC 45% Rel  
 AGA 08/25 PTAT +1.6 +1.1UDC +0.7FLC 89%Rel PTI +41

**JASTES LOTTO KATRINA USA000003064418**

Appraisal: 93 @ 5-07 (94/89) Gold Star Dam - 2007  
 4-08 365D 2X 28970M 4.2% 1229F 3.6% 1041P DHIA

**LAVON FARMS REGAL GAMBLE-ET USA000068041944 A2A2**

**ROCKY HILL GAMBLE LUSCIOUS USA000097003732 A2A2**

08/25 USDA GPTA +768M -0.28% -14F -0.16% -3P  
 -0.8DPR +0.3PL -99NM\$ 17NM%ile -135CM\$ 69% Rel  
 2.95SCS -1.00HCR 29% Rel -1.00CCR 43% Rel  
 -0.60LIV 32% Rel 0.00GL 43% Rel -2.10EFC 33% Rel  
 3 Rec YDev: +846M -72F -37P  
 6 App 08/25 PTAT +0.9 +0.5UDR +0.5FLC 62%Rel CPI -7  
 Appraisal: EX 94 @ 6-05 (EEVEE) 2E  
 2-07 365D 2X 20420M 3.3% 679F 2.8% 569P DHIA  
 4-00 365D 2X 20980M 3.3% 689F 2.7% 566P DHIA  
 5-03 305D 2X 20700M 3.2% 670F 2.8% 573P 98  
 6-05 305D 2X 21400M 3.5% 758F 2.9% 615P 97

**COULEE CREST AP LILITH USA000078002520 A2A2**

Appraisal: 88 @ 3-04 (88/86)  
 2-00 320D 2X 21250M 3.5% 750F 3.0% 632P 96  
 3-00 275D 2X 18350M 3.0% 558F 2.9% 531P 96  
 4-00 359D 2X 28040M 3.3% 912F 2.7% 762P 97  
 Dtr: ROCKY HILL COPPER LILIANN 91 @ 6-08 (91/88)  
 1st Jr. Three-Year-Old North Carolina State Fair 2019

Nominated All-American Five-Year-Old 2022

Reserve Grand Champion Guernsey Gold Showcase Jr. Show 2025

Dtr: ROCKY HILL KOJACK LAINEY-ETV

Honorable Mention Jr. Champion Guernsey Gold Showcase 2025

**3D: COULEE CREST NICK LORILYN USA000068023988 A1A2**

Appraisal: 91 @ 5-00 (90/91)  
 3-05 365D 3X 42440M\*5.3% 2254F\*3.1% 1298P\* DHIA  
 1168D 107900M 5.3% 5707F 3.3% 3533P LIFE

**4D: FLAMBEAU MANOR DECISION LORI-ET USA000068012709 A2A2**

Appraisal: 90 @ 8-02 (88/90) Gold Star Dam - 2013  
 3-09 365D 3X 44250M\*5.9% 2600F\*3.0% 1313P\* 94  
 2328D 184340M 5.4%10017F 3.3% 6002P LIFE

**5D: FLAMBEAU MANOR ENHANCER LANA USA000003043629**

Appraisal: 92 @ 7-11 (90/90) Gold Star Dam - 2001  
 5-10 365D 2X 30271M 5.4% 1645F 3.2% 968P DHIA  
 1980D 130421M 4.9% 6454F 3.3% 4293P LIFE

**6D: FLAMBEAU MANOR VOL LAURA USA000003022186**

Appraisal: 90 @ 4-07

**7D: FLAMBEAU MANOR LESLIE USA000002947026**

Appraisal: 90 @ 3-08 Gold Star Dam - 1992

**8D: FLAMBEAU MANOR LAUREL USA000002861817**

Appraisal: 80 @ 9-04 Gold Star Dam - 1992  
 6-01 357D 2X 21602M 4.5% 974F 3.7% 792P DHIA



**Dairyman Richard 5058 Jimena-ET GP-84**  
 2-09 307D 3X 27,880M 3.5% 962F 3.3% 916P  
 #1(T) CPI Cow August 2025  
 Dam of Lot 13



**Dairyman Theo 5092 Jolie-ET VG-86**  
 1-11 365D 3X 23,100M 5.2% 1,209F 3.5% 816P  
 #15(T) CPI Cow August 2025  
 Maternal Sister to Dam of Lot 13

**LOT 13 3 #1 COLLECTOR X JIMENA IVF EMBRYOS**

Consignor: HOARDS DAIRYMAN FARM  
 FORT ATKINSON WI  
 920-728-4822 hdfarm@hoards.com

PA: +728M -0.02% +28F -0.02% +20P +367CM\$ +370NM\$  
 +0.4PTAT +1.1UDC +0.4FLC +1.0DPR +2.6PL +81CPI 2.99SCS

**DAIRYMAN COIN COLLECTOR 840003219111145 551GU916 A2A2**

08/25 USDA GPTA -470M +0.18% +9F +0.01% -14P  
 +2.0DPR +4.0PL +256NM\$ 85NM%ile +258CM\$ 66% Rel  
 2.90SCS 2.50HCR 40% Rel 2.80CCR 39% Rel  
 2.40LIV 32% Rel -0.60GL 46% Rel 6.80EFC 33% Rel  
 AGA 08/25 PTAT +0.4 +1.7UDC +0.0FLC 61%Rel PTI +39

**DAIRYMAN RICHARD 5058 JIMENA-ET 840003238445270 A2A2**

08/25 USDA GPTA +1926M -0.22% +47F -0.06% +54P  
 -0.1DPR +1.1PL +483NM\$ 98NM%ile +476CM\$ 69% Rel  
 3.08SCS 1.60HCR 32% Rel 0.40CCR 37% Rel  
 -0.20LIV 30% Rel -1.70GL 44% Rel 3.70EFC 32% Rel  
 2 Rec YDev: +5274M +146F +160P  
 5 App 08/25 PTAT +0.4 +0.4UDR +0.7FLC 76%Rel CPI +123  
 Appraisal: +84 @ 3-07 (+V+++)  
 1-10 288D 3X 23040M 4.0% 930F 3.2% 739P 104  
 2-09 307D 3X 27880M 3.5% 962F 3.3% 916P 104  
 3-09 305D 3X 28749M 3.6% 1021F 3.3% 938P Proj. Act.  
 #1(T) CPI Cow August 2025  
 Dtr: DAIRYMAN OLAF 5634 JOSEFINA  
 #1 CPI Heifer August 2025

- Three (3) #1 IVF embryos
- Sexed semen used for females
- Resulting calves would rank in the top 15 CPI Heifers - August 2025
- Resulting calves will be A2A2 by parentage
- Located at Sunshine Genetics, WI
- Embryos must be in buyer's possession within 60 days of sale

**JENS GOLD COPPER COIN 840003134140210 6GU100 A2A2**

**DAIRYMAN LAREDO 2303 CHLOE 840003012938911 A2A2**

Appraisal: EX 92 @ 9-10 (EEVEE) 2E Gold Star Dam - 2018  
 4-11 341D 3X 26910M 5.1% 1368F 3.7% 1009P 95

**DAIRYMAN LEGEND RICHARD 840003009973860 49GU143 A2A2**

**DAIRYMAN ERNIE 3436 JUMBO 840003134202036 A2A2**

Appraisal: VG 86 @ 4-08 (VEV++) Gold Star Dam - 2024  
 2-01 359D 3X 31740M 4.7% 1505F 3.1% 985P 98  
 3-03 355D 3X 27570M 4.4% 1214F 3.3% 911P 99  
 4-05 298D 3X 30410M 4.6% 1398F 3.0% 921P 104  
 5-04 365D 3X 31870M 4.9% 1560F 3.2% 1007P DHIA  
 1420D 124770M 4.7% 5857F 3.2% 3936P LIFE  
 Dtrs: DAIRYMAN BUILT 4746 JEUX 83 @ 3-06 (85/78)  
 2-06 352D 3X 18380M 5.3% 974F 3.5% 635P 104  
 DAIRYMAN RICHARD 5057 JUSTICE-ET 83 @ 3-00 (77/85)  
 2-00 365D 3X 28400M 3.8% 1069F 3.1% 881P DHIA  
 #4(T) CPI Cow August 2025  
 DAIRYMAN THEO 5092 JOLIE-ET 86 @ 3-05 (83/87)  
 1-11 365D 3X 23100M 5.2% 1209F 3.5% 816P DHIA  
 #15(T) CPI Cow August 2025  
 DAIRYMAN BEAVER 5117 JUNIE-ET 83 @ 3-04 (83/83)  
 2-10 305D 3X 19530M 4.9% 954F 3.7% 722P 104  
 #10 CPI Cow August 2025

**3D: DAIRYMAN GEO JUST USA000070781324**

Appraisal: 82 @ 5-06 (75/82) Gold Star Dam - 2016  
 5-00 365D 3X 38850M\*4.3% 1686F 3.3% 1299P DHIA  
 1644D 138920M 4.5% 6270F 3.4% 4744P LIFE

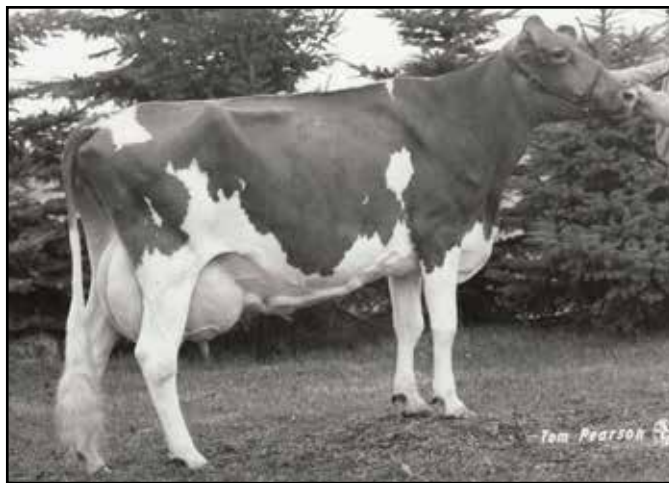
**4D: DAIRYMAN CONRAD JUSTICE USA000064220990**

Appraisal: 88 @ 3-11 (90/86)  
 4-09 365D 3X 29940M 5.5% 1651F 3.7% 1119P DHIA  
 1910D 126030M 5.7% 7141F 3.9% 4890P LIFE



**Jensgolden Charming Onadia VG-86**

3-01 318D 3X 19,960M 6.0% 1,205F 3.8% 759P  
 #31(T) CPI Cow August 2025  
 Maternal Sister to Lot 14



**Jensgolden Fayette Orianna EX-92**

136,090M 4.6% 6,261F 3.7% 5,097P Lifetime  
 Dam of Royal Oak and Option  
 Maternal Family of Lot 14

**LOT 14 4 #1 JED X ONALA IVF EMBRYOS**

Consignor: HOARDS DAIRYMAN FARM  
 FORT ATKINSON WI  
 920-728-4822 hdfarm@hoards.com

PA: +97M +0.12% +24F +0.04% +10P +392CM\$ +379NM\$  
 +0.5PTAT +1.1UDC +0.2FLC +1.1DPR +5.2PL +69CPI 2.79SCS

- Four (4) #1 IVF embryos
- Embryos not sexed
- Resulting heifers would rank #62 on the CPI Heifer List - August 2025
- Located at Sunshine Genetics, WI
- Embryos must be in buyer's possession within 60 days of sale

**DAIRYMAN TSUNAMI JED-ET 840003240506918 49GU244 A2A2**

08/25 USDA GPTA -28M +0.04% +5F +0.05% +7P  
 +1.2DPR +5.1PL +222NM\$ 71NM%ile +235CM\$ 58% Rel  
 2.89SCS 0.60HCR 31% Rel 2.00CCR 32% Rel  
 2.70LIV 27% Rel 0.10GL 40% Rel 1.30EFC 28% Rel  
 AGA 08/25 PTAT +0.8 +1.1UDC +0.1FLC 58%Rel PTI +53

**COULEE CREST TSUNAMI-ETV 840003214098840 200GU124 A2A2**

**COULEE CREST PILOT LAVA-ET USA000097000835**

Appraisal: EX 92 @ 9-05 (EEEEEE) 3E  
 6-06 365D 3X 33320M 5.4% 1805F 3.6% 1206P DHIA

**JENSGOLDEN CORDELL ONALA 840003128753804 A1A2**

08/25 USDA GPTA +221M +0.19% +43F +0.03% +12P  
 +0.9DPR +5.3PL +535NM\$ 98NM%ile +549CM\$ 73% Rel  
 2.69SCS 0.50HCR 35% Rel 1.50CCR 43% Rel  
 -0.10LIV 36% Rel 0.30GL 44% Rel 3.00EFC 39% Rel  
 5 Rec YDev: +852M +106F +36P  
 3 App 08/25 PTAT +0.2 +1.1UDR +0.3FLC 77%Rel CPI +85  
 Appraisal: EX 91 @ 9-09 (EEVEV) 2E Gold Star Dam - 2020  
 1-11 305D 2X 12000M 5.6% 674F 3.7% 442P 95  
 3-02 365D 2X 21863M 5.5% 1200F 3.7% 816P DHIA  
 4-04 339D 2X 22540M 5.7% 1291F 3.7% 836P 96  
 5-05 365D 3X 29840M 5.3% 1571F 3.6% 1080P DHIA  
 6-07 365D 3X 29080M 5.7% 1650F 3.6% 1044P DHIA  
 7-09 365D 3X 26520M 5.2% 1367F 3.5% 941P DHIA  
 9-01 294D 3X 15800M 6.4% 1017F 4.4% 693P 103  
 2590D 165020M 5.6% 9241F 3.7% 6153P LIFE

**RIPLEY FARMS AARON CORDELL USA000068027378 7GU440 A1A2**

**JENSGOLDEN DOUBLE L ONALYN USA000068031379 A1A2**

Appraisal: VG 88 @ 8-08 (VEVE+) Gold Star Dam - 2018  
 2-00 288D 2X 13530M 4.7% 632F 3.3% 443P 91  
 2-11 311D 2X 15540M 5.0% 778F 3.5% 550P 97  
 3-10 337D 2X 21380M 4.6% 991F 3.3% 711P 97  
 4-11 304D 2X 17930M 4.7% 845F 3.4% 604P 97  
 5-11 308D 2X 19460M 4.9% 952F 3.5% 686P 96  
 6-11 305D 2X 19570M 4.3% 849F 3.6% 701P 96  
 8-01 305D 2X 20180M 4.6% 927F 3.4% 691P 96  
 9-02 326D 2X 20250M 4.7% 947F 3.2% 657P 74  
 10-03 257D 2X 14960M 4.1% 614F 3.2% 479P 93  
 2887D 169930M 4.6% 7880F 3.4% 5797P LIFE  
 Dtr: JENSGOLDEN PENNEY ONLISA 86 @ 3-06 (86/87)  
 3-05 365D 2X 19590M 4.5% 880F 3.4% 673P DHIA

#12 CPI Cow & #7 NM\$ Cow August 2025

Dam of #1 PTI young sire OLAF

Dtrs: JENSGOLDEN CHARMING ONADIA 86 @ 5-04 (87/82)

3-01 318D 3X 19960M 6.0% 1205F 3.8% 759P 104

#31(T) CPI Cow & #26 NM\$ Cow August 2025

DAIRYMAN CHECKMATE 5250 OHEAVENS-ET 82 @ 2-03 (80/82)

1-10 307D 3X 15710M 4.4% 698F 3.5% 544P 104

#31(T) CPI Cow August 2025



**Pond N Pines Michelang Sunchip VG-87 @ 2-03**  
2nd Summer 2-Yr-Old Guernsey Gold Showcase 2025  
Dam of Lots 15 & 16



**Pond N Pines Drone Sun Butter-ETV VG-88**  
2-08 314D 3X 18,260M 5.4% 982F 3.5% 643P  
4th Sr. Three-Year-Old NGS-Madison 2025  
Granddam of Lots 15 & 16

**LOT 15 3 #1 OTHELLO X SUNCHIP IVF EMBRYOS**

Consignor: TAYLOR GLENN A & SHERYL  
CASSVILLE NY  
315-292-4230 twfarm.sheryl@gmail.com

- Three (3) #1 IVF embryos
- Sexed semen used for females
- Located at Vytelle, OH
- Embryos must be in buyer's possession within 60 days of sale

**DAIRYMAN AUDREY OTHELLO-ET 840003240506930 551GU918 A2A2**

08/25 USDA GPTA +397M +0.10% +36F +0.01% +16P  
+2.0DPR +5.2PL +491NM\$ 99NM%ile +497CM\$ 56% Rel  
3.01SCS 0.70HCR 30% Rel 3.20CCR 31% Rel  
2.50LIV 30% Rel 0.00GL 39% Rel -2.20EFC 28% Rel  
AGA 08/25 PTAT +0.3 +0.5UDC +0.1FLC 55%Rel PTI +83

**UP THE CREEK LONDON AUDREY 840003210758207 6GU122 A2A2**

**JENS GOLD LOGO OPAL 840003128753786 A2A2**  
Appraisal: EX 90 @ 6-06 (EEVVE) 2E Gold Star Dam - 2023  
5-09 365D 3X 25580M 4.9% 1260F 3.5% 893P DHIA

**POND N PINES MICHELANG SUNCHIP 840003235932742**

08/25 USDA PTA +366M -0.10% -1F -0.05% +4P  
-2.4DPR -0.7PL -133NM\$ 12NM%ile -146CM\$ 38% Rel  
3.14SCS-1.30HCR 19% Rel -2.70CCR 23% Rel  
-2.30LIV 17% Rel 0.00GL 31% Rel 0.20EFC 20% Rel  
1 Rec YDev: +493M -16F -20P  
Appraisal: VG 87 @ 2-03 (VV+VV)  
1-10 305D 3X 14806M 5.3% 789F 3.2% 478P Proj. Act.  
2nd Summer Jr. Two-Year-Old Guernsey Gold Showcase 2025

**GLADHEART MICHELANGELO-ET 840003206246837 54GU502 A2A2**

**POND N PINES DRONE SUN BUTTER-ETV 840003235932589**  
Appraisal: VG 88 @ 3-06 (VVVVV)  
1-09 278D 3X 11810M 4.7% 556F 3.4% 396P DHIA  
2-08 314D 3X 18260M 5.4% 982F 3.5% 643P DHIA  
Reserve Junior Champion Midwest Spring Show 2022  
4th Sr. Three-Year-Old NGS-Madison 2025  
1st Yearling in Milk Midwest Guernsey Show 2023

**3D: POND NPINES BEAU NUTTER BUTTER-ETV 840003206597583**

Appraisal: VG 89 @ 3-06 (EEVEE)  
2-06 365D 2X 24220M 4.8% 1164F 3.4% 835P DHIA  
Unanimous All-American Jr. Three-Year-Old 2022  
Unanimous All-American & Jr. All-American Summer Yearling 2020  
Junior Champion NGS- & NJS-Louisville 2020

**4D: POND N PINES CRUNCH NUTELLA 840003136241830**

Nominated Junior All-American Winter Calf 2017

**5D: FARIA FARMS MOZIER MENTOR NONA-ET USA000068048218**

Appraisal: 88 @ 5-03 (86/87)

**6D: LANG HAVEN TILLER NIRVANA-ET USA000068003934**

Appraisal: 89 @ 2-05 (88/90)  
2-01 365D 2X 23890M 4.6% 1103F 3.4% 806P 101  
All-American Fall Calf 2005 All-American Fall Yearling 2006  
Nominated All-American Sr. Two-Year-Old 2007

**7D: LANG HAVEN OPTION NADIA-ET USA000003073416**

Appraisal: 90 @ 3-07 (90/91)  
3-04 365D 2X 37270M\*5.9% 2205F\*3.3% 1212P\* DHIA

**8D: LANG HAVEN FORTRESS NATALIE USA000003046706**

Appraisal: 91 @ 4-00  
2-08 305D 2X 20130M 4.6% 920F 3.3% 659P DHIA

**9D: LANG HAVEN PERFECTO NICOLE USA000003021234**

Appraisal: 90 @ 4-03 Gold Star Dam - 1999  
5-03 305D 2X 22490M 4.3% 960F 3.3% 732P DHIA  
1693D 101780M 4.2% 4298F 3.3% 3317P LIFE

**10D: DAIRYMAN FRANK NORMA USA000002990719**

Appraisal: 87 @ 4-11

**11D: DAIRYMAN PATRICIAN NORA USA000002880402**

Appraisal: 90 @ 3-11  
3-02 362D 2X 21250M 4.2% 884F 3.4% 719P DHIA



**Pond NPines Beau Nutter Butter-ETV VG-89**  
 2-06 365D 2X 24,220M 4.8% 1,164F 3.4% 835P  
 Unanimous All-American 2020 & 2022  
 3rd Dam of Lots 15 & 16

**Gold N Pines JD Butterbraid-ETV VG-89**  
 Unanimous All-American Spring Yearling 2024  
 Junior Champion NGS-Madison 2024  
 Maternal Sister to Granddam of Lots 15 & 16

**LOT 16 3 #1 LEGACY X SUNCHIP IVF EMBRYOS**

Consignor: TAYLOR GLENN A & SHERYL  
 CASSVILLE NY  
 315-292-4230 twfarm.sheryl@gmail.com

- Three (3) #1 IVF embryos
- Sexed semen used for females
- Located at Vytelle, OH
- Embryos must be in buyer's possession within 60 days of sale

**KADENCE JAVA LEGACY USA000097015725 788GU13 A2A2**

08/25 USDA GPTA +260M -0.05% +3F -0.02% +6P  
 -2.6DPR +0.0PL -90NM\$ 19NM%ile -92CM\$ 60% Rel  
 2.98SCS -2.60HCR 29% Rel -4.30CCR 34% Rel  
 -1.80LIV 28% Rel 0.70GL 41% Rel -3.30EFC 30% Rel  
 AGA 08/25 PTAT +1.5 +2.1UDC +2.3FLC 60%Rel PTI +44

**SPRINGHILL JAVA-ETV-P 840003151591431 200GU123 A2A2**

**KADENCE FAMES LOVELY USA000097003682 A2A2**

Appraisal: EX 96 @ 8-00 (EEEEEE)  
 6-02 365D 2X 31030M 5.2% 1604F 3.6% 1129P DHIA

**POND N PINES MICHELANG SUNCHIP 840003235932742**

08/25 USDA PTA +366M -0.10% -1F -0.05% +4P  
 -2.4DPR -0.7PL -133NM\$ 12NM%ile -146CM\$ 38% Rel  
 3.14SCS-1.30HCR 19% Rel -2.70CCR 23% Rel  
 -2.30LIV 17% Rel 0.00GL 31% Rel 0.20EFC 20% Rel  
 1 Rec YDev: +493M -16F -20P  
 Appraisal: VG 87 @ 2-03 (VV+VV)  
 1-10 305D 3X 14806M 5.3% 789F 3.2% 478P Proj. Act.  
 2nd Summer Jr. Two-Year-Old Guernsey Gold Showcase 2025

**GLADHEART MICHELANGELO-ET 840003206246837 54GU502 A2A2**

**POND N PINES DRONE SUN BUTTER-ETV 840003235932589**

Appraisal: VG 88 @ 3-06 (VVVVV)  
 1-09 278D 3X 11810M 4.7% 556F 3.4% 396P DHIA  
 2-08 314D 3X 18260M 5.4% 982F 3.5% 643P DHIA  
 Reserve Junior Champion Midwest Spring Show 2022  
 4th Sr. Three-Year-Old NGS-Madison 2025  
 1st Yearling in Milk Midwest Guernsey Show 2023

**3D: POND NPINES BEAU NUTTER BUTTER-ETV 840003206597583**

Appraisal: VG 89 @ 3-06 (EEEEE)  
 2-06 365D 2X 24220M 4.8% 1164F 3.4% 835P DHIA  
 Unanimous All-American Jr. Three-Year-Old 2022  
 Unanimous All-American & Jr. All-American Summer Yearling 2020  
 Junior Champion NGS- & NJS-Louisville 2020

**4D: POND N PINES CRUNCH NUTELLA 840003136241830**

Nominated Junior All-American Winter Calf 2017

**5D: FARIA FARMS MOZIER MENTOR NONA-ET USA000068048218**

Appraisal: 88 @ 5-03 (86/87)

**6D: LANG HAVEN TILLER NIRVANA-ET USA000068003934**

Appraisal: 89 @ 2-05 (88/90)  
 2-01 365D 2X 23890M 4.6% 1103F 3.4% 806P 101  
 All-American Fall Calf 2005 All-American Fall Yearling 2006  
 Nominated All-American Sr. Two-Year-Old 2007

**7D: LANG HAVEN OPTION NADIA-ET USA000003073416**

Appraisal: 90 @ 3-07 (90/91)  
 3-04 365D 2X 37270M\*5.9% 2205F\*3.3% 1212P\* DHIA

**8D: LANG HAVEN FORTRESS NATALIE USA000003046706**

Appraisal: 91 @ 4-00  
 2-08 305D 2X 20130M 4.6% 920F 3.3% 659P DHIA

**9D: LANG HAVEN PERFECTO NICOLE USA000003021234**

Appraisal: 90 @ 4-03 Gold Star Dam - 1999  
 5-03 305D 2X 22490M 4.3% 960F 3.3% 732P DHIA  
 1693D 101780M 4.2% 4298F 3.3% 3317P LIFE

**10D: DAIRYMAN FRANK NORMA USA000002990719**

Appraisal: 87 @ 4-11

**11D: DAIRYMAN PATRICIAN NORA USA000002880402**

Appraisal: 90 @ 3-11  
 3-02 362D 2X 21250M 4.2% 884F 3.4% 719P DHIA



**Chupps Spring Star JP Topanga EX-93**  
137,660M 4.7% 6,465F 3.7% 5,068P Lifetime  
Dam of Lot 17



**Knapps HP Fame Topeka-ET EX-94**  
121,240M 3.9% 4,688F 3.4% 4,138P Lifetime  
All-American Sr. Two-Year-Old 2014  
Granddam of Lot 17

**LOT 17 5 #1 AMERICAN PIE X TOPANGA IVF EMBRYOS**

Consignor: SPRINGHILL  
BIG PRAIRIE OH  
330-473-9660 springhill.chris@gmail.com

PA: -694M +0.13% -12F +0.04% -18P -86CM\$ -91NM\$  
+0.1PTAT +0.5UDC +0.2FLC +2.6DPR +0.3PL -10CPI 2.95SCS

**INDIAN ACRES AMERICAN PIE USA000068016348 31GU618 A2A2**

08/25 USDA GPTA +67M -0.18% -27F -0.04% -5P  
-2.0DPR +2.9PL -88NM\$ 19NM%ile -93CM\$ 98% Rel  
2.76SCS -3.30HCR 71% Rel -2.60CCR 91% Rel  
-0.10LIV 77% Rel 0.80GL 98% Rel -7.20EFC 81% Rel  
AGA 08/25 PTAT -0.2 +0.0UDC +0.5FLC 98%Rel PTI -33

**CHUPPS SPRING STAR JP TOPANGA USA000068032783 A2A2**

08/25 USDA GPTA -1205M +0.22% -21F +0.11% -24P  
+0.4DPR +2.3PL -68NM\$ 24NM%ile -49CM\$ 73% Rel  
2.90SCS-0.80HCR 33% Rel -1.10CCR 46% Rel  
1.20LIV 36% Rel 1.30GL 47% Rel -3.70EFC 36% Rel  
5 Rec YDev: -1804M -21F -31P  
3 App 08/25 PTAT +0.6 +1.1UDR +0.6FLC 75%Rel CPI -23  
Appraisal: EX 93 @ 9-02 (EEEEEE)  
2-01 318D 2X 16570M 5.3% 872F 3.7% 612P 93  
3-01 365D 2X 16860M 5.3% 898F 3.8% 649P DHIA  
4-10 305D 2X 16880M 4.1% 684F 3.4% 577P 96  
5-10 309D 2X 17750M 3.9% 701F 3.7% 655P 96  
6-10 318D 2X 26530M 5.1% 1359F 3.7% 974P 95  
7-11 348D 2X 18450M 4.2% 767F 3.6% 670P 98  
9-01 365D 2X 21960M 4.7% 1041F 3.7% 822P DHIA  
2401D 137660M 4.7% 6465F 3.7% 5068P LIFE  
Dtr: SPRINGHILL C TOPSY 87 @ 4-03 (88/86)  
2-03 365D 2X 17240M 5.6% 965F 3.8% 648P DHIA

- Five (5) #1 IVF embryos
- Reverse sorted semen used for females
- Resulting calves will be A2A2 by parentage
- Located at TransOva, MD
- Embryos must be in buyer's possession within 60 days of sale

**IDLE GOLD E CHALLENGE-ET USA000000604268 1GU418 A2A2**

**INDIAN ACRES MM PISTACHIO PIE USA000003076310**

Appraisal: 94 @ 5-00 (95/90)  
4-10 365D 2X 26187M 5.1% 1330F 3.6% 939P 99

**SPRINGHILL JACKPOT-ET USA000068030404 7GU437 A2A2**

**KNAPPS HP FAME TOPEKA-ET USA000068046321 A2A2**

Appraisal: EX 94 @ 8-11 (EEEEEE)  
2-04 322D 2X 16900M 3.8% 644F 3.3% 553P 101  
3-03 365D 2X 23700M 4.3% 1010F 3.6% 854P DHIA  
5-00 365D 2X 25700M 4.1% 1062F 3.5% 897P DHIA  
6-04 365D 2X 22450M 3.5% 781F 3.3% 731P DHIA  
8-00 365D 2X 26580M 3.6% 948F 3.3% 866P DHIA  
1950D 121240M 3.9% 4688F 3.4% 4138P LIFE  
All-American & Jr. All-American Sr. Two-Year-Old 2014  
HM All-American Aged Cow 2018  
HM Junior All-American Winter Yearling 2013  
Dtrs: SPRING STAR TROPICANA 85 @ 2-07 (85/85)  
SPRINGHILL J TAZMANIA-ETV 87 @ 3-06 (87/86)  
2-07 365D 2X 22500M 4.1% 916F 3.2% 710P DHIA  
SPRINGHILL JUDGMENT TROPIC-ETV 88 @ 5-02 (86/88)  
2-10 365D 2X 22000M 4.2% 926F 3.3% 722P DHIA  
Honorable Mention All-American Yearling in Milk 2021  
SPRINGHILL JUDGMENT TEAGAN-ETV 87 @ 4-03 (83/90)  
SPRINGHILL JCP TAMPA-ETV 90 @ 3-00 (89/90)  
SPRINGHILL JCP TALLAHASSEE-ETV 88 @ 4-00 (88/86)  
SPRINGHILL JAMES DEAN TIARA-ETV 87 @ 3-10 (86/90)

**3D: KNAPPS ACE TAMERA USA000068006299**

Appraisal: 93 @ 9-07 (91/92)  
9-07 365D 2X 32350M 4.2% 1351F 3.2% 1036P DHIA  
3038D 178720M 4.4% 7847F 3.4% 6004P LIFE  
24 Excellent Daughters

**4D: SUNRISE LUXURY TAMI USA000003068188**

Appraisal: 93 @ 5-04 (92/92)  
3-10 365D 2X 28480M 4.2% 1198F 3.2% 907P DHIA  
2395D 151070M 4.0% 6087F 3.2% 4888P LIFE



**Hartdale Showtime Confetti EX-91**

115,530M 4.6% 5,342F 3.2% 3,711P Lifetime  
Reserve All-American Winter Yearling 2010  
Granddam of Lot 18

**LOT 18 3 #1 DEREK X CHLOE IVF EMBRYOS**

Consignor: PLOCHER LEVI + CARLY & PLOCHER SAMANTHA  
SALEM OH  
330-888-9211 carlyplocher@gmail.com

PA: -694M +0.13% -12F +0.04% -18P -86CM\$ -91NM\$  
+0.1PTAT +0.5UDC +0.2FLC +2.6DPR +0.3PL -10CPI 2.95SCS

**DIX-LEE NATE DEREK 840003149154016 54GU504 A2A2**

08/25 USDA PTA -796M +0.28% +8F +0.03% -22P  
+3.8DPR -0.6PL +31NM\$ 42NM%ile +34CM\$ 65% Rel  
2.94SCS 1.10HCR 16% Rel 4.20CCR 25% Rel  
1.40LIV 20% Rel -0.50GL 57% Rel 4.30EFC 19% Rel  
AGA 08/25 PTAT -0.2 +0.3UDC -0.5FLC 55%Rel PTI +0

**HARTDALE LATIMER CHLOE-ETV 840003203481730 A2A2**

08/25 USDA GPTA -591M -0.02% -31F +0.04% -14P  
+1.4DPR +1.1PL -212NM\$ 4NM%ile -205CM\$ 59% Rel  
2.95SCS-1.70HCR 33% Rel -0.20CCR 40% Rel  
1.90LIV 35% Rel 0.10GL 42% Rel 0.40EFC 36% Rel  
2 App 08/25 PTAT +0.4 +0.6UDR +0.8FLC 67%Rel CPI -22  
Appraisal: VG 85 @ 4-08 (V++V+)  
Senior Champion Ohio State Fair 2024



**Hartdale Alstar Cutie EX-93-2E**

158,720M 4.2% 6,735F 3.1% 4,984P Lifetime  
Reserve Jr. All-American Jr. Three-Year-Old 2014  
Maternal Sister to Dam of Lot 18



**Hartdale Latimer Chloe-ETV VG-85**

Senior Champion Ohio State Fair 2024  
Dam of Lot 18

- Three (3) #1 IVF embryos
- Sexed semen used for Females
- Resulting calves will be A2A2 by parentage
- Located at TransOva, MD
- Embryos must be in buyer's possession within 60 days of sale

**STIL DREAMN KOJACK NATE USA000078005818 49GU138 A1A2**

**DIX LEE GARGOYLE DELA USA000003066166 A2A2**

Appraisal: 91 @ 11-00 (91/90) Gold Star Dam - 2007  
6-07 329D 2X 19440M 5.1% 996F 3.8% 729P 93

**COULEE CREST FAME LATIMER-ET USA000078001154 76GU810 A2A2**

**HARTDALE SHOWTIME CONFETTI USA000068025982**

Appraisal: 91 @ 7-05 (90/88)  
2-02 305D 2X 15490M 5.0% 771F 3.3% 509P 95  
3-11 355D 2X 22930M 4.5% 1037F 3.2% 733P 98  
5-01 319D 2X 22730M 4.2% 953F 3.2% 717P 98  
6-02 304D 2X 20750M 4.5% 943F 3.1% 645P 97  
7-03 305D 2X 19410M 4.6% 884F 3.1% 600P 98  
1919D 115530M 4.6% 5342F 3.2% 3711P LIFE  
Reserve All-American Winter Yearling 2010  
Nominated All-American Aged Cow 2015  
Dtrs: HARTDALE ALSTAR CUTIE 93 @10-04 (93/90)  
6-06 348D 2X 24360M 4.4% 1078F 3.2% 783P 97  
Res. Jr. All-American & Nom. All-American Jr. Three-Year-Old 2014  
HARTDALE KCCK LDYMN CLASSIC-ET 88 @ 3-09 (87/90)

**3D: LEBANON VALLEY G CANDY USA000003046342**

Appraisal: 92 @ 11-04 (91/90)  
3-02 365D 2X 22067M 5.4% 1181F 3.3% 739P DHIA  
2405D 115874M 5.1% 5911F 3.4% 3979P LIFE

**4D: LEBANON VALLEY SUPREME KATIE USA000003023403**

Appraisal: 93 @ 11-01 (93/90)  
5-04 305D 3X 23700M 4.0% 943F 3.3% 782P DHIR  
2509D 128950M 4.6% 5911F 3.3% 4266P LIFE

**5D: LEBANON VALLEY SUPER KRUNCH USA000002986934**

Appraisal: 91 @ 8-06  
8-05 365D 3X 22540M 4.2% 944F 3.3% 754P DHIA  
2279D 107080M 4.5% 480F LIFE



**Knapps Her Brook Drone Turbo-ETV VG-85**  
 Proj. 2-00 305D 3X 19,931M 5.0% 993F 3.2% 640P  
 1st Spring Calf Guernsey Gold Showcase 2023  
 Dam of Lot 19

**Knapps Fame Tomorrow-ET EX-94**  
 136,420M 5.1% 6,911F 3.7% 5,113P Lifetime  
 HM Junior All-American Sr. Three-Year-Old 2015  
 Granddam of Lot 19; Mat. Sister to Dam of Lots 20 & 21

**LOT 19 3 #1 OTHELLO X TURBO IVF EMBRYOS**

Consignor: TAYLOR GLENN A & SHERYL  
 CASSVILLE NY  
 315-292-4230 twfarm.sheryl@gmail.com

- Three (3) #1 IVF embryos
- Sexed semen used for females
- Located at Vytelle, OH
- Embryos must be in buyer's possession within 60 days of sale

PA: +206M +0.03% +15F -0.01% +6P +191CM\$ +194NM\$  
 +0.6PTAT +0.8UDC +0.6FLC +0.0DPR +3.0PL +42CPI 3.15SCS

**UP THE CREEK LONDON AUDREY 840003210758207 6GU122 A2A2**

**DAIRYMAN AUDREY OTHELLO-ET 840003240506930 551GU918 A2A2**

08/25 USDA GPTA +397M +0.10% +36F +0.01% +16P  
 +2.0DPR +5.2PL +491NM\$ 99NM%ile +497CM\$ 56% Rel  
 3.01SCS 0.70HCR 30% Rel 3.20CCR 31% Rel  
 2.50LIV 30% Rel 0.00GL 39% Rel -2.20EFC 28% Rel  
 AGA 08/25 PTAT +0.3 +0.5UDC +0.1FLC 55%Rel PTI +83

**JENS GOLD LOGO OPAL 840003128753786 A2A2**

Appraisal: EX 90 @ 6-06 (EEVVE) 2E Gold Star Dam - 2023  
 5-09 365D 3X 25580M 4.9% 1260F 3.5% 893P DHIA

**HI GUERN VIEW LEVI DRONE USA000097004646 94GU959 A2A2**

**KNAPPS HER BROOK DRONE TURBO-ETV 840003236792594**

08/25 USDA GPTA +15M -0.04% -7F -0.03% -5P  
 -2.0DPR +0.8PL -103NM\$ 16NM%ile -116CM\$ 68% Rel  
 3.28SCS-1.80HCR 34% Rel -2.70CCR 41% Rel  
 -0.30LIV 34% Rel 0.60GL 44% Rel -2.50EFC 36% Rel  
 1 Rec YDev: +1353M +74F +31P  
 0 App 08/25 PTAT +0.8 +1.0UDR +1.1FLC 61%Rel CPI +1  
 Appraisal: VG 85 @ 2-07 (VV+VV)  
 2-00 305D 3X 19931M 5.0% 993F 3.2% 640P Proj. Act.  
 1st Spring Calf Guernsey Gold Showcase 2023

**KNAPPS FAME TOMORROW-ET USA000068047818**

Appraisal: 94 @ 6-01 (94/95)  
 2-01 333D 2X 15500M 5.1% 798F 3.5% 547P 95  
 3-01 365D 2X 20140M 5.1% 1024F 3.3% 664P DHIA  
 4-05 365D 2X 26950M 4.9% 1333F 3.7% 991P DHIA  
 5-10 365D 2X 21680M 5.1% 1116F 3.8% 821P DHIA  
 7-09 365D 2X 20730M 4.7% 979F 3.8% 784P DHIA  
 2539D 136420M 5.1% 6911F 3.7% 5113P LIFE  
 Honorable Mention Junior All-American Sr. Three-Year-Old 2015  
 Member, All-American Exhibitor's Herd 2015  
 Dtrs: KNAPPS A PIE TODAY 89 @ 3-00 (91/90)  
 2-00 365D 2X 28750M 4.3% 1236F 3.5% 1006P DHIA  
 All-American Winter Yearling 2016  
 KNAPPS DRONE TONNYLOU 83 @ 2-02 (81/83)  
 Junior Champion Spring Dairy Expo 2023  
 KNAPPS DRONE WS TORNADO-ET 87 @ 2-07 (85/88)  
 Reserve Junior Champion Spring Dairy Expo 2023

**3D: KNAPPS ACE TAMERA USA000068006299**

Appraisal: 93 @ 9-07 (91/92)  
 9-07 365D 2X 32350M 4.2% 1351F 3.2% 1036P DHIA  
 3038D 178720M 4.4% 7847F 3.4% 6004P LIFE  
 24 Excellent Daughters

**4D: SUNRISE LUXURY TAMI USA000003068188**

Appraisal: 93 @ 5-04 (92/92)  
 3-10 365D 2X 28480M 4.2% 1198F 3.2% 907P DHIA  
 2395D 151070M 4.0% 6087F 3.2% 4888P LIFE



**Knapps Regis Tambourine-ET EX-95**  
 190,040M 7.5% 14,236F 5.0% 9,483P Life  
 Unanimous All-American Aged Cow 2015  
 Full Sister to Dam of Lots 20 & 21



**Knapps Toolite Regis Trista-ET EX-94**  
 5-02 365D 2X 29,230M 4.6% 1,359F 3.4% 989P  
 Three-Time All-American Nominee  
 Full Sister to Dam of Lots 20 & 21

**LOT 20 5 #1 AMERICAN PIE X TASTLE IVF EMBRYOS**

Consignor: GROSS ROBERT & HALEY  
 CALDWELL ID  
 760-518-9756 haley\_gross@ymail.com

- Five (5) #1 IVF embryos
- Reverse sorted semen used for females
- Located at TransOva, ID
- Embryos must be in buyer's possession within 60 days of sale

**INDIAN ACRES AMERICAN PIE USA000068016348 31GU618 A2A2**

08/25 USDA GPTA +67M -0.18% -27F -0.04% -5P  
 -2.0DPR +2.9PL -88NM\$ 19NM%ile -93CM\$ 98% Rel  
 2.76SCS -3.30HCR 71% Rel -2.60CCR 91% Rel  
 -0.10LIV 77% Rel 0.80GL 98% Rel -7.20EFC 81% Rel  
 AGA 08/25 PTAT -0.2 +0.0UDC +0.5FLC 98%Rel PTI -33

**IDLE GOLD E CHALLENGE-ET USA000000604268 1GU418 A2A2**

**INDIAN ACRES MM PISTACHIO PIE USA000003076310**

Appraisal: 94 @ 5-00 (95/90)  
 4-10 365D 2X 26187M 5.1% 1330F 3.6% 939P 99

**KNAPPS REGIS TASTLE-ETV USA000097003788 A1A2**

08/25 USDA PTA +195M -0.14% -15F -0.04% +0P  
 +0.2DPR +0.4PL -65NM\$ 24NM%ile -70CM\$ 54% Rel  
 2.82SCS-0.40HCR 25% Rel -0.60CCR 40% Rel  
 -0.90LIV 33% Rel 1.30GL 39% Rel -0.80EFC 33% Rel  
 1 Rec YDev: +2148M +8F +47P  
 2-04 325D 2X 20210M 4.4% 893F 3.4% 678P 95

**MARODORE ENHANCER REGIS-ET USA000000603223 14GU280**

**KNAPPS ACE TAMERA USA000068006299**

Appraisal: 93 @ 9-07 (91/92)  
 2-07 365D 2X 19960M 4.7% 935F 3.4% 670P DHIA  
 3-08 365D 2X 24510M 4.3% 1044F 3.2% 786P DHIA  
 5-06 365D 2X 24830M 4.6% 1146F 3.3% 809P DHIA  
 9-07 365D 2X 32350M 4.2% 1351F 3.2% 1036P DHIA  
 3038D 178720M 4.4% 7847F 3.4% 6004P LIFE  
 24 Excellent Daughters

**LOT 21 5 #1 MCDREAMY X TASTLE IVF EMBRYOS**

Consignor: GROSS ROBERT & HALEY  
 CALDWELL ID  
 760-518-9756 haley\_gross@ymail.com

- Five (5) #1 IVF embryos
- Embryos not sexed
- Located at TransOva, ID
- Embryos must be in buyer's possession within 60 days of sale

**VALLEY GEM RICHARD MCDREAMY-ETV USA000097013125 6GU131 A2A2**

08/25 USDA GPTA +57M +0.05% +11F +0.07% +14P  
 +0.9DPR +2.5PL +215NM\$ 66NM%ile +235CM\$ 62% Rel  
 2.91SCS +3.1SCR 1.00HCR 31% Rel 1.50CCR 35% Rel  
 0.30LIV 30% Rel -0.10GL 39% Rel 4.70EFC 31% Rel  
 AGA 08/25 PTAT +0.7 +1.2UDC +0.5FLC 61%Rel PTI +60

**DAIRYMAN LEGEND RICHARD 840003009973860 49GU143 A2A2**

**VALLEY GEM ATLAS MALT-ET USA000078005539 A2A2**

Appraisal: EX 97 @ 8-08 (EEEEEE)  
 4-02 305D 2X 26750M 5.5% 1482F 3.3% 889P 96

**KNAPPS REGIS TASTLE-ETV USA000097003788 A1A2**

08/25 USDA PTA +195M -0.14% -15F -0.04% +0P  
 +0.2DPR +0.4PL -65NM\$ 24NM%ile -70CM\$ 54% Rel  
 2.82SCS-0.40HCR 25% Rel -0.60CCR 40% Rel  
 -0.90LIV 33% Rel 1.30GL 39% Rel -0.80EFC 33% Rel  
 1 Rec YDev: +2148M +8F +47P  
 2-04 325D 2X 20210M 4.4% 893F 3.4% 678P 95

**MARODORE ENHANCER REGIS-ET USA000000603223 14GU280**

**KNAPPS ACE TAMERA USA000068006299**

Appraisal: 93 @ 9-07 (91/92)  
 2-07 365D 2X 19960M 4.7% 935F 3.4% 670P DHIA  
 3-08 365D 2X 24510M 4.3% 1044F 3.2% 786P DHIA  
 5-06 365D 2X 24830M 4.6% 1146F 3.3% 809P DHIA  
 9-07 365D 2X 32350M 4.2% 1351F 3.2% 1036P DHIA  
 3038D 178720M 4.4% 7847F 3.4% 6004P LIFE  
 24 Excellent Daughters



**Rolling Prairie Bella Blue EX-95**

148,570M 4.2% 6,172F 3.2% 4,787P Lifetime  
 Dam of Brogdon, Bigboy & Baxter  
 Dam of Lot 22



**Dairyman Mint 3371 Blizzard-TW VG-87**

120,190M 5.0% 5,967F 3.7% 4,480P Lifetime  
 Maternal Sister to Lot 22

**LOT 22 5 #1 CONVENTIONAL EMBRYOS: 2 MINT & 3 CHALLENGE X BELLA BLUE**

Consignor: HOARDS DAIRYMAN FARM  
 FORT ATKINSON WI  
 920-728-4822 hdfarm@hoards.com

- Five (5) total #1 conventional embryos
- Two sired by Mint & three sired by Challenge
- Embryos are not sexed
- Located at Sunshine Genetics, WI
- Embryos must be in buyer's possession within 60 days of sale

**Sire one:**

**SPRING WALK SHERBERTS MINT USA000068017224 7GU434 A2A2**

08/25 USDA GPTA +12M +0.04% +8F +0.08% +14P  
 +0.6DPR +1.6PL +267NM\$ 85NM%ile +291CM\$ 96% Rel  
 2.76SCS -0.40HCR 63% Rel 2.40CCR 85% Rel  
 -0.80LIV 67% Rel -0.70GL 97% Rel 0.20EFC 69% Rel  
 AGA 08/25 PTAT -0.1 -0.1UDC -0.2FLC 95%Rel PTI +25

**Sire two:**

**IDLE GOLD E CHALLENGE-ET USA000000604268 1GU418 A2A2**

08/25 USDA GPTA -636M +0.18% +0F +0.10% -5P  
 +1.5DPR +0.3PL +124NM\$ 47NM%ile +147CM\$ 98% Rel  
 2.88SCS -2.60HCR 81% Rel 2.40CCR 95% Rel  
 -0.90LIV 86% Rel -0.10GL 99% Rel -5.90EFC 88% Rel  
 AGA 08/25 PTAT -0.6 -0.6UDC +0.3FLC 99%Rel PTI -12

**ROLLING PRAIRIE BELLA BLUE USA000068018452**

08/25 USDA GPTA +609M -0.29% -23F -0.12% -1P  
 +1.6DPR +0.2PL -44NM\$ 28NM%ile -65CM\$ 80% Rel  
 2.72SCS -1.80HCR 39% Rel 1.90CCR 57% Rel  
 0.20LIV 38% Rel 1.00GL 60% Rel -7.30EFC 39% Rel  
 5 Rec YDev: +2673M -4F +31P  
 5 App 08/25 PTAT +0.3 +0.3UDR -0.9FLC 83%Rel CPI -20  
 Appraisal: 95 @ 6-11 (95/92)  
 2-02 305D 3X 21840M 4.4% 952F 3.0% 649P 92  
 3-01 300D 3X 22470M 4.8% 1080F 3.4% 760P 94  
 4-01 303D 3X 31370M 4.1% 1274F 3.2% 1000P 94  
 5-01 365D 3X 34350M 4.0% 1385F 3.3% 1141P DHIA  
 6-04 365D 3X 35360M 3.8% 1355F 3.2% 1117P DHIA  
 1703D 148570M 4.2% 6172F 3.2% 4787P LIFE

**Dam of BROGDON, BIGBOY & BAXTER**

Dtrs: ROLLING PRAIRIE BLUE BAYOU 90 @ 4-07 (87/91)  
 4-04 365D 2X 23330M 4.7% 1095F 3.6% 845P DHIA  
 DAIRYMAN NACHO BLUES 84 @ 2-09 (86/82)  
 2-02 273D 3X 18400M 4.3% 798F 3.2% 589P 87  
 DAIRYMAN V I P 2359 BIRDIE 84 @ 5-00 (90/78)  
 3-03 298D 3X 25490M 3.9% 987F 3.2% 807P 94  
 DAIRYMAN MINT 3371 BLIZZARD-TW 87 @ 5-06 (87/87)  
 6-01 347D 3X 24010M 5.0% 1199F 3.8% 914P 104  
 DAIRYMAN PHONZE 3529 BLUEJEANS-ET 83 @ 3-10 (83/83)  
 2-10 365D 3X 25520M 4.3% 1088F 3.4% 867P DHIA  
 DAIRYMAN BEAU 4003 BLUEGRASS-ET 86 @ 5-00 (83/87)  
 2-01 365D 3X 28870M 4.1% 1198F 3.0% 877P DHIA  
 DAIRYMAN RANDALL 4242 BLUEPRINT-ET 88 @ 5-01 (87/88)  
 3-10 316D 3X 19300M 5.3% 1016F 4.0% 767P 103  
 DAIRYMAN PHANTASTIC 4622 BLUEBELL-ET 85 @ 2-11 (79/88)  
 1-11 305D 3X 21410M 4.3% 926F 3.1% 658P 101

**ROLLING PRAIRIE MAXIE PISTOL USA000068007819**

**ROLLING PRAIRIE HICKORY BELLA USA000068007815**

Appraisal: 72 @ 3-07 (68/76)  
 2-00 365D 2X 17360M 4.0% 702F 3.2% 555P DHIA  
 3-06 365D 2X 18870M 4.1% 779F 3.2% 607P DHIA



**Rolling Prairie Blue Bayou EX-90**

4-04 365D 2X 23,330M 4.7% 1,095F 3.6% 845P  
 Maternal Sister to Lot 22



**Dairyman Copper 3443 Jiggles EX-90 GSD**  
 5-10 339D 3X 20,810M 5.6% 1,165F 3.8% 783P  
 #33(T) CPI Cow August 2024  
 Dam of Lot 23

**Dairyman Profit 3825 Japan EX-90 GSD**  
 4-03 365D 3X 23,870M 5.5% 1,315F 3.6% 868P  
 Dam of Jrue, Jethro, Jed & Jumpstart  
 Maternal Sister to Dam of Lot 23

**LOT 23 4 JAVA-P X JIGGLES IVF EMBRYOS (2 #1 & 2 #2)**

Consignor: HOARDS DAIRYMAN FARM  
 FORT ATKINSON WI  
 920-728-4822 hdfarm@hoards.com

PA: -136M +0.07% +4F +0.02% -2P +60CM\$ +54NM\$  
 +1.1PTAT +1.8UDC +0.8FLC -0.3DPR +1.8PL +37CPI 2.85SCS

- Two (2) #1 and two (2) #2 IVF embryos
- Reverse sorted semen used for Females
- Resulting calves will be A2A2 by parentage
- Resulting calves have 50% chance of being Naturally Polled
- Located at Sunshine Genetics, WI
- Embryos must be in buyer's possession within 60 days of sale

**SPRINGHILL JAVA-ETV-P 840003151591431 200GU123 A2A2**

08/25 USDA GPTA -68M -0.06% -14F +0.00% -3P  
 -2.7DPR -0.7PL -221NM\$ 0NM%ile -219CM\$ 86% Rel  
 2.85SCS -2.60HCR 42% Rel -3.90CCR 51% Rel  
 -2.00LIV 32% Rel 0.60GL 88% Rel -4.10EFC 40% Rel  
 AGA 08/25 PTAT +1.3 +1.6UDC +1.5FLC 84%Rel PTI +1

**IDLE GOLD A HERALD-P USA000097002947 54GU499 A2A2**

**SPRINGHILL MENTOR JAZZY-ET USA000068031553 A2A2**

Appraisal: EX 95 @ 6-09 (EEEE)  
 4-06 365D 2X 34720M 5.2% 1799F 3.6% 1260P\* DHIA

**DAIRYMAN COPPER 3443 JIGGLES 840003134202043 A2A2**

08/25 USDA GPTA -203M +0.19% +22F +0.04% -1P  
 +2.2DPR +4.3PL +328NM\$ 93NM%ile +339CM\$ 74% Rel  
 2.80SCS 2.20HCR 36% Rel 3.10CCR 42% Rel  
 1.90LIV 37% Rel -0.10GL 43% Rel 4.90EFC 38% Rel  
 5 Rec YDev: -368M +52F +0P  
 4 App 08/25 PTAT +0.8 +1.9UDR +0.1FLC 77%Rel CPI +73  
 Appraisal: EX 90 @ 6-05 (EEVEE) 2E Gold Star Dam - 2022  
 2-01 365D 3X 18660M 6.1% 1134F 3.8% 707P DHIA  
 3-09 332D 3X 19620M 5.9% 1148F 3.8% 736P 104  
 4-09 338D 3X 20800M 5.8% 1196F 3.6% 759P 104  
 5-10 339D 3X 20810M 5.6% 1165F 3.8% 783P 104  
 7-00 365D 2X 19100M 5.5% 1058F 3.8% 733P DHIA  
 1883D 104020M 5.8% 5999F 3.8% 3930P LIFE

#44(T) CPI Cow August 2025

Dtrs: DAIRYMAN JAEGER 4332 JOELLE 83 @ 5-02 (85/82)

3-07 312D 3X 21880M 5.5% 1200F 3.8% 825P DHIA

DAIRYMAN RICHARD 4877 JUDY 85 @ 4-04 (87/82)

2-10 352D 3X 19990M 5.1% 1016F 3.7% 745P 104

#44(T) CPI Cow August 2025

DAIRYMAN AUDREY 5424 JUJY-ET 83 @ 2-03 (83/80)

**JENS GOLD AARON COPPER-ET USA000068027038 14GU318 A2A2**

**DAIRYMAN V I P 2512 JAZZER 840003124608098 A2A2**

Appraisal: + 81 @ 5-10 (V+VF+) Gold Star Dam - 2018

1-08 290D 3X 16890M 5.2% 877F 3.9% 667P 93

2-07 295D 3X 22770M 5.0% 1131F 3.8% 869P 94

3-07 365D 3X 28060M 5.4% 1523F 3.9% 1101P DHIA

5-02 318D 2X 18170M 5.7% 1032F 4.0% 718P DHIA

6-03 328D 3X 23470M 6.2% 1463F 3.8% 893P 104

1602D 109570M 5.5% 6041F 3.9% 4257P LIFE

Dtrs: DAIRYMAN PROFIT 3825 JAPAN 90 @ 5-06 (90/90)

Gold Star Dam - 2023

4-03 365D 3X 23870M 5.5% 1315F 3.6% 868P DHIA

Dam of JRUE, JETHRO, JED & JUMPSTART

DAIRYMAN CRAIG 4822 JAZZY 84 @ 4-06 (84/80)

3-10 347D 3X 21650M 6.0% 1298F 4.0% 856P 104

#152(T) CPI Cow August 2025

**3D: DAIRYMAN ALSTAR JAZLYN USA000070781141**

Appraisal: 85 @ 3-01 (85/85)

1-08 365D 3X 22260M 4.8% 1058F 3.6% 811P DHIA

**4D: GR-DAIRYMAN BINGO JAZZ USA000064739061**

Appraisal: 83 @ 3-04 (82/87)

2-00 315D 3X 19840M 5.2% 1036F 3.8% 759P 93

**5D: PR-STOCKWELL FARM JANE USA000068004670**

Appraisal: 84 @ 5-00 (80/88)

7-00 304D 3X 27760M 4.6% 1270F 3.5% 975P DHIA



**Dairyman Cordell Phanny EX-90**  
 3-06 365D 24,560M 6.1% 1,509F 3.8% 937P  
 Dam of Phantastic & Pharmer at GGS  
 Dam of Lots 24 - 26

**LOT 24 4 #1 CHARMING X PHANNY CONVENTIONAL EMBRYOS**

Consignor: HOARDS DAIRYMAN FARM  
 FORT ATKINSON WI  
 920-728-4822 hdfarm@hoards.com

PA: -292M +0.08% +0F +0.06% -1P +70CM\$ +58NM\$  
 -0.2PTAT +0.1UDC -0.8FLC +0.5DPR +0.8PL -1CPI 2.96SCS

- Four (4) #1 conventional embryos
- Embryos are not sexed
- Located at Sunshine Genetics, WI
- Embryos must be in buyer's possession within 60 days of sale

**WALNUT RIDGE PRINCE CHARMING USA000097001421 7GU472 A2A2**

08/25 USDA GPTA -374M +0.11% +1F +0.06% -3P  
 +1.3DPR +0.3PL +81NM\$ 47NM%ile +97CM\$ 94% Rel  
 2.77SCS 1.50HCR 59% Rel 2.10CCR 76% Rel  
 3.40LIV 51% Rel 1.40GL 97% Rel 0.90EFC 57% Rel  
 AGA 08/25 PTAT -0.2 +0.5UDC -0.7FLC 94%Rel PTI +12

**LINDRIAN GRUMPY PILOT-ET CAN000011632409 200GU307 A2A2**

**WALNUT RIDGE YOGI CHERISH-ET USA000068049935**

Appraisal: 87 @ 3-07 (88/83)  
 3-04 332D 2X 27940M 6.4% 1798F 3.2% 897P 97

**DAIRYMAN CORDELL PHANNY USA000070781164**

08/25 USDA GPTA -210M +0.05% -1F +0.05% +1P  
 -0.4DPR +1.3PL +35NM\$ 45NM%ile +42CM\$ 85% Rel  
 3.14SCS-0.40HCR 49% Rel -0.80CCR 62% Rel  
 -0.90LIV 42% Rel 0.60GL 69% Rel 1.30EFC 48% Rel  
 2 Rec YDev: -129M +74F +39P  
 4 App 08/25 PTAT -0.2 -0.3UDR -0.8FLC 87%Rel CPI -14  
 Appraisal: 90 @ 3-11 (90/90)  
 2-03 365D 3X 24360M 5.5% 1333F 3.8% 929P DHIA  
 3-06 365D 3X 24560M 6.1% 1509F 3.8% 937P DHIA  
 Dam of PHANTASTIC & PHARMER at Guernsey Gold Sires  
 Dtrs: DAIRYMAN LAREDO 2322 PHANTOM 85 @ 6-10 (86/83)  
 4-03 347D 3X 26030M 4.7% 1215F 3.8% 997P 96  
 DAIRYMAN LEGEND 2719 PHOENIX-TW 83 @ 2-07 (83/81)  
 2-01 365D 3X 27510M 4.6% 1256F 3.6% 1003P DHIA  
 DAIRYMAN CHARMING 3892 PHARYNX-ET 85 @ 5-07 (82/86)  
 4-00 362D 3X 25410M 3.9% 993F 3.4% 863P 103  
 DAIRYMAN JORDY 3995 PHUEL-ET 84 @ 5-03 (83/82)  
 4-00 312D 3X 20730M 5.2% 1087F 3.9% 800P 103  
 DAIRYMAN BROGDON 4361 PHIDDLE-ET 86 @ 5-01 (87/81)  
 3-05 336D 3X 20140M 4.6% 917F 3.3% 657P 103  
 DAIRYMAN BEAU 5056 PHESTIVAL-ET 85 @ 3-10 (85/86)  
 DAIRYMAN REGGIE 5076 PHOREST-ET 85 @ 2-11 (85/82)  
 2-01 365D 3X 22460M 3.9% 876F 3.7% 826P DHIA

**RIPLEY FARMS AARON CORDELL USA000068027378 7GU440 A1A2**

**DAIRYMAN SPIDER PHAME-ET USA000063178679**

Appraisal: 88 @ 4-09 (88/86)  
 2-01 365D 3X 22110M 5.4% 1183F 3.7% 818P DHIA  
 3-02 324D 3X 21880M 5.4% 1174F 3.6% 797P DHIA  
 4-06 365D 3X 27990M 5.1% 1432F 3.9% 1081P DHIA  
 Dam of 7GU447 PHONZE  
 Dtrs: DAIRYMAN HP LEGEND PHEATURE-ET 86 @ 4-05 (88/78)  
 2-10 327D 3X 21560M 4.8% 1029F 4.0% 854P 96  
 DAIRYMAN JG CORDELL PHOEBE-ET 90 @ 9-07 (90/86)  
 5-08 365D 3X 25760M 5.6% 1453F 3.9% 1005P DHIA  
 DAIRYMAN CORDELL 4511 PHAMOUS-ET 85 @ 3-03 (85/81)

**3D: MARFRED ENTICER PHOEM USA000003058326**

Appraisal: 90 @ 4-10 (91/86)  
 3-00 304D 2X 18620M 5.4% 1011F 3.6% 670P DHIA  
 Dtr: MARFRED STORMS PHRANCE 90 @ 5-03 (87/88)  
 3-10 365D 2X 26470M 4.7% 1255F 3.1% 825P DHIA

**4D: MARFRED SMOKIN GUN PHOEBE USA000003047175**

Appraisal: 86 @ 7-01 (86/85)  
 4-02 305D 2X 16010M 4.9% 782F 3.7% 597P DHIA



**Dairyman Laredo 2332 Phantom VG-85**  
 4-03 347D 3X 26,030M 4.7% 1,215F 3.8% 997P  
 Maternal Sister to Lots 24 - 26



**Dairyman Reggie 5076 Phorest-ET VG-85**  
 2-01 365D 3X 22,460M 3.9% 876F 3.7% 826P  
 Maternal Sister to Lots 24 - 26

**LOT 25 4 #1 CROWN ROYAL X PHANNY CONVENTIONAL EMBRYOS**

Consignor: HOARDS DAIRYMAN FARM  
 FORT ATKINSON WI  
 920-728-4822 hdfarm@hoards.com

PA: +428M -0.10% +2F -0.02% +12P +62CM\$ +66NM\$  
 -0.4PTAT -0.7UDC -1.1FLC -1.1DPR +0.9PL -12CPI 3.09SCS

**WALNUT RIDGE NOVAK CROWN ROYAL USA000097003242 6GU102 A2A2**

08/25 USDA GPTA +1066M -0.24% +5F -0.08% +22P  
 -1.8DPR +0.4PL +97NM\$ 47NM%ile +82CM\$ 90% Rel  
 3.03SCS -3.60HCR 54% Rel -2.70CCR 64% Rel  
 1.10LIV 41% Rel -0.30GL 95% Rel -5.60EFC 48% Rel  
 AGA 08/25 PTAT -0.6 -1.1UDC -1.3FLC 89%Rel PTI -10

**DAIRYMAN CORDELL PHANNY USA000070781164**

Appraisal: 90 @ 3-11 (90/90)  
 2-03 365D 3X 24360M 5.5% 1333F 3.8% 929P DHIA  
 3-06 365D 3X 24560M 6.1% 1509F 3.8% 937P DHIA  
 Dam of PHANTASTIC & PHARMER at Guernsey Gold Sires

- Four (4) #1 conventional embryos
- Embryos are not sexed
- Located at Sunshine Genetics, WI
- Embryos must be in buyer's possession within 60 days of sale

**LANG HAVEN GRUMPY NOVAK USA000068042542 7GU446 A2A2**

**WALNUT RIDGE CASANOVA CHARDONA USA000068048809 A2A2**

Appraisal: VG 87 @ 5-08 (VE++V)  
 4-04 365D 2X 29500M 5.9% 1733F 3.0% 888P 96

**RIPLEY FARMS AARON CORDELL USA000068027378 7GU440 A1A2**

**DAIRYMAN SPIDER PHAME-ET USA000063178679**

Appraisal: 88 @ 4-09 (88/86)  
 2-01 365D 3X 22110M 5.4% 1183F 3.7% 818P DHIA  
 3-02 324D 3X 21880M 5.4% 1174F 3.6% 797P DHIA  
 4-06 365D 3X 27990M 5.1% 1432F 3.9% 1081P DHIA  
 Dam of 7GU447 PHONZE

**LOT 26 4 #1 POPEYE X PHANNY CONVENTIONAL EMBRYOS**

Consignor: HOARDS DAIRYMAN FARM  
 FORT ATKINSON WI  
 920-728-4822 hdfarm@hoards.com

PA: +98M +0.00% +5F -0.01% +2P +36CM\$ +41NM\$  
 +0.2PTAT +0.2UDC -0.4FLC -0.8DPR +0.3PL -3CPI 3.14SCS

**BLA ARL NOVAK POPEYE-TW 840003128910114 6GU103 A2A2**

08/25 USDA GPTA +405M -0.05% +10F -0.06% +3P  
 -1.2DPR -0.7PL +46NM\$ 47NM%ile +30CM\$ 82% Rel  
 3.14SCS -1.60HCR 44% Rel -2.40CCR 54% Rel  
 -1.10LIV 38% Rel 2.30GL 93% Rel 2.90EFC 43% Rel  
 AGA 08/25 PTAT +0.5 +0.6UDC +0.0FLC 80%Rel PTI +8

**DAIRYMAN CORDELL PHANNY USA000070781164**

Appraisal: 90 @ 3-11 (90/90)  
 2-03 365D 3X 24360M 5.5% 1333F 3.8% 929P DHIA  
 3-06 365D 3X 24560M 6.1% 1509F 3.8% 937P DHIA  
 Dam of PHANTASTIC & PHARMER at Guernsey Gold Sires

- Four (4) #1 conventional embryos
- Embryos are not sexed
- Located at Sunshine Genetics, WI
- Embryos must be in buyer's possession within 60 days of sale

**LANG HAVEN GRUMPY NOVAK USA000068042542 7GU446 A2A2**

**BLA ARL AARONS POPCORN USA000068031574**

Appraisal: 90 @ 4-04 (91/90)  
 6-00 365D 2X 23620M 4.3% 1007F 3.2% 751P DHIA

**RIPLEY FARMS AARON CORDELL USA000068027378 7GU440 A1A2**

**DAIRYMAN SPIDER PHAME-ET USA000063178679**

Appraisal: 88 @ 4-09 (88/86)  
 2-01 365D 3X 22110M 5.4% 1183F 3.7% 818P DHIA  
 3-02 324D 3X 21880M 5.4% 1174F 3.6% 797P DHIA  
 4-06 365D 3X 27990M 5.1% 1432F 3.9% 1081P DHIA  
 Dam of 7GU447 PHONZE



**Dairyman Cordell Natalie EX-90 92MS**

3-08 365D 3X 26,010M 5.3% 1,376F 4.0% 1,031P  
Dam of 49GU233 Neptune  
Dam of Lot 27



**Dairyman Beaver 4589 Norda-ET VG-85**

2-03 365D 2X 25,330M 4.1% 1,048F 3.1% 791P  
Junior All-American Winter Calf 2020  
Maternal Sister to Lot 27

**LOT 27 4 #1 CHARMING X NATALIE CONVENTIONAL EMBRYOS**

Consignor: HOARDS DAIRYMAN FARM  
FORT ATKINSON WI  
920-728-4822 hdfarm@hoards.com

PA: -292M +0.08% -1F +0.07% +2P +38CM\$ +23NM\$  
-0.1PTAT +0.5UDC -0.8FLC +1.3DPR +0.5PL +11CPI 2.97SCS

**WALNUT RIDGE PRINCE CHARMING USA000097001421 7GU472 A2A2**

08/25 USDA GPTA -374M +0.11% +1F +0.06% -3P  
+1.3DPR +0.3PL +81NM\$ 47NM%ile +97CM\$ 94% Rel  
2.77SCS 1.50HCR 59% Rel 2.10CCR 76% Rel  
3.40LIV 51% Rel 1.40GL 97% Rel 0.90EFC 57% Rel  
AGA 08/25 PTAT -0.2 +0.5UDC -0.7FLC 94%Rel PTI +12

**DAIRYMAN CORDELL NATALIE USA000069706757**

08/25 USDA GPTA -209M +0.05% -2F +0.08% +6P  
+1.3DPR +0.6PL -35NM\$ 30NM%ile -21CM\$ 73% Rel  
3.17SCS-0.10HCR 29% Rel 2.20CCR 43% Rel  
-0.50LIV 30% Rel 0.60GL 35% Rel -0.70EFC 32% Rel  
5 Rec YDev: -758M +0F +12P  
5 App 08/25 PTAT +0.0 +0.4UDR -0.9FLC 75%Rel CPI +10  
Appraisal: 90 @ 3-09 (92/86)  
1-09 273D 3X 16320M 4.6% 757F 3.5% 564P 91  
2-08 308D 3X 21500M 5.2% 1122F 3.9% 832P 94  
3-08 365D 3X 26010M 5.3% 1376F 4.0% 1031P DHIA  
5-02 343D 3X 21570M 4.9% 1058F 3.9% 833P 90  
Dam of 49GU233 NEPTUNE  
Dtrs: DAIRYMAN CAPTAIN 3223 NEENAH 88 @ 5-10 (85/86)  
4-00 365D 3X 34340M 4.7% 1619F 3.5% 1198P DHIA  
DAIRYMAN BEAVER 4589 NORDA-ET 85 @ 2-10 (83/78)  
2-03 365D 2X 25330M 4.1% 1048F 3.1% 791P DHIA  
Junior All-American & Nom. All-American Winter Calf 2020

- Four (4) #1 conventional embryos
- Embryos are not sexed
- Located at Sunshine Genetics, WI
- Embryos must be in buyer's possession within 60 days of sale

**GOLDEN J RONALD GRUMPY USA00000604960 7GU405 A2A2**

**ROLLING PRAIRIE BELLA BLUE USA000068018452**

Appraisal: 95 @ 6-11 (95/92)  
5-01 365D 3X 34350M 4.0% 1385F 3.3% 1141P DHIA

**RIPLEY FARMS AARON CORDELL USA000068027378 7GU440 A1A2**

**DAIRYMAN CHALLENGE NILE-ET USA000064220979**

Appraisal: 87 @ 7-11 (83/87)  
2-03 294D 3X 13680M 5.3% 722F 3.7% 504P DHIA  
3-02 281D 3X 17430M 5.1% 886F 3.9% 674P DHIA  
4-01 296D 3X 21780M 4.9% 1070F 3.8% 838P DHIA  
5-01 324D 3X 22740M 5.2% 1186F 3.9% 890P DHIA  
6-03 327D 3X 15390M 5.3% 816F 4.1% 638P DHIA  
7-09 365D 3X 21680M 5.0% 1090F 4.2% 912P DHIA  
1976D 117610M 5.1% 6046F 4.0% 4675P LIFE  
Dtrs: DAIRYMAN RUFFUS NIMBLE 85 @ 4-05 (83/85)  
2-10 284D 3X 20610M 4.7% 967F 3.7% 763P DHIA  
DAIRYMAN YOGIBEAR NICOLET 88 @ 5-03 (83/88)  
3-00 286D 3X 18420M 5.5% 1005F 3.9% 717P 93

**3D: VALLEY SET HANSOM NILA USA000003065329**

Appraisal: 92 @ 5-10 (91/88)  
2-03 305D 3X 18120M 4.2% 758F 3.4% 610P DHIA

**4D: VALLEY SET SABER NINA USA000003053563**

Appraisal: 83 @ 4-01  
3-04 365D 2X 25900M 4.3% 1105F 3.5% 917P DHIA

**5D: VALLEY SET V NAN USA000003001115**

Appraisal: 84 @ 4-08  
5-06 320D 2X 18760M 5.2% 972F 3.2% 601P DHIA  
Dtr: VALLEY SET TONY NELL 91 @ 12-01 (91/91)  
8-02 365D 2X 25250M 4.8% 1219F 3.6% 917P DHIA

**6D: BROOKSIDE NORAS NANCY USA000002881806**

Appraisal: 87 @ 6-02

# LOT 28 3 #1 NEWTON OR CRAIG X HEARTY IVF EMBRYOS

Consignor: HOARDS DAIRYMAN FARM  
FORT ATKINSON WI  
920-728-4822 hdfarm@hoards.com

- Three (3) #1 IVF embryos
- Buyer's choice of either Newton or Craig embryos
- Sexed Craig semen and reverse sorted Newton semen used for females
- Located at Sunshine Genetics, WI
- Embryos must be in buyer's possession within 60 days of sale

## Sire option 1:

### RIPLEY FARMS JAG NEWTON 840003130939306 7GU470 A2A2

08/25 USDA GPTA -187M +0.02% -6F +0.03% -2P  
+2.4DPR +4.2PL +170NM\$ 61NM%ile +176CM\$ 90% Rel  
2.94SCS 1.10HCR 50% Rel 2.60CCR 64% Rel  
2.80LIV 43% Rel 0.30GL 96% Rel 0.90EFC 47% Rel  
AGA 08/25 PTAT +0.1 +1.0UDC -0.1FLC 84%Rel PTI +30

### DAIRYMAN DOUBLE L HEARTY USA000070781214 A1A2

08/25 USDA GPTA +930M -0.12% +22F -0.05% +23P  
+0.9DPR +2.9PL +356NM\$ 94NM%ile +352CM\$ 72% Rel  
2.86SCS-0.30HCR 35% Rel 1.60CCR 41% Rel  
1.70LIV 39% Rel 0.80GL 42% Rel 0.60EFC 37% Rel  
5 Rec YDev: +2977M +89F +74P  
4 App 08/25 PTAT +0.3 -0.3UDR +0.5FLC 75%Rel CPI +59  
Appraisal: EX 91 @ 8-04 (EEFEE)

1-10 365D 3X 22980M 5.1% 1165F 3.6% 819P DHIA  
3-06 324D 3X 30940M 4.8% 1470F 3.5% 1086P 94  
4-06 293D 3X 29960M 4.6% 1372F 3.5% 1057P\* 93  
5-05 324D 3X 33810M 4.7% 1599F 3.5% 1176P 94  
6-06 365D 3X 36200M 4.0% 1431F 3.3% 1208P DHIA  
7-08 299D 2X 22100M 4.3% 960F 3.3% 737P 97  
2048D 179390M 4.6% 8195F 3.5% 6216P LIFE  
Dtrs: RF-DAIRYMAN 2777 85 @ 5-01 (85/86)  
4-09 365D 3X 25840M 5.1% 1319F 3.8% 982P DHIA  
DAIRYMAN SNOWMAN HONEY-ET 83 @ 3-06 (78/83)  
2-10 288D 3X 20050M 2.9% 591F 3.4% 687P 104  
DAIRYMAN SNOWMAN 5069 HETTIE-ET 81 @ 3-06 (75/84)  
2-10 345D 3X 27710M 2.8% 765F 3.4% 946P 104

## Sire option 2:

### DAIRYMAN CHARMING CRAIG 840003200731886 6GU111 A2A2

08/25 USDA GPTA -673M +0.11% -13F +0.04% -16P  
+1.5DPR +1.4PL +21NM\$ 42NM%ile +27CM\$ 90% Rel  
3.02SCS 0.50HCR 50% Rel 2.20CCR 60% Rel  
3.80LIV 37% Rel 1.50GL 96% Rel 1.90EFC 46% Rel  
AGA 08/25 PTAT +0.2 +1.8UDC -0.8FLC 91%Rel PTI +3

### PINE RIDGE DOUBLE L-ET USA000000604312 200GU109 A1A2

### WAGNERS LEWIS HAPPY USA000068020999

Appraisal: 85 @ 3-00 (85/82)  
2-05 282D 3X 18240M 4.8% 874F 3.3% 610P 90  
3-06 252D 3X 20950M 5.1% 1061F 3.5% 736P 90



## FOR SEMEN LOTS IN THE GMS TANK

Pick up at the Autumn Opportunity Sale or NAILE in Louisville! Contact Robin to arrange:  
614-339-5390 ralden@usguernsey.com

**AUTUMN OPPORTUNITY SALE**  
OCT. 31 2025  
RONKS, PENNSYLVANIA  
FISHER'S QUALITY DAIRY SALES  
RONKS, PA | OCTOBER 31ST, 11:00 AM  
**SELLING 50+ HEAD OF A2A2 REGISTERED GUERNSEYS**  
GUERNSEY MARKETING SERVICE  
ROBIN ALDEN: 614.339.5390



**Femara Caden Alyse-ET EX-92 2E**

126,143M 4.9% 6,200F 3.4% 4,316P Lifetime  
Res. Senior Champion Guernsey Gold Showcase 2025  
Dam of Lot 56



**Sniders Yogi Anise-ET EX-94**

111,330M 5.6% 6,210F 3.3% 3,683P Lifetime  
Reserve All-American Sr. Two-Year-Old 2012  
Granddam of Lot 56

**LOT 56 4 #1 LEGACY X ALYSE IVF EMBRYOS**

Consignor: WHEELER, BENJAMIN + ERIN AND HOWACRES  
MARIETTA NY  
315.744.6196 erin.wheeler11@yahoo.com

PA: -71M +0.03% +2F +0.01% -1P +73CM\$ +69NM\$  
+1.4PTAT +2.8UDC +1.5FLC -0.2DPR +2.4PL +58CPI 2.92SCS

- Four (4) #1 IVF embryos
- Sexed semen used for females
- Resulting calves will be A2A2 by parentage
- Resulting calves would rank in the top 200 CPI Heifers - August 2025
- Located at Boviteq, NY
- Embryos must be in buyer's possession within 60 days of sale

**KADENCE JAVA LEGACY USA000097015725 788GU13 A2A2**

08/25 USDA GPTA +260M -0.05% +3F -0.02% +6P  
-2.6DPR +0.0PL -90NM\$ 19NM%ile -92CM\$ 60% Rel  
2.98SCS -2.60HCR 29% Rel -4.30CCR 34% Rel  
-1.80LIV 28% Rel 0.70GL 41% Rel -3.30EFC 30% Rel  
AGA 08/25 PTAT +1.5 +2.1UDC +2.3FLC 60%Rel PTI +44

**SPRINGHILL JAVA-ETV-P 840003151591431 200GU123 A2A2**

**KADENCE FAMES LOVELY USA000097003682 A2A2**

Appraisal: EX 96 @ 8-00 (EEEE)  
6-02 365D 2X 31030M 5.2% 1604F 3.6% 1129P DHIA

**FEMARA CADEN ALYSE-ET USA000078004145 A2A2**

08/25 USDA GPTA -401M +0.11% +0F +0.04% -7P  
+2.3DPR +4.7PL +227NM\$ 84NM%ile +237CM\$ 72% Rel  
2.86SCS 0.90HCR 29% Rel 2.60CCR 40% Rel  
3.20LIV 32% Rel -0.20GL 46% Rel 0.80EFC 32% Rel  
5 Rec YDev: -159M +12F -3P  
3 App 08/25 PTAT +1.3 +3.4UDR +0.7FLC 73%Rel CPI +71  
Appraisal: EX 92 @ 11-04 (VEVVE) 2E

**RUTTER BROS ATLAS CADEN USA000068043434**

**SNIDERS YOGI ANISE-ET USA000068028544**

Appraisal: 94 @ 7-02 (93/91)  
2-07 365D 2X 22590M 5.1% 1147F 3.1% 701P DHIA  
4-05 365D 2X 28590M 5.5% 1578F 3.1% 877P DHIA  
6-10 365D 2X 28190M 5.7% 1598F 3.4% 950P DHIA  
1687D 111330M 5.6% 6210F 3.3% 3683P LIFE  
Reserve All-American Sr. Two-Year-Old 2012  
Nominated All-American Four-Year-Old 2014  
Dtrs: WARWICK MANOR GRUMPY ALIYAH-ET 92 @ 4-03 (93/91)  
2-03 365D 2X 20960M 4.9% 1026F 3.4% 711P DHIA  
WARWICK MANOR CADEN ANISA-ET 85 @ 4-00 (87/86)  
FEMARA GRUMPY ALI-ET 84 @ 2-08 (83/82)  
FEMARA GRUMPY AYLA-ET 88 @ 7-04 (88/80)  
3-02 325D 2X 20970M 4.3% 911F 3.3% 696P 100  
Reserve Junior Champion New England Classic Jr. Show 2015  
FEMARA LUNA-ET 84 @ 2-09 (83/86)  
2-02 325D 2X 17920M 4.5% 811F 3.1% 560P 97  
WARWICK MANOR GARRETT ASHTON-ET 86 @ 4-04 (85/86)  
4-04 358D 2X 29760M 6.2% 1846F 3.2% 948P DHIA  
FEMARA GG HP KRINGLE ALICIA-ET 87 @ 2-10 (86/87)

2-03 314D 3X 16090M 4.6% 746F 3.3% 530P 98  
3-03 305D 3X 17520M 5.0% 868F 3.4% 602P 100  
4-04 291D 3X 18093M 4.6% 840F 3.4% 613P DHIA  
5-03 339D 3X 20500M 4.8% 988F 3.5% 711P 100  
6-04 311D 3X 15430M 5.5% 841F 3.5% 546P 100  
7-04 305D 3X 17280M 5.0% 870F 3.4% 591P 100  
8-10 319D 3X 12730M 4.9% 622F 3.3% 415P 88  
2393D 126143M 4.9% 6200F 3.4% 4316P LIFE  
Reserve Senior Champion Guernsey Gold Showcase 2025  
1st Five-Year-Old New York State Fair 2019  
1st Four-Year-Old New York State Fair 2018  
1st Sr. Two-Year-Old New York State Fair 2016  
1st Lifetime Production Cow NE Spring Show 2023  
Dtrs: WHEELER ACRES D SALTED CARAMEL 86 @ 3-01 (88/81)  
2-05 309D 3X 17310M 5.1% 877F 3.4% 586P 99  
1st Jr. Three-Year-Old New York State Fair 2024  
#162(T) CPI Cow August 2025  
WHEELER ACRES DRONE LIBERTY 85 @ 2-11 (88/82)

**3D: CEDAR FRINGED ALTANN USA000003045188**

Appraisal: 95 @ 6-11 (95/93) Gold Star Dam - 2001  
6-04 365D 2X 31150M 4.8% 1486F 3.0% 941P 94  
2999D 168160M 4.8% 8035F 3.3% 5522P LIFE  
Dam of Aaron, Alstar, Adacka, Alton, Alvin, Activate & Achieve  
Dam of 16 Excellent Daughters  
All-American & Jr. All-American Four-Year-Old 2000  
Reserve All-American & Jr. All-American Jr. Two-Year-Old 1998  
Junior All-American Five-Year-Old 2001  
Honorable Mention All-American Aged Cow 2002  
Grand Champion NGS-Harrisburg 2001



**Lang Haven Beau Topanga VG-88**

4-01 365D 2X 23,420M 4.4% 1,029F 3.4% 798P  
HM All-American Fall Yearling 2021  
Dam of Lot 57



**Lang Haven Pilot Toronto-TW EX-91**

Dam of TORPEDO at Masterpiece Genetics  
Nominated All-American Four-Year-Old 2021  
Granddam of Lot 57

**LOT 57 5 #1 LEGACY X TOPANGA IVF EMBRYOS**

Consignor: LANGREHR JENNA  
WEST SALEM WI  
608-738-5201 kirstielangrehr@gmail.com

- Five (5) #1 IVF embryos
- Sexed semen used for females
- Located at TransOva, WI
- Embryos must be in buyer's possession within 60 days of sale

PA: +309M -0.03% +9F -0.01% +10P -31CM\$ -31NM\$  
+1.4PTAT +1.4UDC +1.8FLC -2.4DPR +0.3PL +44CPI 3.05SCS

**SPRINGHILL JAVA-ETV-P 840003151591431 200GU123 A2A2**

**KADENCE JAVA LEGACY USA000097015725 788GU13 A2A2**

08/25 USDA GPTA +260M -0.05% +3F -0.02% +6P  
-2.2DPR +0.0PL -90NM\$ 19NM%ile -92CM\$ 60% Rel  
2.98SCS -2.60HCR 29% Rel -4.30CCR 34% Rel  
-1.80LIV 28% Rel 0.70GL 41% Rel -3.30EFC 30% Rel  
AGA 08/25 PTAT +1.5 +2.1UDC +2.3FLC 60%Rel PTI +44

**KADENCE FAMES LOVELY USA000097003682 A2A2**

Appraisal: EX 96 @ 8-00 (EEEEEE)  
6-02 365D 2X 31030M 5.2% 1604F 3.6% 1129P DHIA

**COULEE CREST NOVAK LAMBEAU-ET 840003128910115 7GU473**

**LANG HAVEN BEAU TOPANGA USA000097009109**

08/25 USDA PTA +357M -0.01% +14F +0.01% +14P  
-2.2DPR +0.5PL +29NM\$ 44NM%ile +31CM\$ 48% Rel  
3.12SCS-0.80HCR 22% Rel -2.90CCR 30% Rel  
0.60LIV 20% Rel 2.00GL 34% Rel -0.20EFC 23% Rel  
2 Rec YDev: +2403M +67F +77P  
1 App 08/25 PTAT +1.2 +0.7UDR +1.2FLC 48%Rel CPI +43  
Appraisal: VG 88 @ 2-10 (VE+VV)  
2-04 365D 2X 21350M 4.3% 916F 3.3% 705P DHIA  
4-01 365D 2X 23420M 4.4% 1029F 3.4% 798P DHIA  
Honorable Mention All-American Fall Yearling 2021

**LANG HAVEN PILOT TORONTO-TW USA000097003761**

Appraisal: EX 91 @ 4-09 (EEVEE)  
3-00 365D 2X 13920M 4.8% 663F 3.6% 505P DHIA  
4-05 323D 2X 20700M 4.4% 920F 3.5% 730P 96  
Reserve Junior All-American Fall Yearling 2018  
Nominated All-American Four-Year-Old 2021  
Nominated Junior All-American Sr. Two-Year-Old 2019  
Reserve Grand Champion Wisconsin State Show 2021  
Reserve Junior Champion Wisconsin State Fair 2018  
Dam of TORPEDO at Masterpiece Genetics  
Dtr: LANG HAVEN JCP TOAST-ETV 85 @ 2-07 (83/88)  
Reserve Junior Champion Wisconsin State Fair 2023

**3D: LANG HAVEN PRADA NATALIA-ET USA000068045943**

Appraisal: 90 @ 4-03 (90/88)  
3-09 364D 2X 27480M 5.4% 1477F 3.3% 911P 97  
Honorable Mention Junior All-American Sr. Two-Year-Old 2014  
Reserve Intermediate Champion NJS-Madison 2014

**4D: LANG HAVEN LES NICOLETTE-ET USA000068009177**

Appraisal: 91 @ 5-02 (92/92) Gold Star Dam - 2012  
3-04 365D 2X 34500M 4.5% 1540F 3.2% 1112P DHIA  
1283D 105270M 4.7% 4941F 3.3% 3463P LIFE  
Dam of Nico, Navarro & Navajo  
Dtrs: LANG HAVEN ALSTAR NUANCE 90 @ 5-03 (90/86)  
Gold Star Dam - 2017  
4-07 365D 2X 22660M 5.5% 1242F 3.1% 707P DHIA  
Nominated Junior All-American Fall Calf 2011

**LANG HAVEN PRADA NUGGET-ET 90 @ 8-10 (86/95)**

3-08 328D 2X 20140M 5.6% 1129F 3.6% 717P 98

**5D: LANG HAVEN DECISION NIAGARA-ET USA000003073421**

Appraisal: 85 @ 4-03 (85/74)  
3-03 365D 2X 32820M\*5.1% 1687F\*3.1% 1026P DHIA

**6D: LANG HAVEN PERFECTO NICOLE USA000003021234**

Appraisal: 90 @ 4-03 Gold Star Dam - 1999  
5-03 305D 2X 22490M 4.3% 960F 3.3% 732P DHIA  
1693D 101780M 4.2% 4298F 3.3% 3317P LIFE  
Dtrs: LANG HAVEN FORTRESS NATALIE 91 @ 4-00  
2-08 305D 2X 20130M 4.6% 920F 3.3% 659P DHIA  
LANG HAVEN HOT SHOT NATASHA 90 @ 4-05 (90/85)  
3-07 305D 2X 26630M 4.6% 1236F 3.3% 889P 94

**7D: DAIRYMAN FRANK NORMA USA000002990719**

Appraisal: 87 @ 4-11  
4-10 305D 2X 16820M 3.9% 660F 3.2% 541P DHIA

**8D: DAIRYMAN PATRICIAN NORA USA000002880402**

Appraisal: 90 @ 3-11  
3-02 362D 2X 21250M 4.2% 884F 3.4% 719P DHIA

## SEMEN LOTS

- S29 3 UNITS OF SPRINGHILL JAVA-ETV-P 777GU123 840003151591431 **SEXED** POLLED A2A2  
Consigned by Kadence Farm 608-214-4838 Located at TransOva, WI
- S30 2 UNITS OF DIX-LEE NATE DEREK 554GU504 840003149154016 **SEXED** A2A2  
Consigned by Levi & Carly Plocher 330-446-0411 Located in the GMS tank, Columbus, OH 614-339-5390
- S31 6 UNITS OF MARODORE RANDALLS VENGEANCE 514GU113 97006605 **SEXED** A2A2  
Consigned by Hoard's Dairyman Farm, Fort Atkinson, WI 920-728-4822
- S32 4 UNITS OF MARODORE RANDALLS VENGEANCE 514GU113 97006605 **SEXED** A2A2  
Consigned by Hoard's Dairyman Farm, Fort Atkinson, WI 920-728-4822
- S33 4 UNITS OF MARODORE T LES LIGHTNING-ET 507GU445 68029818 **SEXED** A2A2  
Consigned by Hoard's Dairyman Farm, Fort Atkinson, WI 920-728-4822
- S34 4 UNITS OF MAR RAL TILLER MISSION 507GU423 68005012 **SEXED** A2A2  
Consigned by Levi & Carly Plocher 330-446-0411 Located in the GMS tank, Columbus, OH 614-339-5390
- S35 5 UNITS OF HI GUERN VIEW LEVI DRONE 94GU959 97004646 A2A2  
Consigned by Brad Anderson Gayman, Arpin, WI 712-326-0712
- S36 4 UNITS OF MARODORE ENHANCER REGIS-ET 14GU280 603223  
Consigned by Levi & Carly Plocher 330-446-0411 Located in the GMS tank, Columbus, OH 614-339-5390
- S37 10 UNITS OF JENS GOLD AARON COPPER-ET 14GU318 68027038 A2A2  
Consigned by Hoard's Dairyman Farm 920-728-4822 Located in the GMS tank, Columbus, OH 614-339-5390
- S38 2 UNITS OF MAR RAL ROYAL MENTOR 31GU612 604702 A2A2  
Consigned by Levi & Carly Plocher 330-446-0411 Located in the GMS tank, Columbus, OH 614-339-5390
- S39 10 UNITS OF VILLA CREST MONARCH 31GU616 68007930 A2A2  
Consigned by Levi & Carly Plocher 330-446-0411 Located in the GMS tank, Columbus, OH 614-339-5390
- S40 10 UNITS OF VILLA CREST MONARCH 31GU616 68007930 A2A2  
Consigned by Hoard's Dairyman Farm, Fort Atkinson, WI 920-728-4822
- S41 2 UNITS OF ADAMS CREEK FREEDOM BRETT-ETV 54GU515 97008038 A2A2  
Consigned by Levi & Carly Plocher 330-446-0411 Located in the GMS tank, Columbus, OH 614-339-5390
- S42 5 UNITS OF COULEE CREST CARVER-ET 200GU126 840003214098913 A2A2  
Consigned by Levi & Carly Plocher 330-446-0411 Located in the GMS tank, Columbus, OH 614-339-5390
- S43 10 UNITS OF LANG HAVEN JUDGMENT NET WORTH-ET 14GU331 78006591 A2A2  
Consigned by Hoard's Dairyman Farm, Fort Atkinson, WI 920-728-4822
- S44 10 UNITS OF MARODORE RANDALLS VENGEANCE 6GU113 97006605 A2A2  
Consigned by Hoard's Dairyman Farm, Fort Atkinson, WI 920-728-4822
- S45 7 UNITS OF MARODORE RANDALLS VENGEANCE 6GU113 97006605 A2A2  
Consigned by Guernsey Gold Sires Located in the GMS tank, Columbus, OH 614-339-5390
- S46 1 UNIT OF SPRINGHILL JOKES JAGUAR-ET 7GU458 68031529 A2A2  
Consigned by Levi & Carly Plocher 330-446-0411 Located in the GMS tank, Columbus, OH 614-339-5390
- S47 3 UNITS OF COULEE CREST NOVAK LAMBEAU-ET 7GU473 840003128910115 A2A2  
Consigned by Levi & Carly Plocher 330-446-0411 Located in the GMS tank, Columbus, OH 614-339-5390
- S48 3 UNITS OF WARWICK MANOR BO AXEL 97001046 A2A2  
Consigned by Levi & Carly Plocher 330-446-0411 Located in the GMS tank, Columbus, OH 614-339-5390
- S49 10 UNITS OF INDIAN ACRES PIES PATRIOT-ET 68029883  
Consigned by Guernsey Marketing Service Located in the GMS tank, Columbus, OH 614-339-5390
- S50 3 UNITS OF TRIHAVEN TILLER PRODIGY-ET 68038816  
Consigned by Guernsey Marketing Service Located in the GMS tank, Columbus, OH 614-339-5390
- S51 9 UNITS OF CHUPPS HILLPOINT GDUST KRINGLE-ET 31GU622 68019860 A2A2  
Consigned by Hoard's Dairyman Farm, Fort Atkinson, WI 920-728-4822
- S52 10 UNITS OF TAMARACKS PERFECTOS VALIANT-ET 9GU134 602300  
Consigned by Levi & Carly Plocher 330-446-0411 Located in the GMS tank, Columbus, OH 614-339-5390
- S53 10 UNITS OF MAURANA WIS TELESTAR 29GU796 586731  
Consigned by Levi & Carly Plocher 330-446-0411 Located in the GMS tank, Columbus, OH 614-339-5390
- S54 3 UNITS OF NESLEKCIM FARMS FORESTAR 7GU213 596064  
Consigned by Levi & Carly Plocher 330-446-0411 Located in the GMS tank, Columbus, OH 614-339-5390
- S55 9 UNITS OF DENDELS ORCHARDS CORA HOLLIREX 7GU159 588441  
Consigned by Levi & Carly Plocher 330-446-0411 Located in the GMS tank, Columbus, OH 614-339-5390

# Registering Embryo Calves with the American Guernsey Association

## **New Guernsey Owners**

- Visit [www.usguernsey.com](http://www.usguernsey.com) to learn about membership with the American Guernsey Association. Membership is not required to register calves, but will reduce your registration fees!
- Calf registration can be done online at [www.usguernsey.com](http://www.usguernsey.com) or using paper forms - contact the office if you desire paper forms.
- It is recommended to contact AGA prior to registration to obtain an owner number.

## **Requirements of registration**

- All donor dams **MUST** be DNA tested. For embryos made after May 2017, donor dams must have been genomic tested. Be sure to ask the consignor about the dam's DNA status before submitting registrations.
- As with any calf registration, you must have the complete registration number and name of both the sire and dam of the calf.
- You must specify who the owner is of each calf registered.
- The prefix of the breeder of the calf is required to start its registered name.
- The AGA does not require any veterinary paperwork to be submitted before registration; although AGA reserves the right to request paperwork if deemed necessary.

## **Foreign Registration**

Each country association has its own rules for embryo registration. Buyers should check with their respective association to see what paperwork and DNA requirements need met. Foreign buyers without a home association could be eligible for AGA registration. Contact the office directly to inquire. AGA will not register calves for buyers with a Guernsey registration association within their home country.

